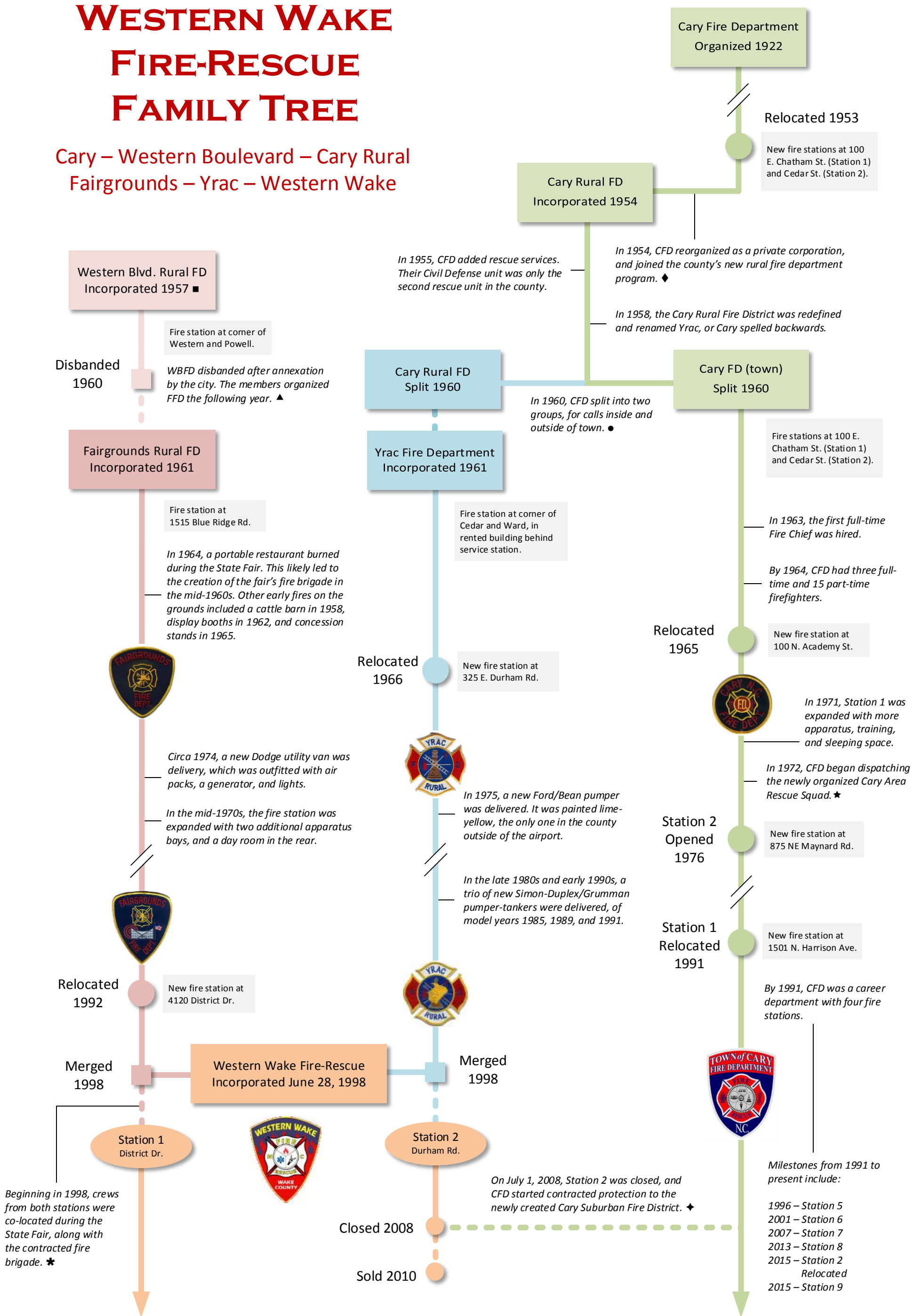


WESTERN WAKE FIRE-RESCUE FAMILY TREE

Cary – Western Boulevard – Cary Rural
Fairgrounds – Yrac – Western Wake



Notations

■ Organized by members of the Western Boulevard Exchange Club, WBFD protected ~1,500 homes and businesses. By the end of 1957, nearly 600 property owners had purchased service subscriptions. The fire station was the corner service station, and then a converted "barbecue shed" on the opposite side of Powell Drive.

▲ On April 1, 1960, the city annexed most of their district, including 600 of 720 subscribers. Raleigh opened a new fire station on Method Road. WBFD disbanded and some of their equipment was disposed to the new Swift Creek FD. In 1961, the WBFD members organized Fairgrounds FD, to protect unincorporated areas around the State Fairgrounds.

★ The State Fair Fire Brigade was a group of off-duty city firefighters contracted annually for fire protection. They utilized borrowed equipment and resided on site. They operated until 2005. By that time, Western Wake was a co-contracted provider, and assumed the sole role in 2006.

♦ Cary's first fire company was organized in 1922 and operated a 1923 chemical car. After the first fire hydrants were installed in town, they received a 1926 Nash pumper.

The fire department was modernized in 1953 with a number of improvements: a new Seagrave pumper, a new fire station at the new Town Hall, and a second fire station in a new storage building nearby. During the 1950s, they added more equipment, joined the county's rural fire department program, and started planning to build a larger fire station.

● In 1960, CRFD was split into two entities, a new CFD serving the town, and the rural fire department serving unincorporated areas. The 24 members were equally split between the two groups. The following year, CRFD was renamed Yrac Rural Fire Department.

★ Organized in 1971, the volunteer Cary Area Rescue Squad operated independent of the fire department. They also provided technical rescue services. In 1997, CFD assumed this role, and the CARS rescue truck was transferred to the fire department.

♦ Western Wake Station 2 was one of several county-funded fire stations evaluated for closure, after recommendations of a 2004 fire station and equipment study. The report recommended that nearby municipal fire departments instead serve those service areas, with an expected savings in operational costs. Station 2 was closed in 2008. Two years later, the process was suspended and no further fire stations were evaluated for closure.