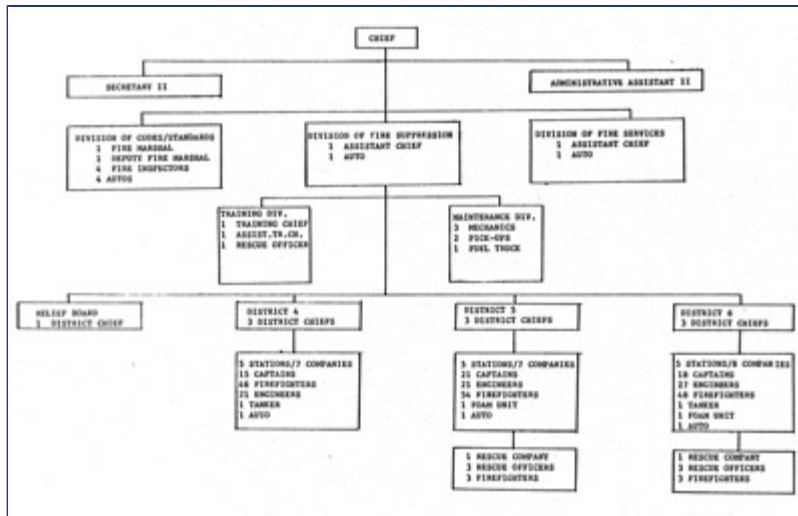


Raleigh Fire Department Org Chart, 1980

12/13/12 165 W, 1 I - + 9 - 4

Here's your morning historical artifact, from the Fiscal Year 1980-81 budget document. Note that some vehicles are included. Click to enlarge:



For contextual comparison, here's that decade versus this decade.

Calendar Year	1980	2010
Calls	4,326	38,151
City Pop	150,255	403,892
City Size	55.165	143.865
Stations	15	27
Average Station Age	15	27.8
Engine Co	16	28
Aerial Truck Co	2	8
Service Truck Co	3	n/a
Rescue Co	2	3
District/Bat Chief	3	4
Chief	Keith	McGrath
Fiscal Year	FY80	FY10
Authorized Positions	325	568
Admin	21	7
Prevention	5	25
Operations	299	520
Services	n/a	9
Training	n/a	7

Adopted Budget 5,040,282 50,481,355

What's the difference in the 2 rows named "Calls" (rows 2 & 7) ? Values are the same in each for 1980 but different for 2010

Paul - 12/13/12 - 09:25

The second row called Calls was a typo. It's been removed.

Legeros - 12/13/12 - 09:30

Name: (real name
preferred)

E-mail: (optional)

Web Site: (optional)

Remember personal info?

Yes

No

Comment:

/ [Textile](#)

Comment moderation is enabled on this site. This means that your comment will not be visible on this site until it has been approved by an editor.

To prevent spam we require you to answer this silly question

What are the FIRST TWO LETTERS of the word 'fire'?

[\(Register your username / Log in\)](#)

Notify: Yes, send me email when someone replies.

Hide email: Yes, hide my email address.

Small print: All html tags except and <i> will be removed from your comment. You can make links by just typing the url or mail-address.