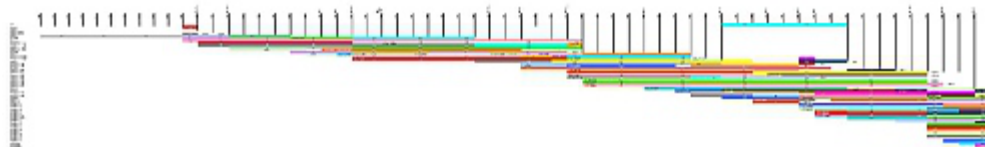


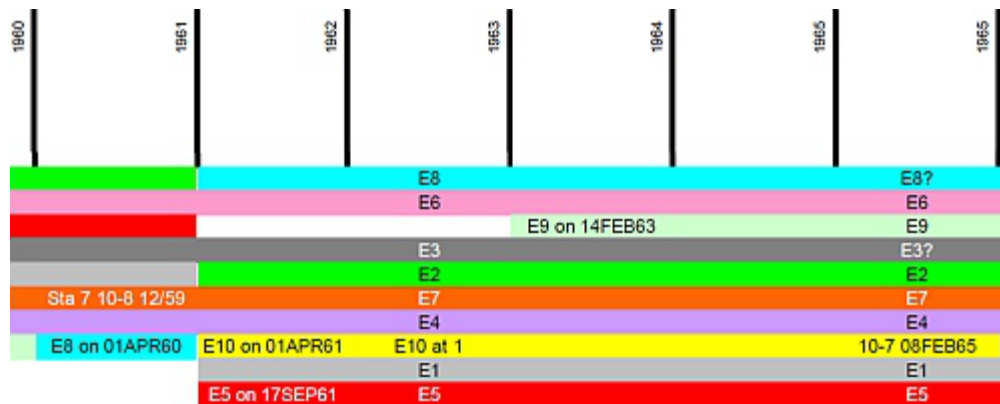
Raleigh Fire Apparatus Histories as Color Charts

09/09/14 179 W, 2 I - + 8 - 1

Mystery chart, any guesses? Baked good consumption at fire stations over time, with assorted frosting colors? Frequency of Hawaiian shirt acquisitions over the years, mapped to favorite floral patterns? How about a six-foot spreadsheet-turned-color chart, depicting the history of Raleigh's pumping engines! What the heck, and why the heck?



They were designed by Yours Truly some years ago, as a means of charting Raleigh's apparatus histories. One chart for engines, another for aerial and service trucks. Super-easy to execute. Use a spreadsheet, draw borders for each year, and annotate with milestones such as station openings. Helped immensely for figuring what truck served where. Here's a closer look:



Worked great for my purposes, and is probably fine for any fleet history. Such as ambulances or rescue trucks. Shoot me a message if you want more details.

[View the engine chart](#) (PDF)
[View the aerial/service ladder chart](#) (PDF).

Note: Both documents require some serious zooming, to see the otherwise wee text.

Name: (real name preferred)
 E-mail: (optional)
 Web Site: (optional)

Remember personal info?
 Yes
 No

Comment: / [Textile](#)