

Friday's Major House Fire with Fourteen Fire Departments

02/22/15 534 W, 2 I - + 10 - 5

Fourteen fire departments from Wake County (and one from Johnston County) battled a major house fire in southern Wake County on Friday. Though the structure was of "ordinary size", there were numerous challenges ranging from roadway access to water supply to building construction. Here are some notes on the incident:

- Dispatched about 10:40 a.m.
- 8001 Caddy Road. One-story structure with partial basement. 3,733 square-feet, built 1952.
- Eleven-acres of land. Vehicular access via gate on Division D side. Iron fence on Division C and D sides.
- Fire found in basement.
- Extension to first-floor and attic, through void spaces in walls.
- Building construction included sections of log cabin construction, which further challenged crews.
- Exterior hazards included icy terrain and a filled swimming pool beside the basement access door.
- Access issues included narrow front gate, so first engine couldn't get close to the house.
- After initial units arrived, an asphalt truck drove to the scene. It became stuck in a ditch after attempting to turn around. This blocked access from additional units. Truck was pulled from ditch by fire engine.
- Access issues on roadway also included icy conditions on two hills. Sand truck arrived some hours later, from Department of Transportation.
- Controlled about 4:30 p.m.

Run Card

- Fairview E3, E2, Tanker 7, Fuquay-Varina E4, Tanker 1 originally dispatched.
- Fairview E1, R1, Tanker 6; Garner E9, E3, Tanker 12 added.
- North Region Tanker Task Force requested: Durham Highway P2, Bay Leaf Tanker 127, Tanker 257, Wake Forest Tanker 2, Stony Hill Tanker 268.
- Two engines from Raleigh requested, along with a third additional engine. Raleigh E13, L8 dispatched, along with Apex E4.
- ~~Cary E4~~; Holly Springs E3; Swift Creek Tanker 2 added.
- Cleveland E3, Morrisville E3, Cary E6, R2 added.
- Medical: EMS 52, EMS 11, EMS 5, D1, Chief 105.
- What's right/wrong about that dispatch/request sequence?

Departments and Units:

1. Apex E4
2. Bay Leaf Tanker 127, Tanker 257 (believe they were both diverted for coverage)
3. Cary E4, E6, R2
4. Cleveland E3
5. Durham Highway P2
6. Fairview E3, E2, E1, Tanker 6, Tanker 7, R1, C1
7. Fuquay-Varina E4, Tanker 1
8. Garner E9, E3, Tanker 12, B1
9. Holly Springs E3
10. Raleigh E13, L8, B2
11. Morrisville E3
12. Stony Hill Tanker 268
13. Swift Creek Tanker 2
14. Wake Forest Tanker 2

Plus Wake County Fire Services, Wake County Emergency Management.

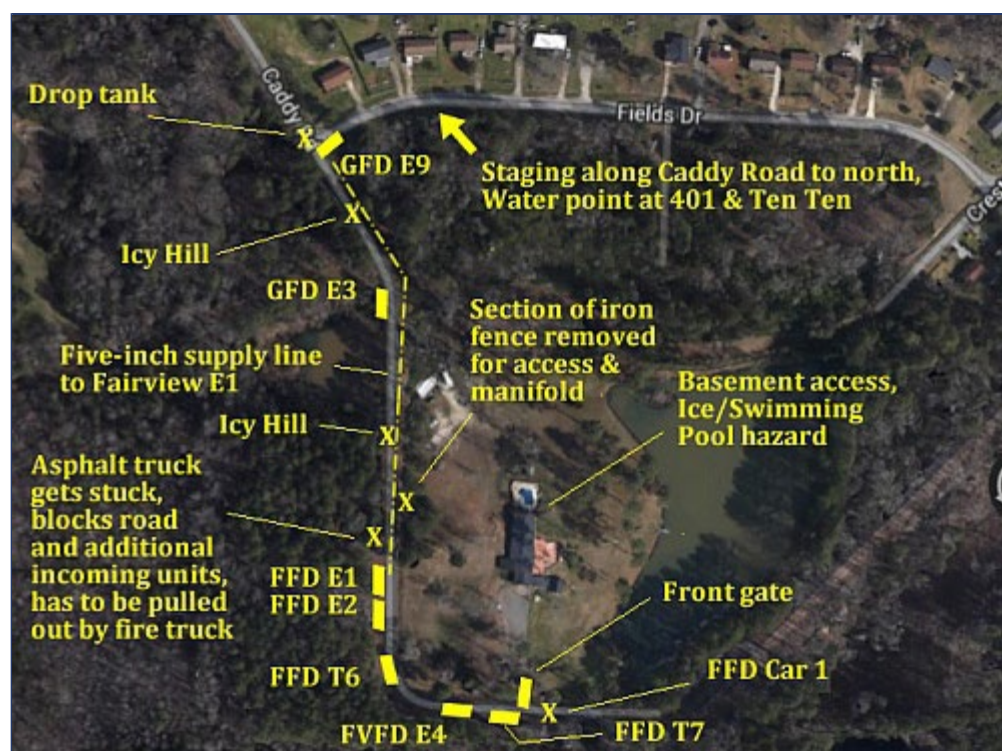
Coverage

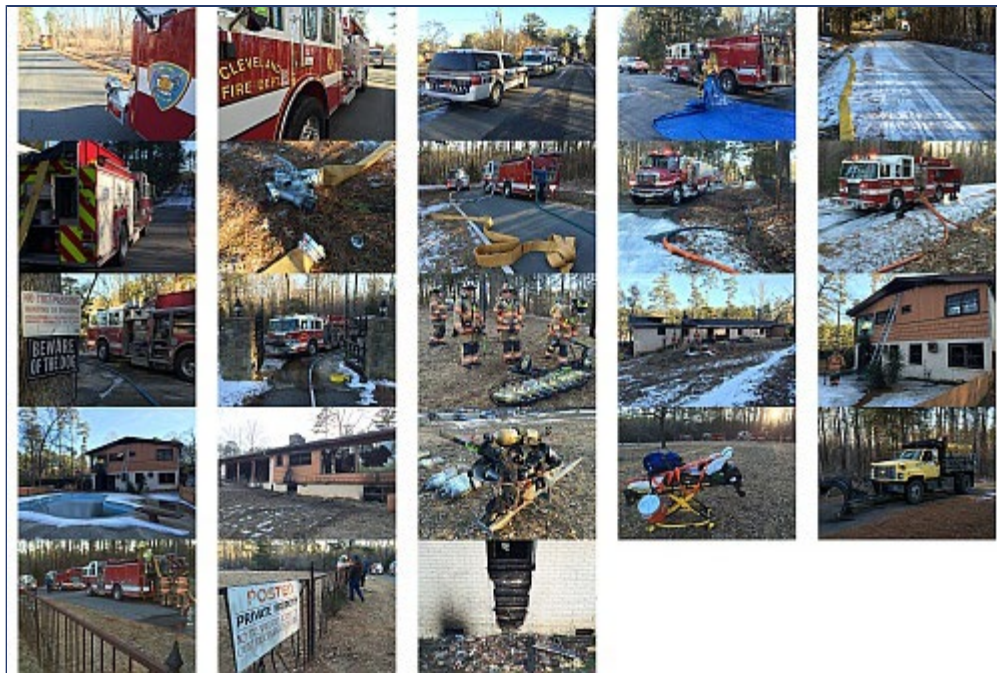
- Swift Creek E3 to Fairview Station 1
- Bay Leaf Tanker 127 to Fairview Station 2
- Bay Leaf Tanker 257 to Garner Station 2

Water Supply / Hose Lines

- Water shuttle required, with drop tank at Caddy and Fields Drive.
- That's some 1,200 feet down Caddy Drive (and two hills) to the front gate.
- Water point was beside/behind Smithfield Chicken 'n' Barbecue, at Ten Ten Road and Highway 401. That's 0.6 miles away.
- Combination of relay and nurse pumping. Two or maybe three relay pumpers. See diagram below.
- Courtyard lay from front gate on Division D side, which was some 350 feet to the basement access on Division B side.
- Manifold placed in operation on Caddy Drive on Division A side, with section of iron fence removed, to allow personnel and vehicle access.
- Second courtyard lay from manifold on Caddy Drive?

Here's "interpretative map" based on observations at the **end** of the incident, along with some phone photos. Pictures from my cameras will take another day or two to be posted. Click to enlarge:





Add Eastern Wake Pumper 1 to Garner #4 for coverage.

D.Cates - 02/22/15 - 18:52

Looks like a heck of a water supply a mere 50 feet from the structure.

Rescue Ranger - 02/22/15 - 21:39

@Rescue Ranger. Yea if you could get a truck to it. Couldn't hardly get down the street and still had to add about two hundred feet to each line due to access. Must not have gotten any ice where you are from!

911 - 02/23/15 - 13:50

Does RFD dispatch closest engine(s) when they are requested like this, or is it policy to send E-13?

Chris - 02/23/15 - 17:07

Chris, the IC requested "two Raleigh engines" and, if memory serves, said something to the effect of "contact Car 20 [shift supervisor] and let them decide who to send." Thus RFD chose E13 and L8 as the responding units.

Legeros - 02/23/15 - 17:21

I don't think CFD E4 responded.

fire1983 - 02/25/15 - 11:16

Fuquay Battalion 1 had safety on side Charlie.

FV - 02/25/15 - 13:01

Name: (real name preferred)
E-mail: (optional)
Web Site: (optional)

Remember personal info?

Yes

No

Comment:

/ [Textile](#)