

Clayton Fire Department Buildings in 1925

04/05/15 174 W, 4 I - + 6 - 2

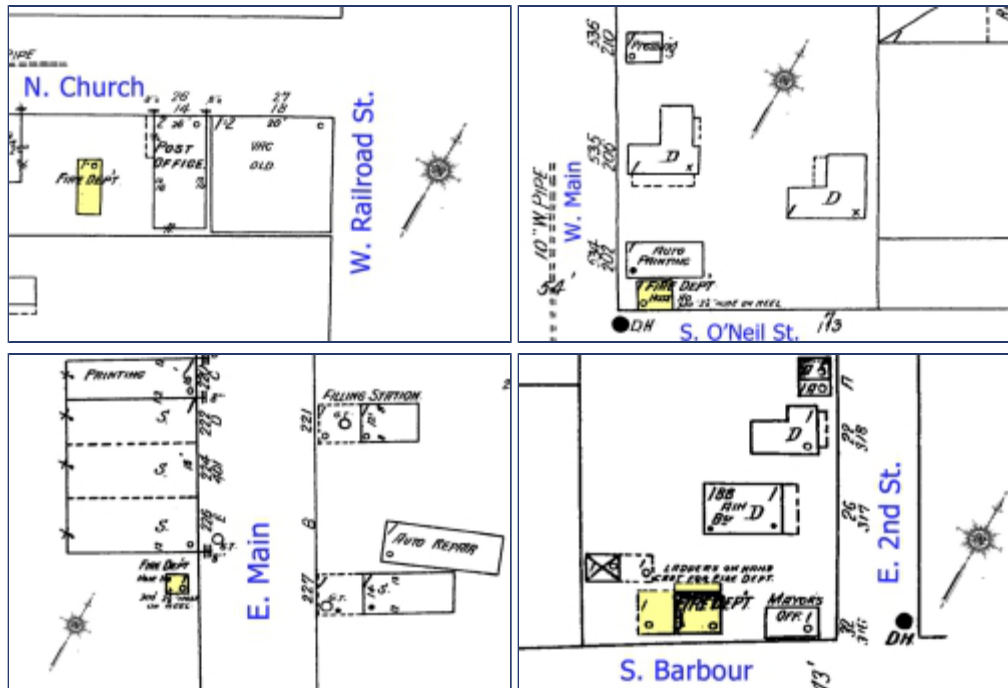
Random Sanborn Fire Insurance Map excerpts for your Sunday enjoyment. Clayton Fire Department as depicted in June 1925. Description of fire department:

"Volunteer, 40 men, 1 chief and one Asst. partly paid, one fire station with Reo truck carrying two 35 gal. chemical tanks, 750' 2 1/2" hose, and 36' extension ladder. One hose [house] at each end of business section with 300' 2 1/2" hose on hand reel at each & 75' ladders on hand cart kept in building in center of town together with 500' 2 1/2" hose in reserve. Department partly motorized. No fire alarm system. Siren & bell at fire station for giving alarm."

Water system included 40 double hydrants, with "domestic pressure" of 62 pounds and "fire pressure" of 120 pounds. Here are the four fire department buildings as shown on the maps. Their locations:

- Fire station - Church west of Railroad
- Hose house - Main and O'Neil, northeast corner
- Hose house - Main between Lombard and Smith
- Ladder truck - Barbour west of 2nd

Click to enlarge:



Name: (real name preferred)
 E-mail: (optional)

Remember personal info?
 Yes