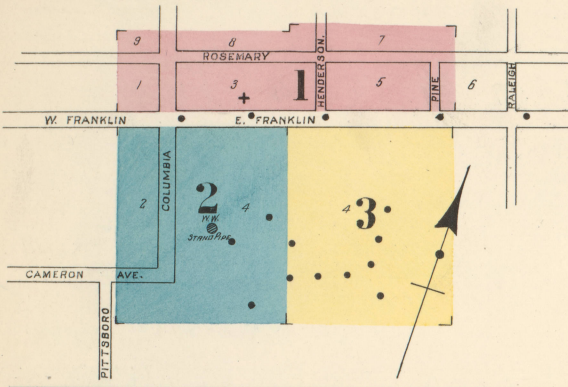
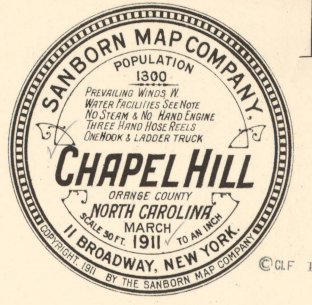


INDEX.

SPECIALS.	SHEET	SHEET
A	Methodist Episcopal Church,.....	2
A. T. O. Fraternity Hall,.....	1	
C	Pickard's Hotel,.....	1
Central Hotel,.....	3	
D	Post Office,.....	2
Durham Hosiery Mills, Mill No. 4,.....	4	
E	Presbyterian Church,.....	4
Episcopal Church,.....	3	
F	S. R. R. Depot, at Venable,.....	4
Fire Department,.....	1	
L	Standard Oil Co.,.....	4
Lloyd, H., Flour Mill and Ginney,.....	4	
T. F., M'F' Co., Yarn M'F'g,.....	4	
M	Thelma Knitting Mill,.....	4
N	Union Baptist Church,.....	4
P	University Inn,.....	3
	of North Carolina, 2 & 3	

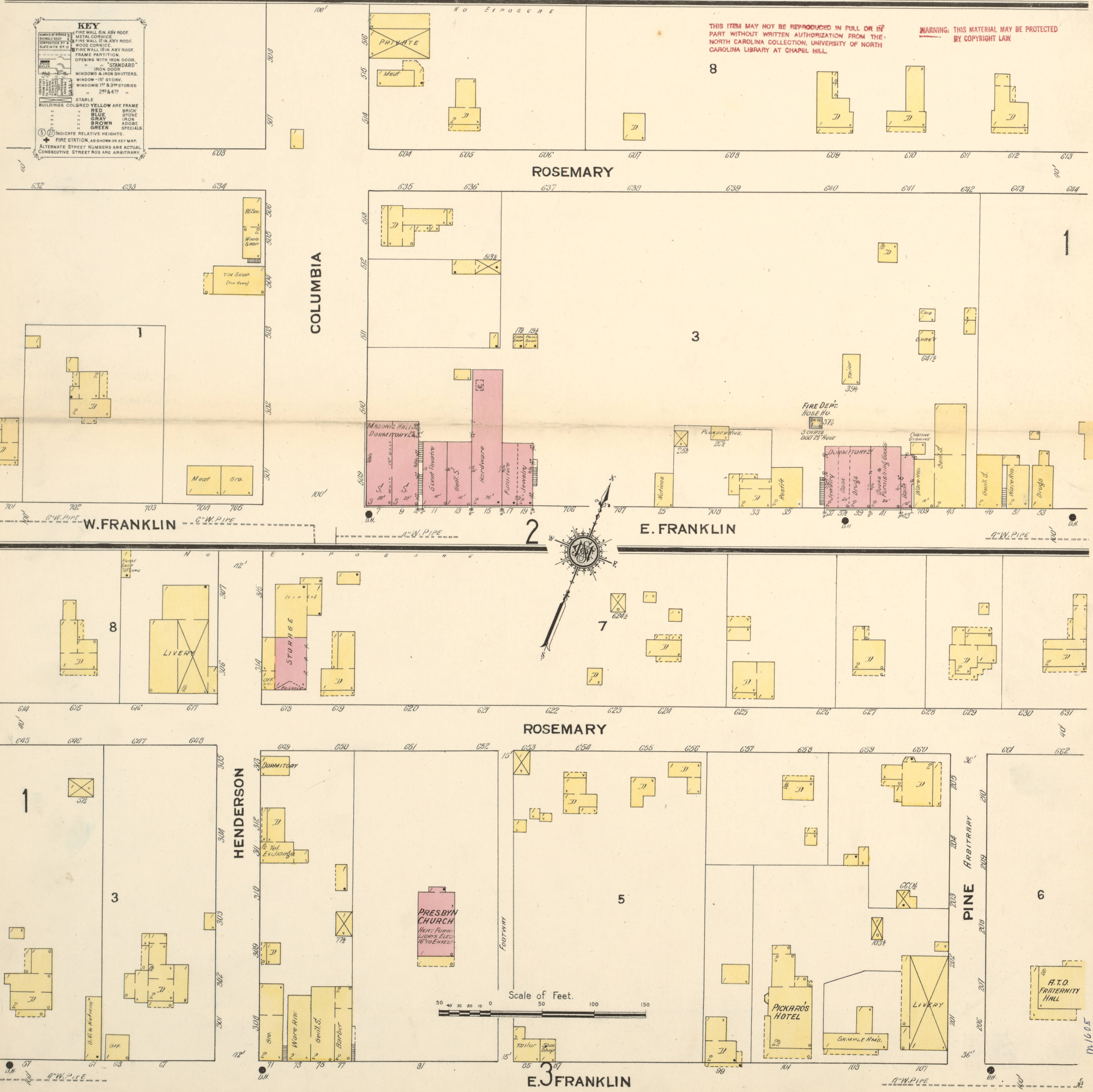


WATER FACILITIES:
Water is obtained from a creek 1/2 miles from town. Pumping outfit consists of one electrically driven 4 stage centrifugal pump, capacity 25,000 gals. per hr. An auxiliary steam plant, consisting of two boilers, two reciprocating pumps, capacity 12,000 gallons per hour. Water is pumped from this station through 6" mains to a 50,000 gal. reservoir. From reservoir water is pumped by means of a duplex pump, capacity 350 gals. per min. into stand pipe of 20,000 gals. capacity, reservoir & stand pipe on the grounds of the University. Water is distributed from stand pipe through 4" mains to all parts of the system. Domestic pressure about 40 lbs., & direct pressure about 90 lbs. - 5 lbs. located on Franklin St. on the University grounds. - 3 dead ends in entire system. The entire water supply, pumping stations & mains belong to the University. Telephone Conn. in pumping station.

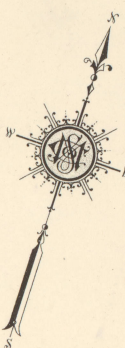
FIRE DEPT.
Consists of three hand hose reels, carrying about 1,000' 2 1/2" cotton rubber lined hose. One H & L Co. hose reel & H & L Truck operated by independent companies of about ten members each. Apparatus is housed in its own building on Franklin St. the center of the business portion of the town.

THIS ITEM MAY NOT BE REPRODUCED IN FULL OR IN PART WITHOUT WRITTEN AUTHORIZATION FROM THE NORTH CAROLINA COLLECTION, UNIVERSITY OF NORTH CAROLINA LIBRARY AT CHAPEL HILL.

WARNING: THIS MATERIAL MAY BE PROTECTED BY COPYRIGHT LAW

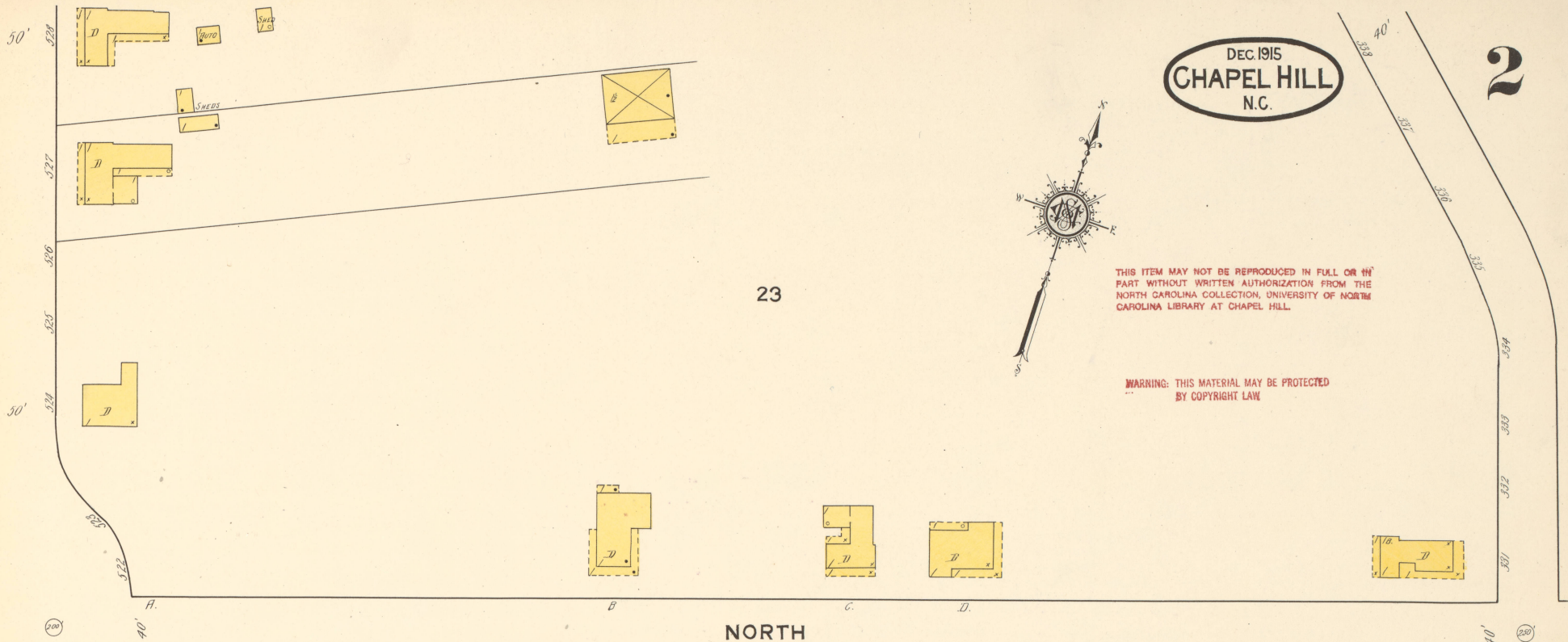


23



THIS ITEM MAY NOT BE REPRODUCED IN FULL OR IN PART WITHOUT WRITTEN AUTHORIZATION FROM THE NORTH CAROLINA COLLECTION, UNIVERSITY OF NORTH CAROLINA LIBRARY AT CHAPEL HILL.

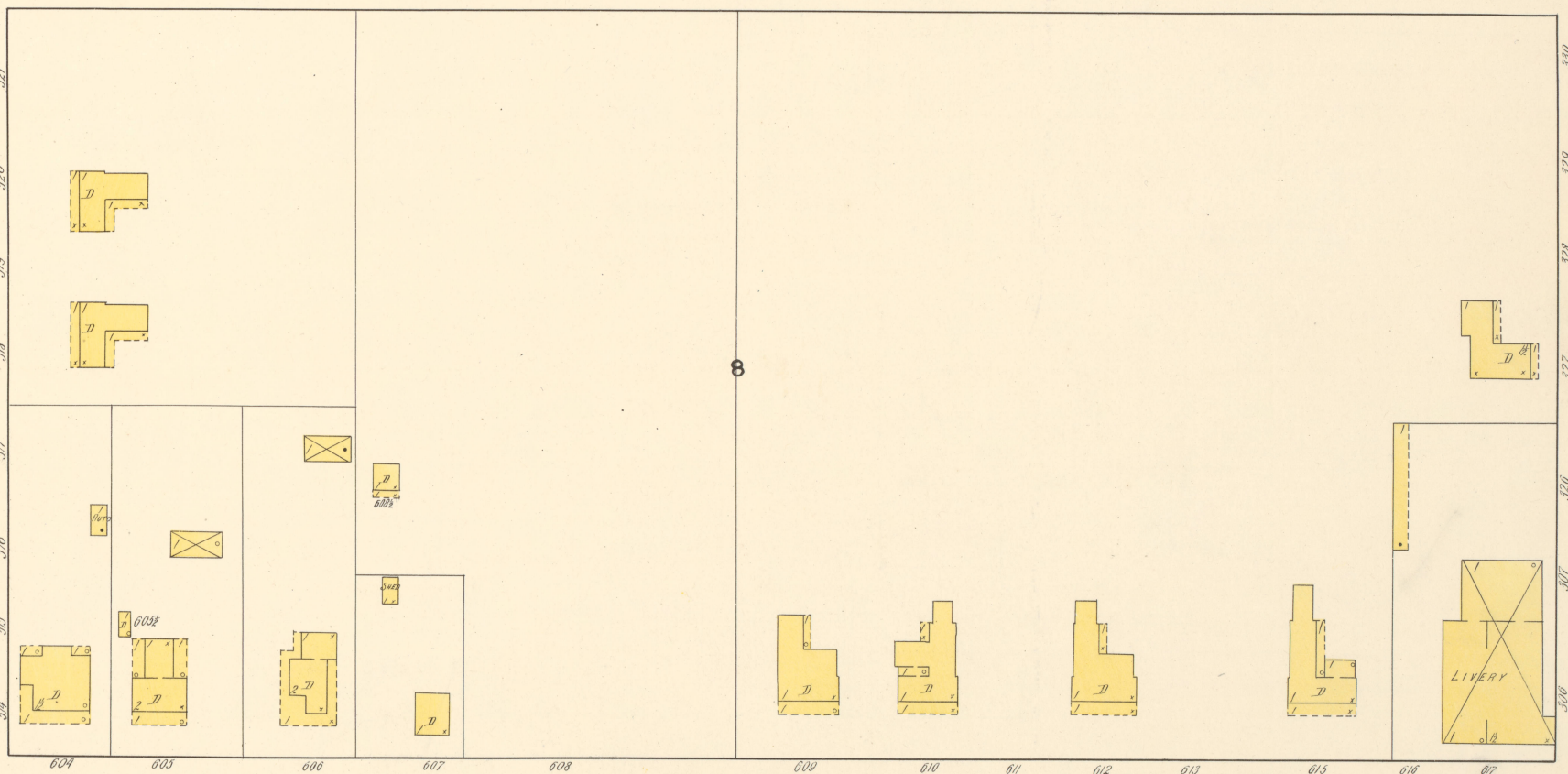
WARNING: THIS MATERIAL MAY BE PROTECTED BY COPYRIGHT LAW



NORTH

COLUMBIA

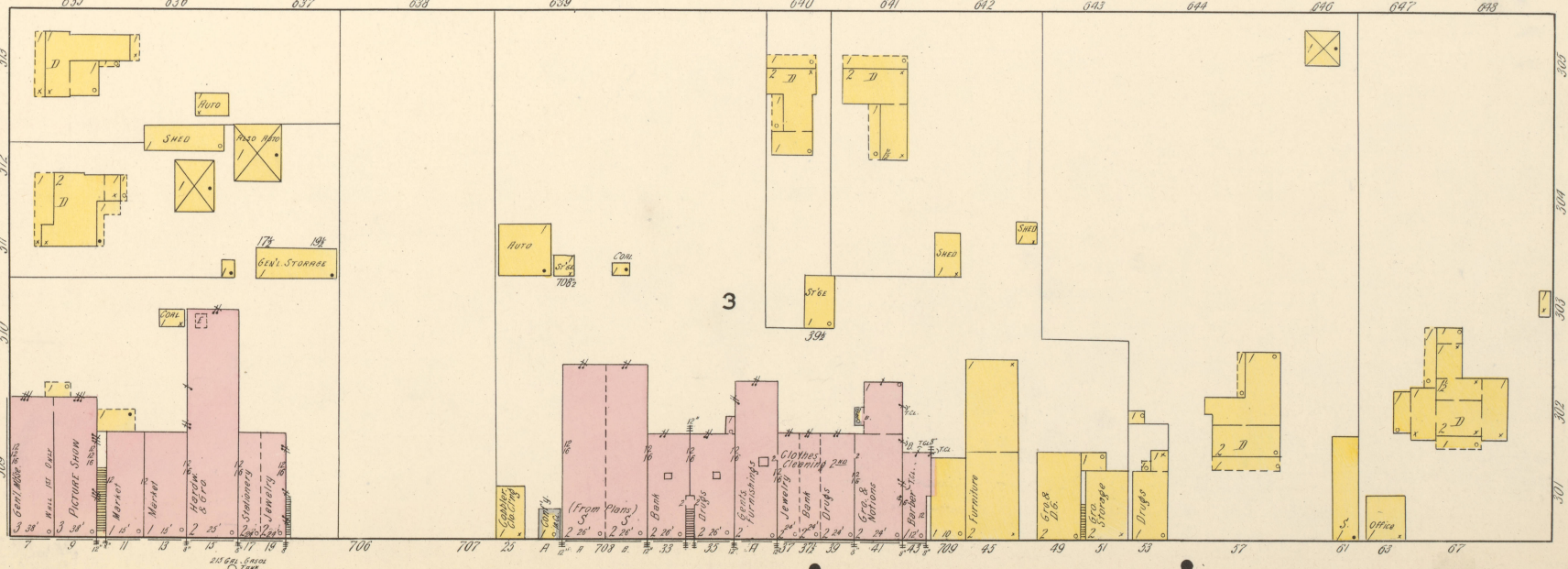
HENDERSON



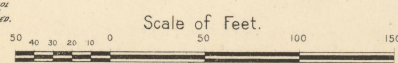
ROSEMARY

5

3



FIRE DEPT
20 MEN-2000 2 1/2" HOSE
TURNED DOWN BY ROSE HENDERSON
TURNED DOWN HOSE RECEIVED
100'

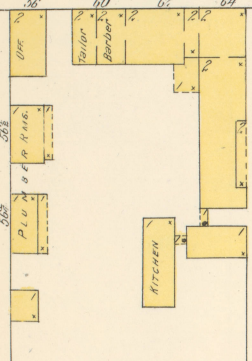


E. FRANKLIN

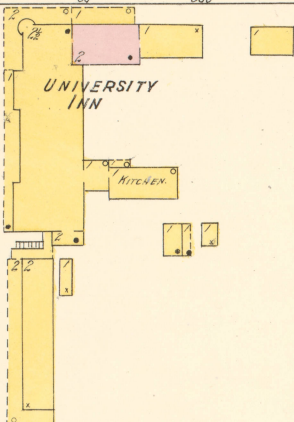
4

100'

CENTRAL HOTEL



UNIVERSITY INN

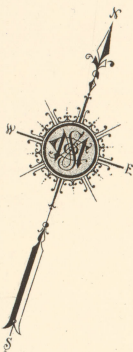


MAR. 1911
CHAPEL HILL
N.C.



THIS ITEM MAY NOT BE REPRODUCED IN FULL OR IN PART WITHOUT WRITTEN AUTHORIZATION FROM THE NORTH CAROLINA COLLECTION, UNIVERSITY OF NORTH CAROLINA LIBRARY AT CHAPEL HILL.

WARNING: THIS MATERIAL MAY BE PROTECTED BY COPYRIGHT LAW.



4

UNIVERSITY OF NORTH CAROLINA

2 PERSON HALL

