

INCLUDING
CARRBORO
JAN 19 1916

INDEX

SHEETS			SPECIALS		
SHEET	I	J	SHEET	A	B
I Place (arbitrary), at Carrboro	1	J Place (arbitrary), at Carrboro	1	A. M. E. Church	5
A Alley (arbitrary)	2	Jones Ferry Road, at Carrboro	2	Baptist Church	6
A Street (arbitrary)	3	N. S. Robertson to E. of S. E. Y Tracts S. S.	3	Blanche Hosery Mill (formerly)	7
B Road (arbitrary), at Carrboro	4	Kent Court (arbitrary), at Carrboro	4	Carrboro Baptist Church	8
Battle Lane, Boundary	5	Lindsay, at Carrboro	5	Meth. Episc. Church (South)	9
C Road (arbitrary), at Carrboro	6	Lloyd, at Carrboro	6	Chapel of the Cross (Episcopal)	10
Cameron Ave.	7	McCaulley, at Carrboro	7	Christian Church	11
Chapel	8	Mallett, at Carrboro	8	Cotton Chapel, C. M. E. Church	12
Columbia	9	Merritt's Mill Road, at Carrboro	9	Durham Hosery Mills, Mill No. 4	13
Crake Lane	10	D Street (arbitrary), at Carrboro	10	Fire Department, Columbia St.	14
D Street (arbitrary), at Carrboro	11	E Street (arbitrary), at Carrboro	11	First Baptist Church (Negro)	15
Battle Lane, Boundary	12	F Street (arbitrary), at Carrboro	12	Fraternity House	16
E Street (arbitrary), at Carrboro	13	Franklin	13	G New Greensboro Road, at Carrboro	17
Eden Court (arbitrary), at Carrboro	14	Franklin	14	Old Greensboro R'd to Jones Ferry R'd North	18
F Street (arbitrary), at Carrboro	15	G Street (arbitrary), at Carrboro	15	Henderson to Henderson	19
Franklin	16	Glennburnie Road, at Carrboro	16	Henderson to Glennburnie Road	20
Glennburnie Road, at Carrboro	17	H Street (arbitrary), at Carrboro	17	O Old Greensboro Road, at Carrboro	21
H Street (arbitrary), at Carrboro	18	Henderson	18	P Patterson	22
Henderson	19	Henderson	19	Pike	23
Henderson	20	Henderson	20	Pittsboro	24
Henderson	21	Henderson	21	Road, at Carrboro	25
Henderson	22	Henderson	22	R Raleigh	26
Henderson	23	Henderson	23	Rosemary	27
Henderson	24	Henderson	24	Rosemary Ave. at Carrboro	28
Henderson	25	Henderson	25	S Rosemary	29
Henderson	26	Henderson	26	S Robertson Ave. at Carrboro	30
Henderson	27	Henderson	27	S Rosemary	31
Henderson	28	Henderson	28	S Rosemary	32
Henderson	29	Henderson	29	S Rosemary	33
Henderson	30	Henderson	30	S Rosemary	34
Henderson	31	Henderson	31	S Rosemary	35
Henderson	32	Henderson	32	S Rosemary	36
Henderson	33	Henderson	33	S Rosemary	37
Henderson	34	Henderson	34	S Rosemary	38
Henderson	35	Henderson	35	S Rosemary	39
Henderson	36	Henderson	36	S Rosemary	40
Henderson	37	Henderson	37	S Rosemary	41
Henderson	38	Henderson	38	S Rosemary	42
Henderson	39	Henderson	39	S Rosemary	43
Henderson	40	Henderson	40	S Rosemary	44

* Indicates only one side of Street shown.
NOTE.—House Numbers given are arbitrary.

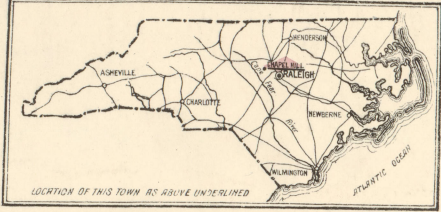
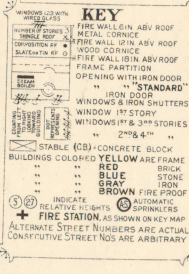
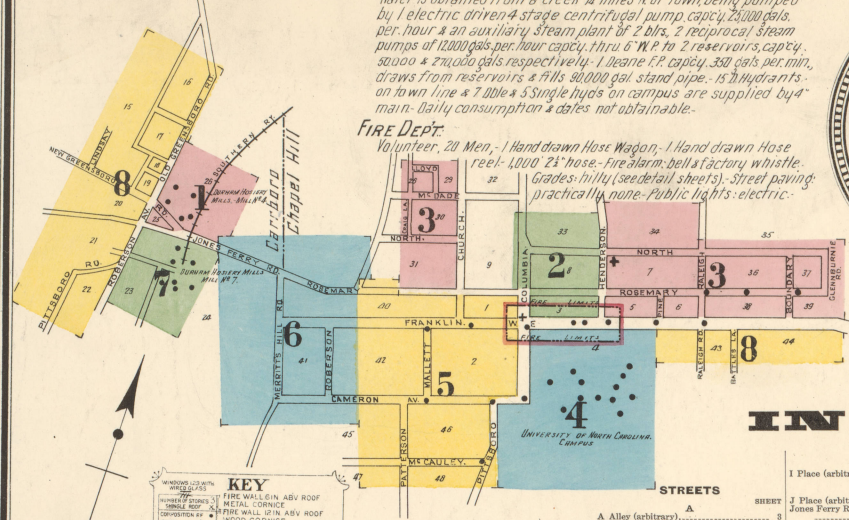
CARRBORO

WATER FACILITIES:

Water is obtained from a creek 1/4 miles N. of town being pumped by 1 electric driven 4 stage centrifugal pump capacity 25,000 gals. per hour & an auxiliary steam plant of 2 blrs. 2 reciprocal steam pumps of 12,000 gals. per hour capacity, thru 6" W.P. 2 reservoirs, capacity 5,000 & 27,000 gals. respectively. 1 Deane F.P. capacity 350 gals. per min. draws from reservoirs & thru 80,000 gal. stand pipe. Is hydraulic on town line & 7000 & 3 Single hydrants on campus are supplied by a main. Daily consumption & rates not obtainable.

FIRE DEPT.

Volunteer, 20 Men, 1 Hand drawn Hose Wagon, 1 Hand drawn Hose reel, 1000 2 1/2" hose, Fire Alarm bell & factory whistle. Grades, hills (see detail sheets), Street paving practically none. Public lights electric.



RD. 208
GREENSBORO
OLD
RD. 205

DURHAM HOSIERY MILLS, MILL NO. 4

WINDING, WARPING, CARDING 1ST
KNITTING, SPINNING, FINISHING. 2ND
MILL CONSTRUCTION

NIGHT SUNDAY & HOLIDAY WATCHMAN, ELD. MAGNETO CLOCK STATIONS, HOURLY ROUNDS, POWER & LIGHTS ELECTRIC, LEAD-HEAT-STEAM-FULL, COAL, GRINNELL AUTO SPRINKLERS, AS SHOWN, WET SYSTEM (LEAD) WARE HQ WHICH IS DRY, HEADS SPACED 8" 10", HYDS & HOSE AS SHOWN. SPRINKLER & HYDRANT SYSTEM SUPPLIED BY 10000 GAL. TANK 45" HIGH & BY KNOWLES UNDERWATERS 750 GAL. PUMP, PUMPS DRAWN FROM 250000 GAL. RESERVOIR. TANK & RESERVOIR FILLED BY DEANE. ELECTRIC PUMP, CAPCY. 750 GALS., ABOUT 1000 SOUTH OF HQ. MILL. (SHEET N-7)

ORANGE LUMBER CO.
NO WATCHMAN, HEAT, LIGHTS OR FIRE APP.
NO BLOWERS, NO FINE APP.
SAW & PLANING MILL

HERBERT LLOYD
COTTON GIN & FLOUR MILL

OLD DEPOT

PROSBERGER & FREIGHT DEPOT

THIS ITEM MAY NOT BE REPRODUCED IN FULL OR IN PART WITHOUT WRITTEN AUTHORIZATION FROM THE NORTH CAROLINA COLLECTION, UNIVERSITY OF NORTH CAROLINA LIBRARY AT CHAPEL HILL.

WARNING: THIS MATERIAL MAY BE PROTECTED BY COPYRIGHT LAW

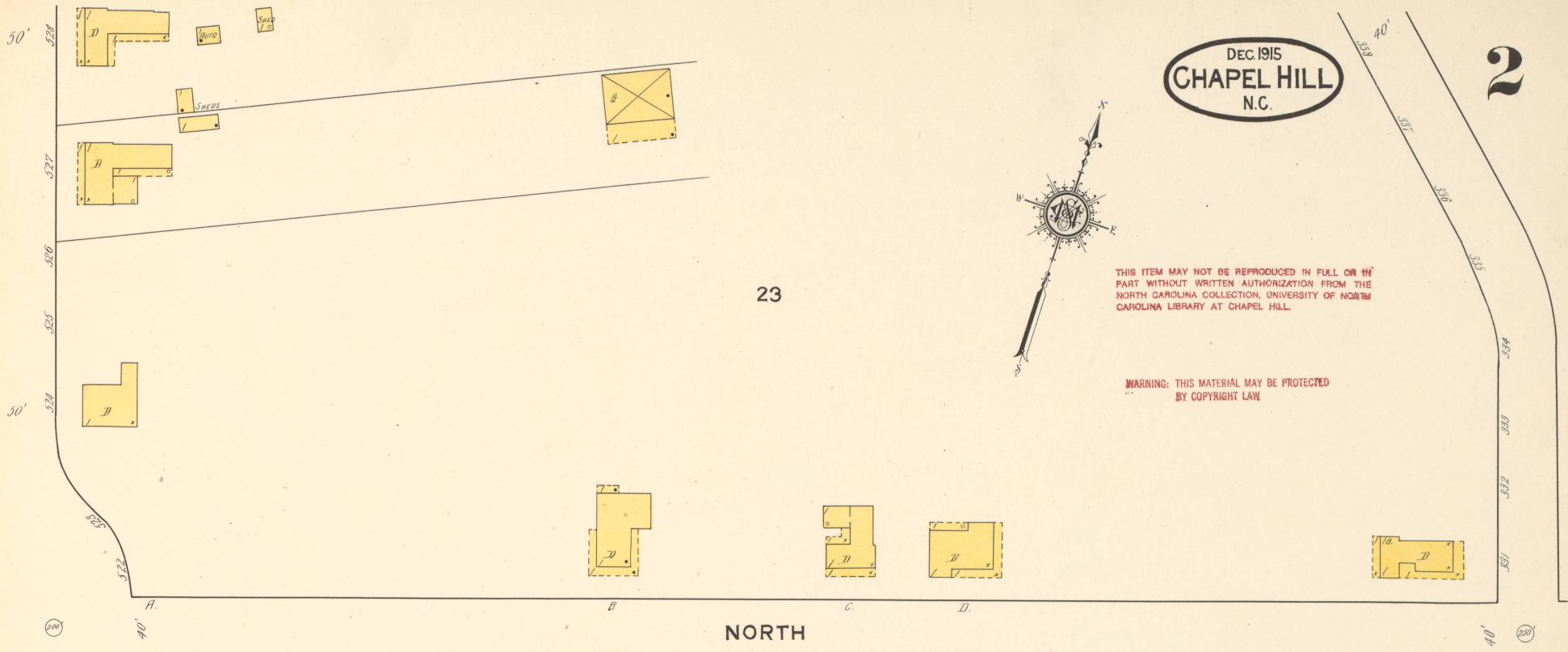
Scale of Feet. 50 100 150

23



THIS ITEM MAY NOT BE REPRODUCED IN FULL OR IN PART WITHOUT WRITTEN AUTHORIZATION FROM THE NORTH CAROLINA COLLECTION, UNIVERSITY OF NORTH CAROLINA LIBRARY AT CHAPEL HILL.

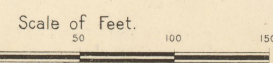
WARNING: THIS MATERIAL MAY BE PROTECTED BY COPYRIGHT LAW.



NORTH

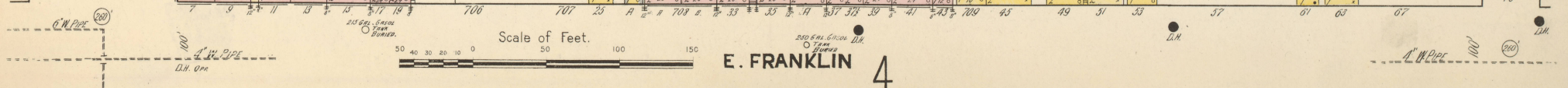


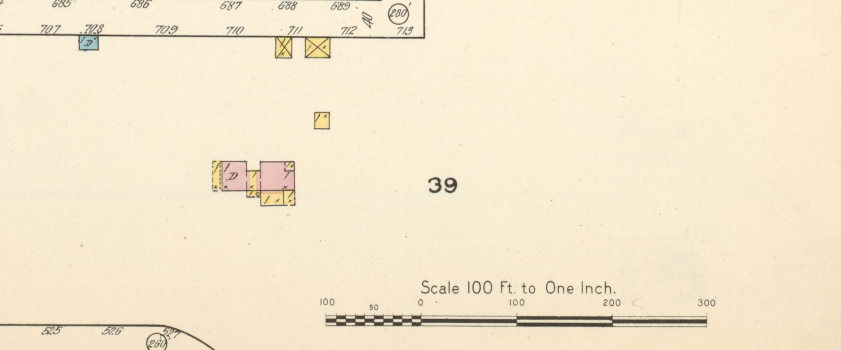
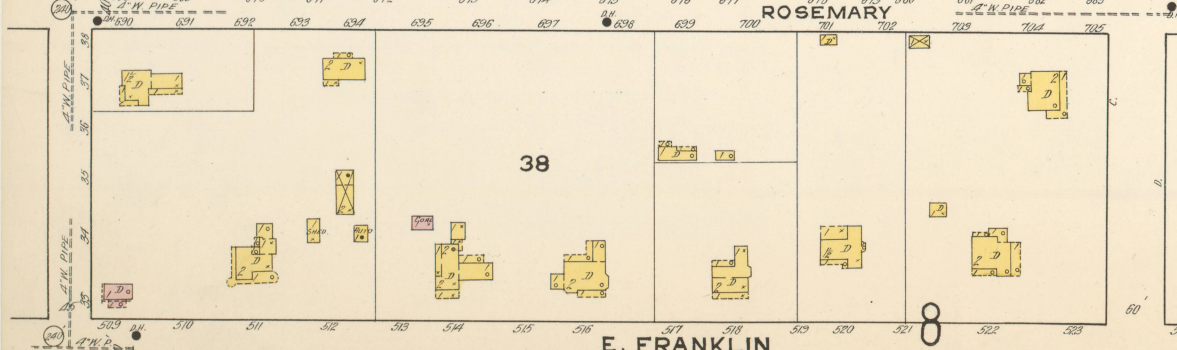
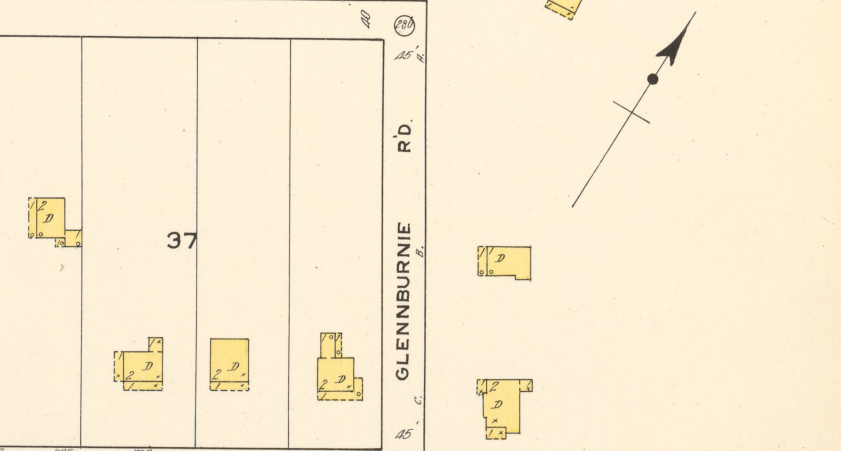
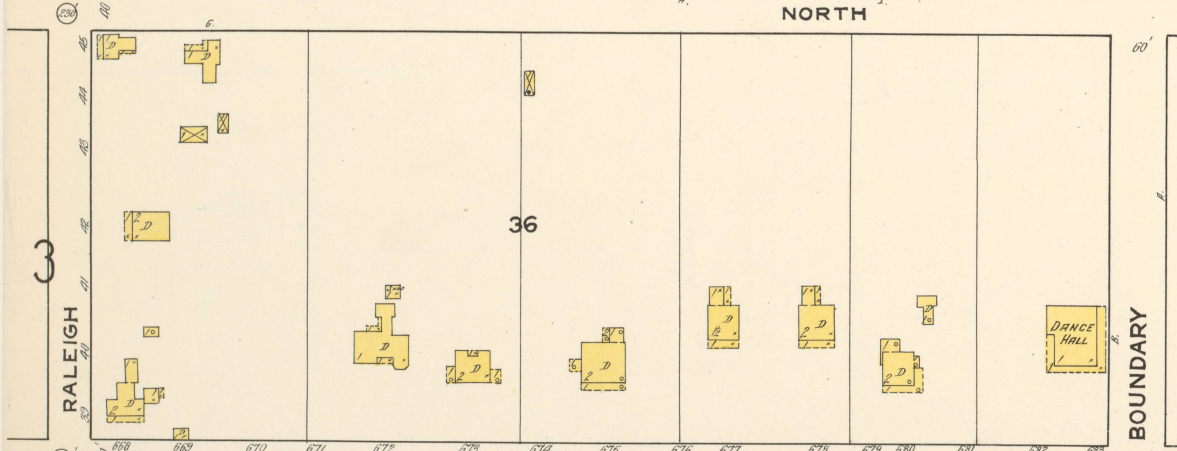
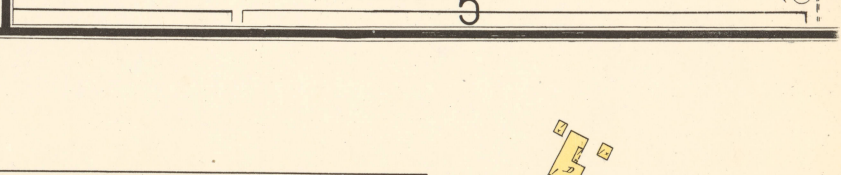
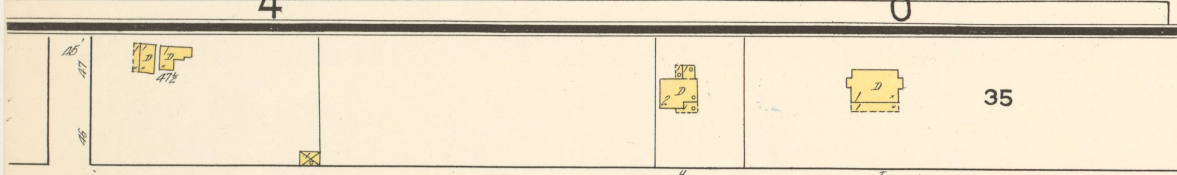
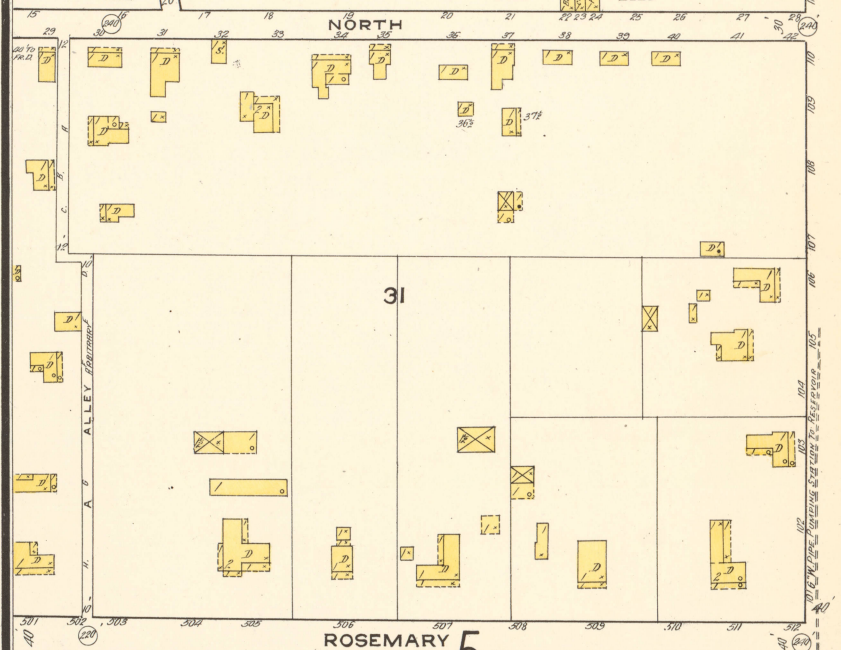
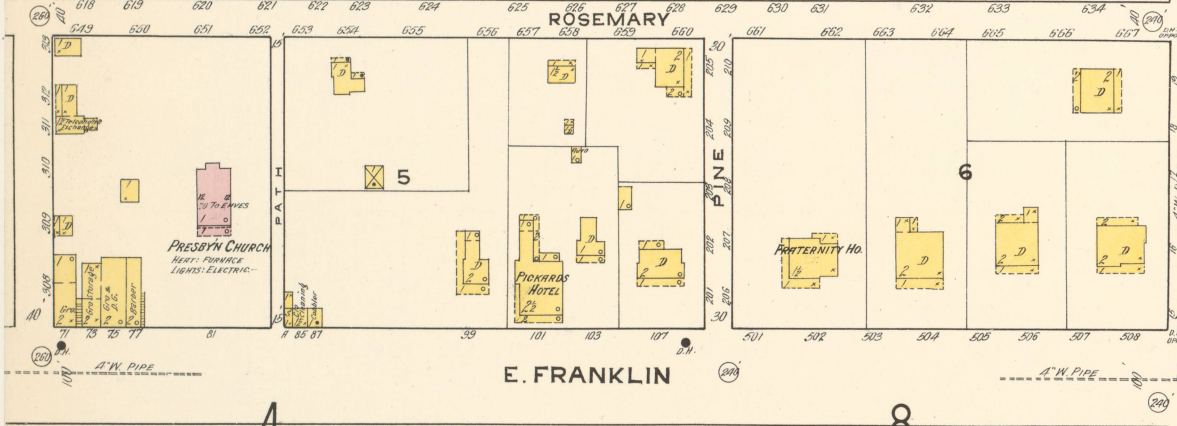
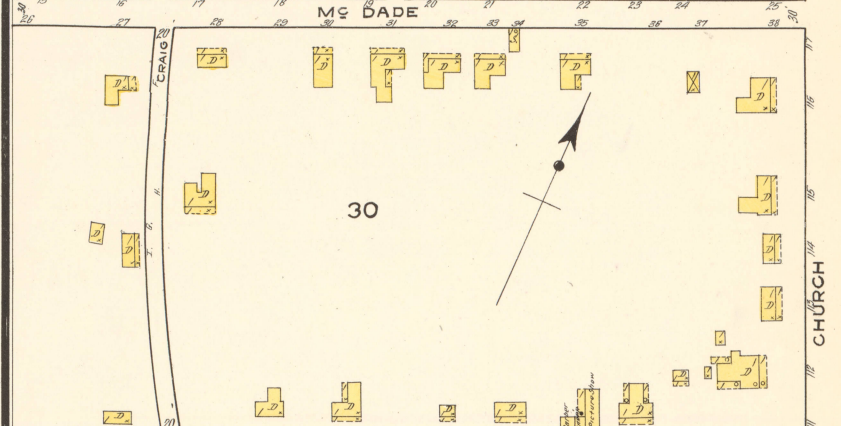
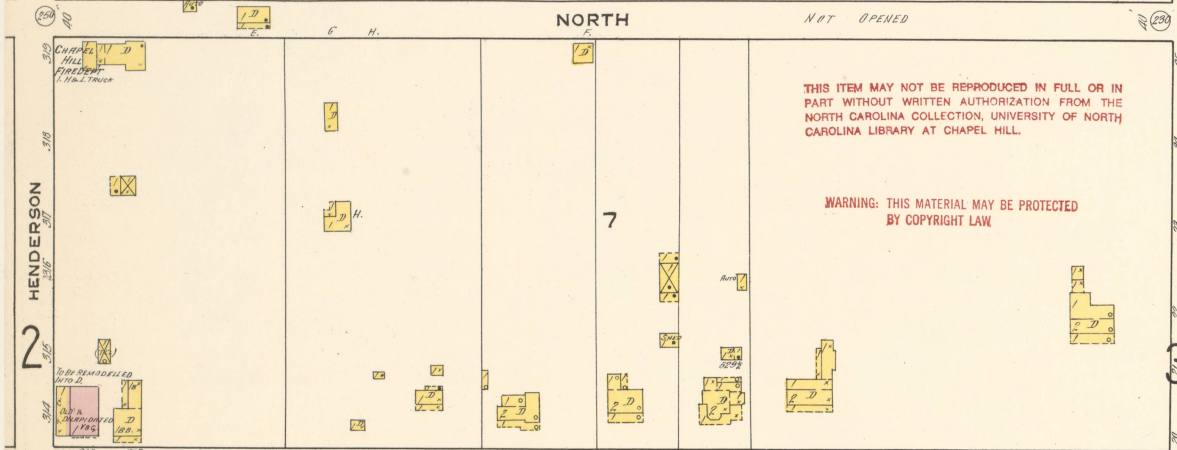
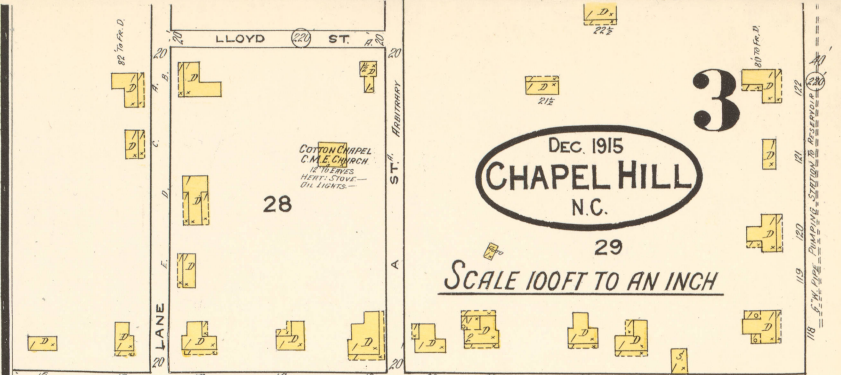
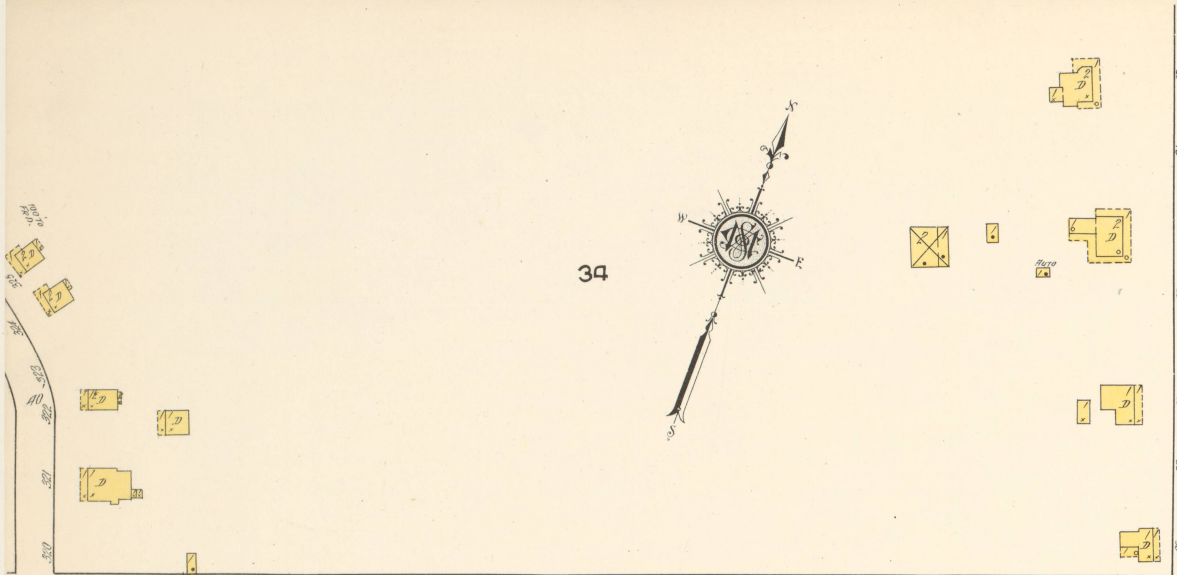
ROSEMARY



5

FIRE DEPT
20 MEN-2000 2 1/2" HOSE
TURNED DOWN BY ROSE HANSON
TURNED DOWN HOSE RECEIVED





2

3

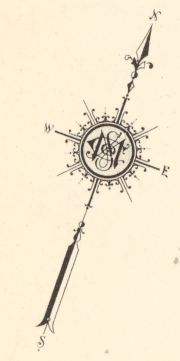
PINE ST.

HENDERSON ST.

E. FRANKLIN

W. FRANKLIN ST.

COLUMBIA



5

8

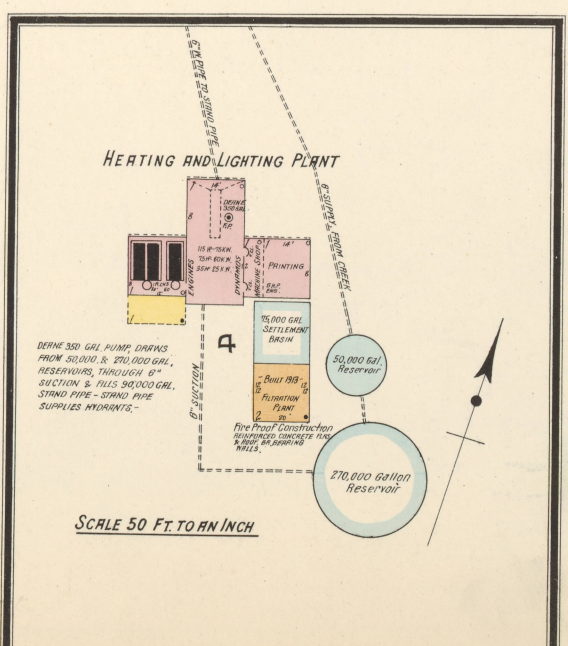
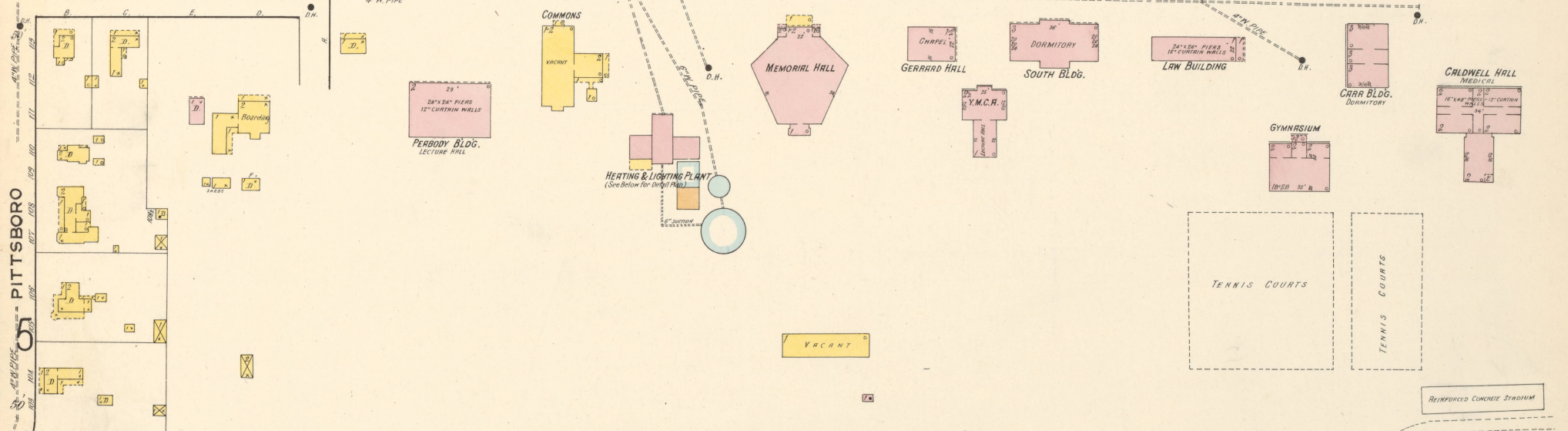
THIS ITEM MAY NOT BE REPRODUCED IN FULL OR IN PART WITHOUT WRITTEN AUTHORIZATION FROM THE NORTH CAROLINA COLLECTION, UNIVERSITY OF NORTH CAROLINA LIBRARY AT CHAPEL HILL.

WARNING: THIS MATERIAL MAY BE PROTECTED BY COPYRIGHT LAW

UNIVERSITY OF NORTH CAROLINA

CAMERON AV.

PITTSBORO

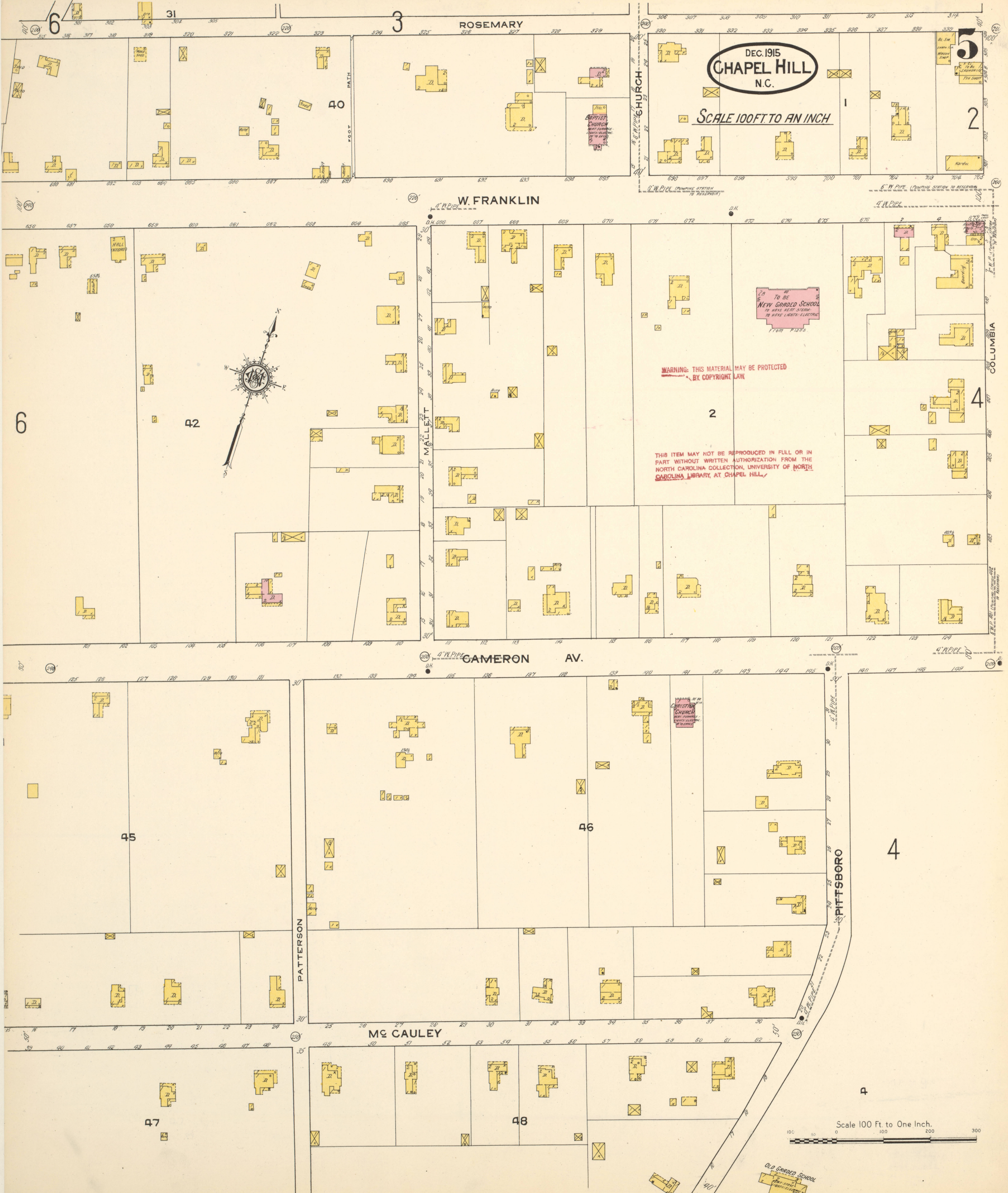


SCALE 50 FT. TO AN INCH

Scale 100 Ft. to One Inch.

EMERSON ATHLETIC FIELD

REINFORCED CONCRETE STADIUM

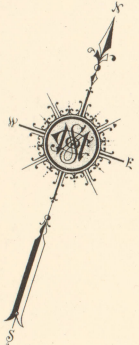


DEC. 1915
CHAPEL HILL
N.C.

SCALE 100 FT TO AN INCH

W. FRANKLIN

CAMERON AV.

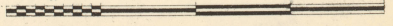


TO BE
NEW GRADED SCHOOL
TO HAVE BEST SEWER
TO HAVE LIGHTS ELECTRIC
FROM PITSB.

WARNING: THIS MATERIAL MAY BE PROTECTED
BY COPYRIGHT LAW

THIS ITEM MAY NOT BE REPRODUCED IN FULL OR IN
PART WITHOUT WRITTEN AUTHORIZATION FROM THE
NORTH CAROLINA COLLECTION, UNIVERSITY OF NORTH
CAROLINA LIBRARY AT CHAPEL HILL.

Scale 100 Ft to One Inch.

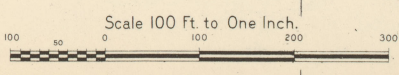
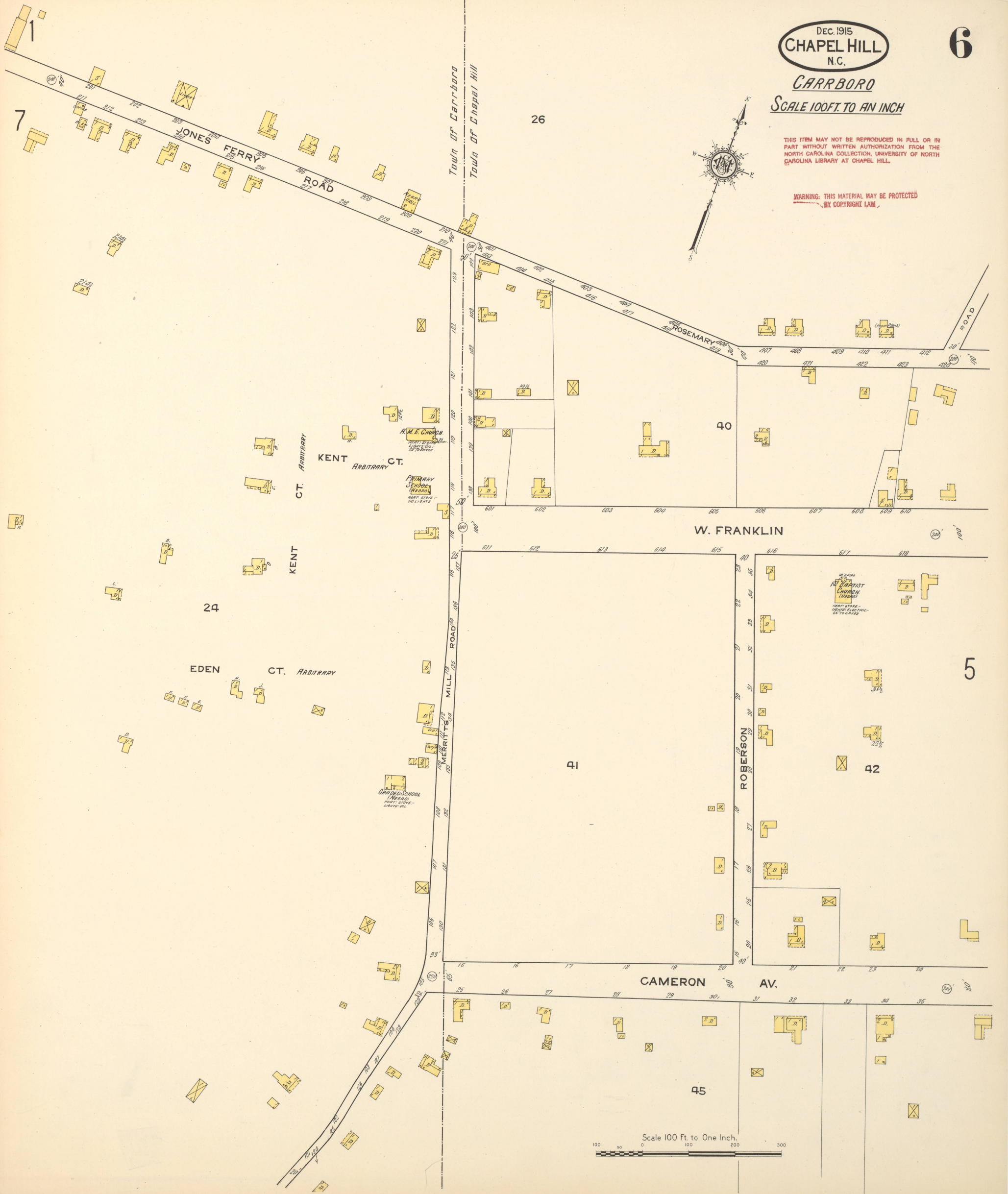
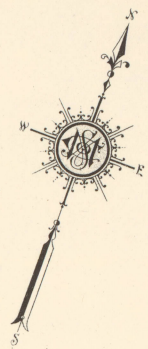


OLD GRADED SCHOOL

CARRBORO
SCALE 100 FT. TO AN INCH

THIS ITEM MAY NOT BE REPRODUCED IN FULL OR IN PART WITHOUT WRITTEN AUTHORIZATION FROM THE NORTH CAROLINA COLLECTION, UNIVERSITY OF NORTH CAROLINA LIBRARY AT CHAPEL HILL.

WARNING: THIS MATERIAL MAY BE PROTECTED BY COPYRIGHT LAW.





NEW GREENSBORO RD.

JONES FERRY RD.

JONES FERRY RD.

ROBERSON AV.

ROAD ARBITRARY

24

23

ROAD ARBITRARY

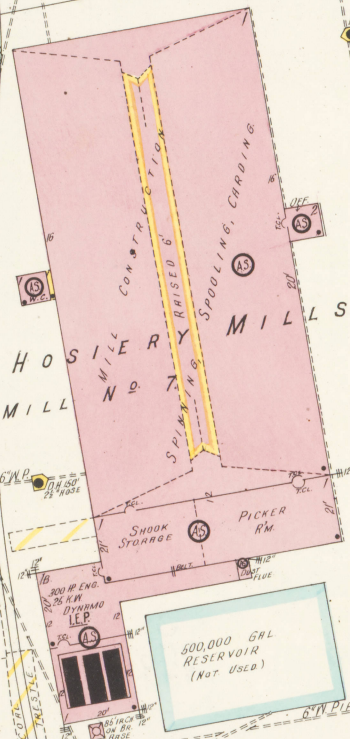
C

DEC. 1915
CHAPEL HILL
N.C.

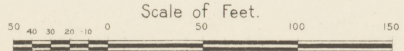
CARRBORO

THIS ITEM MAY NOT BE REPRODUCED IN FULL OR IN PART WITHOUT WRITTEN AUTHORIZATION FROM THE NORTH CAROLINA COLLECTION, UNIVERSITY OF NORTH CAROLINA LIBRARY AT CHAPEL HILL.

WARNING: THIS MATERIAL MAY BE PROTECTED BY COPYRIGHT LAW



NIGHT SUNDAY & HOLIDAY WATCHMAN - NEWMAN CLOCK HOURLY ROUNDS - 8 STATIONS - POWER & WHT - STEAM LIGHTS - ELECTRIC I.E.P. FUEL COAL - GRINNELL AUTOMATIC SPARKLERS THROUGH WET SYSTEM - EXCEPT WARE HO WHICH IS DRY HEADS SPACED 8' 10" - HOYS & HOSE AS SHOWN - SPRINKLER & HYDRANT SYSTEM SUPPLIED BY 30000 GAL TANK ON 75' STEEL TOWER & BY KNOWLES UNDERWRITER 750 GAL PUMP AT MILL NO 4 SHEET 1 TANK FILLED BY DEANE ELECTRIC PUMP 750 GAL CAPCY ABOUT 1000' SOUTH OF MILL

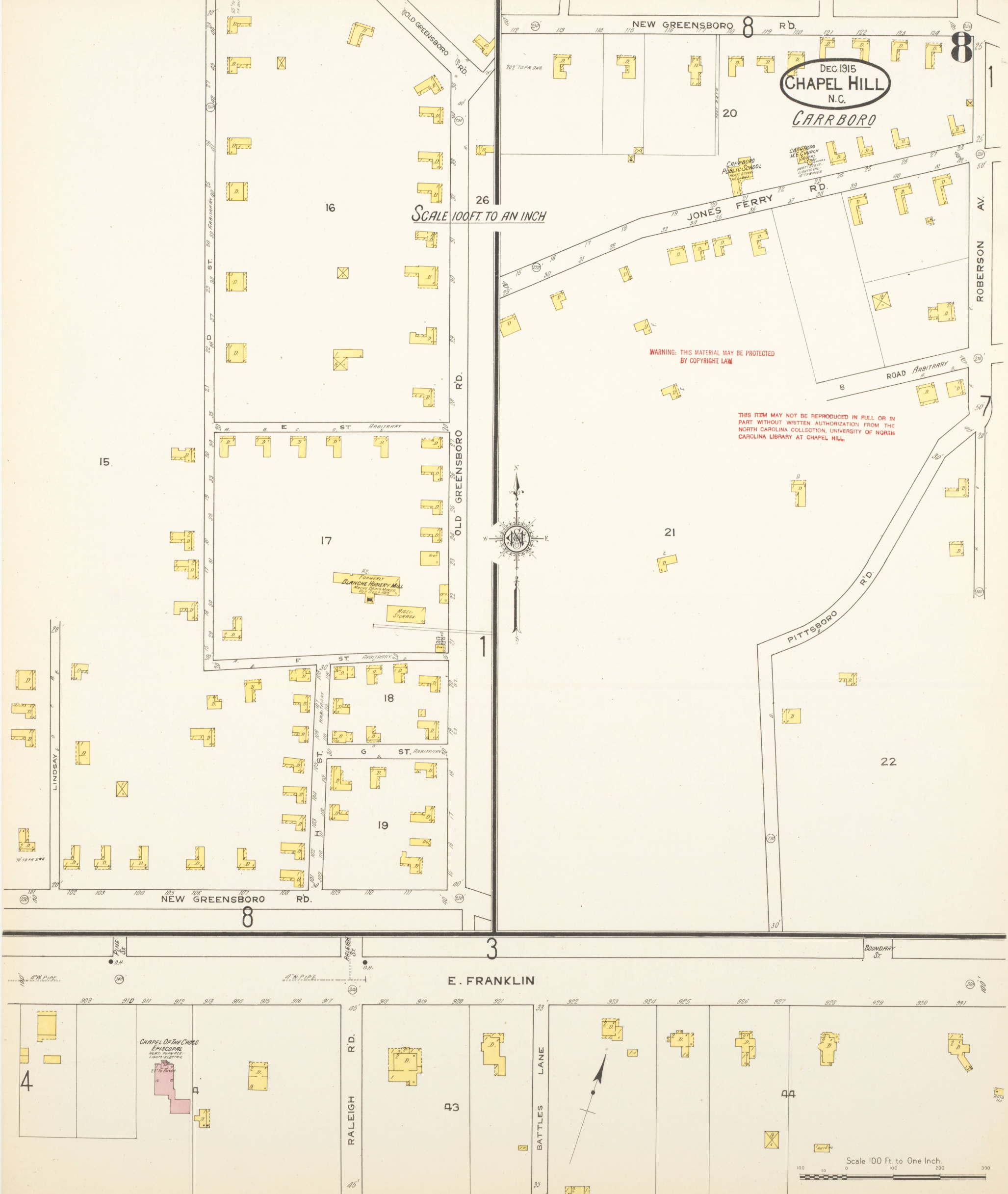
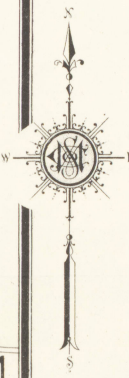


DEC. 1915
CHAPEL HILL
N.C.
CARRBORO

SCALE 100 FT. TO AN INCH

WARNING: THIS MATERIAL MAY BE PROTECTED
BY COPYRIGHT LAW

THIS ITEM MAY NOT BE REPRODUCED IN FULL OR IN
PART WITHOUT WRITTEN AUTHORIZATION FROM THE
NORTH CAROLINA COLLECTION, UNIVERSITY OF NORTH
CAROLINA LIBRARY AT CHAPEL HILL.



CHAPEL OF THE CROSS
EPISCOPAL
CHURCH
24 7/8 CORNER
LIGHTS ELECTRIC

RALEIGH
RD.

BATTLES
LANE

