

# Detroit Fire Department – Histories of Fire Stations

Last updated March 31, 2015

See “slim” version of this document that does NOT include photos: [www.legeros.com/detroit](http://www.legeros.com/detroit)

## Contents

- Introduction
- Engine Houses
- Other Fire Department Facilities
- Volunteer Fire Company Engine Houses
- Engine and Ladder Company List
- Photo Credits
- Sources

## Introduction

This document contains research on Detroit Fire Department facilities, as conducted by Mike Legeros in 2014 and 2015. This information is based on research conducted in 2009 and 2010, prior to his photograph tour of Detroit in 2010. See [those photos](#). This research was conducted in parallel to a project by Jeff Harkey and FDmaps.com, to map current and former Detroit fire houses. See [www.detroit.fdm.com](http://www.detroit.fdm.com).

## Engine Houses

This list contains one entry per unique structure. Houses that originated as engine-only or engine/ladder are listed first, followed by those that originated as ladder-only.

Eng	#	Lad	Status	#		Street	Built		Open	Closed		Notes
E01	1	L01	Gone	250	W	Larned (and Wayne)	1852		1860	1887		E1 organized 1860 as Lafayette No. 1. L1 organized and added 1864 as Rescue No. 1. Second building added for ladder in 1870. Demolished in 1887, replaced with new structure on same site. Equipped with 80-foot hose tower.
E01	2	L01	Gone	250	W	Larned (and Wayne) 1897 address 80-82 Larned. 1921 address 248-256 Larned.	1888			1928		New quarters for E1, L1. Demolished in 1928, replaced with new structure on same site.
E01	3	L01	Closed	250	W	Larned (and	1929			2013		New quarters for E1, L1.

Eng	#	Lad	Status	#		Street	Built		Open	Closed	Notes
						Wayne)					L1 disbanded 1958, reorganized 1965. L1 relocated between here and E. LaFayette & St. Antoine several times from 1965 and 1991. E1 relocated to 111 W. Montcalm in 1991. L1 relocated to E6 at Russell & Wilkins, 2000. DFD headquarters relocated to 1301 3 <sup>rd</sup> Street, to a new public safety center. 2013. Building sold in 2014 to developer, who plans to renovate the old station into a boutique hotel.
E02	1		Gone		E.	Larned and St. Antoine, NW corner	1861	by	1861	1875	E2 organized 1861 as Neptune No. 2. Building remodeled volunteer engine house. E02 relocated to new quarters, Hastings between Larned and E. Congress, 1875.  Demolished New quarters built on same site.
E02	2	L02	Gone	98-102		Hastings (between Larned and E. Congress)  1897 address 98-102 Hastings	1875			1918	New quarters for E2, L2. L2 relocated to E. Larned & Hastings in 1893. E2 relocated 1918 to Larned. Building sold to Dept of Street Railways in 1930. Demolished?
E02	3		Closed			Larned and St Antoine	1918			1940	New quarters for E2. E2 disbanded 1940.  Presently houses a legal clinic.
E03	1		Gone	12-14		Clifford (and Rowland)  1897 address 12-14 Clifford.	1861	by	1861	1926	E3 organized 1861 as Phoenix No. 3. E3 moved to W. Montcalm, 1926. Demolished.  Note: This site housed a volunteer engine house, built 1845, razed 1858.
E03, E01	2	L03	Active	111	W.	Montcalm (just west of Park)	1926			--	New quarters for E3, L3. E3 disbanded 1976. L3 disbanded May 1992. E1 added 1991.  Apparently built on the same site as original L3.
E04	1		Gone			Orchard (Elizabeth) between 5th and 6th	1865	by	1865	1873	E4 organized 1865 as K.C. Barker No. 4. E4 relocated 1897 to 18th St  Former quarters of Operative Engine No. 10, organized 1857.
E04	2		Closed			18th between W Lafayette and Howard, W side	1873			1897	New quarters for E4. Demolished, replaced with new structure on same site.  Equipped with 75-foot hose tower.  Not recorded by Woodard, but interpreted from Sanborn map images and a DFD photo with annotations to same effect.
E04	3		Closed			18th between W Lafayette and Howard, W side	1897			1976	New quarters for E4.  1897 street address between 61 and 71 18 <sup>th</sup> .

Eng	#	Lad	Status	#		Street	Built		Open	Closed		Notes
E05, E09	1		Gone	361		Larned (at Riopelle, NW corner)  1897 address 361 Larned.	1865	by	1865	1961		E5 organized 1865 as James A. Van Dyke No. 5. E5 relocated 1877 to Alexandrine & Cass. E9 organized and added 1880 as Chauncey Hubert No. 5. E9 relocated 1961 to 3737 E. LaFayetteville. Demolished
E05	2		Gone		W.	Alexandrine (just west of Cass, S side)	1877			1909		New quarters for E5. Demolished, replaced by new structure on same site.
E05	3	L20	Active	433	W.	Alexandrine (and Cass)  1921 address 435-451 Alexandrine  Prior address 91-99 Alexandrine	1909					New quarters for E5. L20 organized 1921. E05, L20 temporarily relocated Warren & Lawton from 1998 to 1999 E05 disbanded June 26, 2012.
E06	1		Gone	336-338		Russell (Waterloo Highway) (at High (Vernor), SE corner)  1897 address 336-338 Russell.	1868	by	1868	1903		E6 relocated Hastings & High, 1903. Demolished?  Fire department repair shop located on lot in 1897, address 378 High.  Equipped with 60-foot hose tower. Building expanded with quarters for second company.
E06	2		Gone	652		High (Vernor) (between Hastings and St. Antoine, S side)  1921 address 652 High	1903			1956		New quarters for E6. E6 relocated Russell & Wilkins, with L5, 1956. Demolished?
E06	3	L05, L10, L01	Active	3050		Russell (at Wilkins)	1956			--		New quarters for E6. L5 added 1956. L5 disbanded March 1976. L10 added 1992. L10 relocated to E18 at Mt. Elliott & Sylvester in 2000. L1 added 2000. E6 disbanded 1994, crew/app become E32. L1 disbanded June 26, 2012.
E07, E19	1	L06	Gone	74		Elmwood (and Fort), SE corner	1874	by	1874	1970		E7 organized 1874 as Union No. 7. L6 organized 1889. E7 moved to Concord & Jefferson in 1893. E19 added from 1923 to 1949. E7 re-added 1950 to 1970. E7, L6 relocated to LaFayette & Mt. Elliot in 1970. Demolished  1897 address 74 Elmwood

Eng	#	Lad	Status	#		Street	Built		Open	Closed		Notes
E07	2		Gone	165		Concord (north of Jefferson) 1910 address 165 Concord.	1893			1950		New quarters for E7. E7 relocated back to Elmwood & Fort in 1950. Demolished
E07, E09	3	L06	Active	3737	E.	Lafayette (at Mt. Elliott)	1970			--		New quarters for E7. E7 disbanded 1979. E9 moved here 1999. L6 temporarily relocated to E18 at Mt. Elliott & Sylvester in 1999.
E08	1		Gone	181-185		6 <sup>th</sup> and Baker (Bagley) , SW corner 1897 address 181 and 185 6 <sup>th</sup> .	1873	by	1873	1918	b y	E8 organized 1873. Demolished, replaced with new structure on same site. ? Second building added for ladder.
E08	2		Closed	1553		Baker (Bagley) and 6 <sup>th</sup> 1921 address 1553 Baker.	1918			1982		E8 relocated to 1625 W. LaFayette in 1982. Building is lawyer's office.
E08	3	L12	Closed	1625	W.	Lafayette (at 10th)	1908			2013		L12 organized 1908. L12 disbanded 1982. E08 added 1982. E08 disbanded June 26, 2012. <b>L12 status?</b>  Station closed in 2013. Offered for sale by city in 2013.
E09	2		Gone			Larned (at Riopelle), NW corner	1901			1964		New quarters for E9. E9 relocated 1964 to Lafayette and St. Antonine. Demolished 1965.
E09	1	SL01, L01	Gone		E.	Lafayette and St. Antoine	1964			1999		New quarters for E9. Housed Snorkel L1 from 1965 until disbanded 1981. Housed L1 from 1991 to 1999. E9 relocated to L6 at LaFayette & Mt. Elliott in 1999. Demolished, for Greektown Casino.
E10	1		Gone	2855		16 <sup>th</sup> at Bagg (Temple) 1897 address 493 16 <sup>th</sup> . 1921 address 2855 16 <sup>th</sup> .	1882		1883	1940		E10 organized 1883. E10 relocated to L4 at Vinewood. Demolished?
E11	1		Closed	801		Gratiot (and Erskine and Grandy) 1897 address 801	1883		1884	1975		E11 organized 1884. E11 disbanded 1975. Used as DFD museum 1977 to 1991. Purchased 2001 by Phoenix Organization of DFD

Eng	#	Lad	Status	#		Street	Built		Open	Closed		Notes
						Gratoit.						Originally equipped with 90-foot watch tower.
E12	1	L09	Gone	4074-4800		Grand River (at 16 <sup>th</sup> , just east of NW corner)  1897 address 1034 (E12) and 1028 (L09) Grand River.  1921 address 4074 (E12) and 4800 (L09) Grand River.	1886	by	1886	1928		E12 organized 1886. Second building erected on lot (not adjoined) for Ladder 9. L9 organized 1894. E12, L9 relocated Merrick & 12th, 1928.
E12	2	L09	Gone			Merrick and 12th	1928	by	1928	1947		New quarters for E12, L9. Station closed in 1947 after gasoline explosion that killed two firefighters and injured twelve in 1947. Companies relocated to temporary quarters at training center at Warren & Lawton, then permanent quarters at 2775 W. Warren. Demolished.
E12	3	L9	Active	2775	W.	Warren (and Lawton)	1948			--		New quarters for E12, L9. E12 disbanded 1976. L9 disbanded June 1992.
E13	1		Gone	1204		Russell and Ferry, SE corner  1897 address 1204 Russell	1887	by	1887	1951		E13 organized 1887. E13 relocated next door to temporary station circa 1897 during remodeling. E13 relocated to L11 at Milwaulkee & Riopelle. Demolished
E14	1		Gone	2981		Scotten (one block south of Michigan, W side)  1897 address 943 Scotten 1921 address 2981 Scotten.	1888	By	1888	1929		E14 organized 1884. E14 relocated Vinewood & W. Grand, 1929. Demolished.  Five-story steel training tower added in 1912, similar to training tower on Russell.
E15	1		Gone	729		Hubbard (just north of Fort, W side)  1897 address 217 Hubbard 1921 address 729 Hubbard.	1888	by	1888	1940		E15 organized 1888. E15 disbanded 1940. Demolished for Fisher Freeway.
E16 (FB)	1		Gone	Foot of		5th	1893			1928		Fireboat. E16 organized 1893. Relocated to Randolph St in 1928. Demolished?

Eng	#	Lad	Status	#		Street	Built		Open	Closed		Notes
E16 (FB)	2		Gone	Foot of		Randolph St.	1928	by	1928	1955		Fireboat. New quarters for E16. Relocated to 24th St in 1930. Returned 1928. Relocated again to 24th St in 1955. Demolished?
E16 (FB)	3		Active	Foot of		24th St. (Riverside Park)	1930	by	1930	--		Fireboat. New quarters for E16. Relocated to Randolph St. in 1950. Disbanded 1976. Reorganized 1979. Disbanded 1983. Reorganized as Fireboat 1 in 1984.
E17	1	L07	Gone	1321-1325		Cass and Amsterdam, NW corner  1897 address 1321-1325 Cass	1893	by	1893	1922		E17, L07 organized 1893. E17, L07 relocated to Burroughs & 2nd Ave., 1922. Building sold after closure. Demolished.
E17	2	L07	Active	6100		2nd Ave. (at Burroughs)	1922	by	1922	--		New quarters for E17, L07.
E18	1	L10	Closed	3812		Mt. Elliott (just south of Sylvester)  1897 address 926 Mt. Elliott	1893			2012		E18 organized 1893. L10 added 1936. L10 relocated to E6 at Russell & Wilkins in 1992. Housed L1 from 1999 to 2000. L10 re-added 2000. E18 disbanded July 2005. L10 disbanded June 26, 2012.  Station closed in 2012. Station offered for sale by city in 2013.  <b>DPL says historic photo is labeled E18. Front of building doesn't match modern photo. Was same renovated? Or is DPL label wrong?</b>
E19	1		Gone	2721	E.	Congress (between Chene and Joseph Campau)  1897 address 679 E. Congress. 1921 address 2721 E. Congress.	1894			1923		E19 organized 1894. E19 relocated to L6 at Elmwood and Fort.
E20	1		Gone			Gratiot and Baldwin  West side of Gratiot, just south of Baldwin	1894			1940		E20 organized 1894. E20 disbanded 1940. On Feb. 27, 1953 the second floor and attic of building was burned off, due to fire in adjoining building. Demolished?

Eng	#	Lad	Status	#		Street	Built		Open	Closed		Notes
E20	2		Gone			Gratiot and Connor (Detroit City Airport)	1961	by	1961	1989		E20 reorganized at new quarters. E20 relocated Lynch Rd 1989. Also E20X from 1969 to 1976. Demolished?
E20	3		Closed			Lynch east of Erwin (Detroit City Airport)	1989			2012	?	Detroit City Airport New quarters for E20. E20 disbanded June 26, 2012.
E21	1		Gone	701		Lincoln and Piquette (Marquette)  1897 address 701 Lincoln.	1896			1926		E21 organized 1896. E21 relocated 10325 Linwood in 1926. Demolished?
E21	2	L28	Closed	10325		Linwood (and Calvert)	1926			2012		L28 organized, added 1927. E21 closed June 26, 2012.
E22	1		Closed	6138		Michigan, (between Welch (Military) and Hammond (Joe), N side)  1897 address 1736 Michigan. 1924 address 6138 Michigan.	1896			1983		E22 organized 1896. E22 disbanded 1983.
E23	1		Active	1818	E.	Grand Blvd. (and Moran), NW corner  1915 address 1820-1822 Grand.	1899			--		E23 organized 1899. E23 closed June 26, 2012.
E24, E35	1	L15, L11	Active	111		Kenilworth (east of Woodward)  1910 address 59 Mott.	1899			--		E24 organized 1894. E24 disbanded 1940. E35 added 1940. L15 disbanded June 1980. L11 added 1982 L11 disbanded June 1992.
E25 (FB)	1		Closed	Foot		McDougall	1901			1940		Fireboat. E25 disbanded 1940. Demolished.
E26	1		Gone	446		Crane (at Brinket, NE corner)  1910 address 446 Crane	1901			1925		E26 organized 1901. Destroyed by two-alarm fire in 1925, rebuilt as 2200 Crane. Rebuilt on same site.  Equipped with 70 foot hose tower.

Eng	#	Lad	Status	#		Street	Built		Open	Closed		Notes
E26	2	L14	Active	2200		Crane (and Brinket, NE corner) Prior address 446 Crane.	1925		1926	--		L14 added 1939. E26 disbanded July 2005.
E27	1		Closed	1467		Junction (at Rogers, NW corner) 1923 address 1467 Rogers.	1902			1983		E27 organized 1902. E27 disbanded 1979. E27 reorganized 1983. E27 relocated 2006 to 4700 Fort.  Originally equipped with 65 foot hose tower. Building offered for sale by city in 2013.
E27			Active	4700		Fort (at Morrell)	2006	By	2006	--		E27 new quarters.
E28, E13	1	L11	Closed	1475-1485	E.	Milwaukee (at Riopelle, NW corner) 1921 address 1475-1485 Milwaukee.	1905			1982		E28 organized 1905. L11 organized 1906. disbanded 1948. E13 added 1951, disbanded 1976. L11 relocated to E35 at Kenilworth & Woodward in 1982
E29	1		Active	7600	W.	Jefferson (and Solvay) 1910 address 2010 Jefferson.	1907			--		E29 organized 1907.
E30	1		Gone	3106		Rivard (at Livingstone, NE corner) 1921 address 3106 Rivard	1918			1940		E30 disbanded 1940. Demolished?
E30	2		Active	16543		Meyers (and Florence)	1951			--		E30 reorganized at new quarters.
E31	1		Closed	1697	W.	Grand Blvd. (and Cobb Place) 1910 address 1693 Grand	1909			2012		E31 organized 1909. E31 disbanded June 26, 2012.
E32	1		Active	11740	E.	Jefferson (and Hart) 1916 address 2628 Jefferson	1909			--		E32 organized 1909. E32 disbanded 1992. E32 reorganized 1994.
E33	1	L13	Active	1041		Lawndale (and LaFayette)	1912			--		L13 added 1932
E34	1		Active	6535		Livernois (between Walton	1918			--		E34 organized 1918.



Eng	#	Lad	Status	#	Street	Built		Open	Closed		Notes
					and Alden, W side ) 1924 address 6345 Livernois.						
E35	1		Gone		Russell and E. Grand Blvd.	1911	by	1911	1914		E35 organized 1911. E35 relocated to Beaubien & Mt. Vernon in 1914. Demolished?
E35	2		Closed		Mt. Vernon and Beaubien (SW corner)	1914			1940		New quarters for E35. E35 relocated to Kenilworth, old E24.
E36	1	L16	Closed	6900	Miller (at Helen)	1918			2012	?	E36 organized 1918. L16 organized 1919. E36 disbanded 1982, crew and apparatus become 50. L16 disbanded June 26, 2012. Offered for sale by city in 2013.
E37	1		Closed	2820	Central (and Dix)	1916			2005		E37 organized 1916. E37 disbanded 1976. E37 reorganized 1978. E37 disbanded July 2005. Originally equipped with 60 foot hose tower.
E38	1	L29	Closed	1113	Coplin (and Jefferson)  1916 address 659 Coplin. 1929 address 1113 Coplin.	1915			2012	?	E38 organized 1915. L29 organized, added 1927. E38 disbanded June 26, 2012. <b>L29 status?</b>  Originally equipped with 60 foot hose tower.  Station closed in 2012 (?). Station offered for sale by city in 2013.
E39	1		Gone	1405	Taylor (at Bryan, SW corner)  1925 address 1405 Taylor.	1916			1983		E39 organized 1916. Addition for deputy chief in 1928. E39 relocated to 14th & Blaine in 1983. Demolished?
E39	2		Active	8700	14th (and Blaine)	1983			--		New quarters for E39.
E40	1	L17	Closed	14041	12th (Rosa Parks Blvd.) (and LaBelle)  1925 address 14007 12 <sup>th</sup> .	1919			1980		E40 organized 1919. L17 organized, added 1920. E40, L17 relocated 1980 to Dexter & Ewald.
E40	2	L17	Active	13939	Dexter (and Ewald Cir)	1980			--		New quarters for E40, L17. Ladder 17 disbanded 1998, reorganized 1999.
E41	1		Active	5000	Rohns (and Warren)	1916			--		E41 organized 1916.

Eng	#	Lad	Status	#		Street	Built		Open	Closed		Notes
E42	1		Gone	8984		Grand River and Beverly Ct. 1924 address 8984 Grand River.	1917			1927		E42 organized 1917. E42 relocated 1927 to L21 at Livernois & Chicago. Building sold. Demolished?  Equipped with four-story hose tower.
E43	1		Gone			Davison and Goddard (NW corner).	1921			1983		E43 organized 1921. E43 disbanded June 1983.
E44	1	L18	Active	21	W.	Seven Mile Rd. (and John R.) 1950 address 31 Seven Mile.	1921			--		E44, L18 organized 1921. E44 disbanded 1976, reorganized 1978.
E45	1		Gone			St. Jean between Mack and Sylvester, E side.	1922			1983		E45 organized 1922. E45 disbanded June 1983. Demolished
E46	1		Active	10101		Knodell (and Grace)	1921			--		E46 organized 1921.
E47	1	L30	Active	17475		Mt. Elliott (and Davidson)	1921		1922	--		E47 organized 1922. Additional building added 1928 to house L30. E47 disbanded June 26, 2012.
E48	1		Closed	644	S	Bayside (just east of Saunders, N side) 1950 address 644 Bayside. Prior address 11344 Bayside.	1924			1980		E48 organized 1924. E48 relocated to Fort & Downing in 1980. Damaged by fire in recent years (?).
E48	2		Active	2300	S.	Fort (and Downing)	1980			--		New quarters for E48.
E49	1		Closed	12515		Grand River (and Manor) 1926 address 12511 Grand River.	1924			2012		E49 organized 1924. E49 disbanded June 26, 2012.  Building offered for sale by city in 2013.
E50	1	L23	Active	12985		Houston Whittier (east of Gratiot) 1929 address 12975 Houston.	1925			--		E50, L23 organized 1925. E50 disbanded 1979, reorganized 1980.

Eng	#	Lad	Status	#		Street	Built		Open	Closed		Notes
E51	1	L24	Closed	18326		Livernois (and Curtis)	1926			2013		E51, L24 organized 1926. L24 disbanded June 26, 2012. E51 disbanded 2013.
E52	1	L31	Active	5029		Manistique (north of E. Warren, W side)	1926			--		E52 organized 1926. Addition in 1942. L31 organized, added 1942. Building expanded with second section for ladder.
E53	1	L25	Active	15127		Greenfield (and Fenkell) 1938 address 15121 Greenfield.	1926			--		E53, L26 organized 1926.
E54	1	L26	Closed	18750		Harold (at Allen) (Argus and Rockdale) 1926 address 18750 Harold.	1921		1926	1939		E54, L26 organized 1926. E54, L26 relocated to Trinity & Grand River in 1939. Old Redford Town Hall.
E54	2	L26	Active	16825		Trinity (and Grand River)	1938			--		New quarters for E54, L26
E55	1	L27	Active	18140		Joy Rd. (and Ashton)	1927			--		E55 organized 1927. L27 organized, added 1928.
E56	1		Active	18601		Ryan Rd. (and Hildale, NW corner) 1933 address 18605 Ryan.	1927			--		E56 organized 1927.
E57	1		Active	13960		Burt Rd. (and Schoolcraft)	1927			--		E57 organized 1927.
E58	1		Active	10800		Whittier (and Lakepointe)	1928			--		E58 organized 1928.
E59	1		Active	17800		Curtis (and Fenmore)	1930			--		E59 organized 1930.
E60	1		Active	19701		Hoover (and Manning)	1931		1935	--		E60 organized 1935. Due to depression, house was not occupied after construction for four years.
	1	L02	Gone			Larned at Beaubien	1871	by	1871	1875		L2 organized 1871. L2 relocated to E2 at Hastings & E. Congress in 1875.  Before operating as engine house, building was old Scott Armory.
	2	L02	Gone	639	E.	Larned (between Hastings and St. Antione)	1885		1920	1951		New quarters for alarm office in 1885. Water Tower 1 added 1893. Fire alarm office relocated 1920 to Hastings.

Eng	#	Lad	Status	#		Street	Built		Open	Closed		Notes
						1897 address 189 E. Larned. 1922 address 639 E. Larned.						L2 added 1920 (alt. year 1918). L2 disbanded 1951. Demolished 1952. (Believe historical citation of demolished 1942 is a typo.)
	1	L03	Gone	111	W.	Montcalm (just west of Park) 1921 address 111 W. Montcalm. Prior address 51 W. Moncalm.	1878		1881	1926		L3 organized 1881 as Alert No. 3. Demolished, replaced by new building on same site in 1926. See E03.  Woodard recorded L3 as organized on Montcalm east of Park in 1881, then relocating west of Park in 1926.  Sanborn Maps in 1884 show L3 on site west park.
	1	L04	Gone			20 <sup>th</sup> between Michigan and Rose, E side  1897 address between 404 and 388 20 <sup>th</sup> .	1884			1910	b y	L4 organized 1884. L4 relocated Vinewood & West Grand, 1910. Demolished, for railroad viaduct  <b>Was a newer structure constructed on same lot between 1887 and 1897?</b>
E14, E10	2	L04	Closed.	3396		Vinewood (and W. Grand, SE corner)	1910			2012		New quarters for L4. E14 added 1929. E14 disbanded 1940. E10 added in 1940. L4 disbanded 1976, reorganized 1978. L4 disbanded July 2005. E10 disbanded June 26, 2012.  Building offered for sale by city in 2013.
	1	L05	Closed	3400		Russell (at Calhoun, AKA Erskine)  1897 address 570 Russell.	1889			1956		L5 organized 1889. L5 relocated to E6 at Russell & Wilkins, 1956.
	1	L08	Gone	3907		Dix (at Vinewood) 1921 address 287 Dix.  Prior address 287 Dix.	1893			1928		L8 organized 1893. Relocated to E27 at Junction & Rogers, 1928. Demolished?
	1	L10	Gone	7401		Mack (at Sheridan, NE corner)  1951 address 7401 Mack	1898			1936		L10 organized 1898. Relocated to E18 at Mt. Elliott & Sylvester in 1936. Demolished?
	1	L13	Gone	6750		Fort (just east of Lewerenz, N side)  1923 address 6750 Fort	1909			1932		L13 organized 1909. L13 relocated to E33 at LaFayette & Lawndale in 1932.

Eng	#	Lad	Status	#		Street	Built		Open	Closed		Notes
	1	L14	Closed	9900		Jefferson (and Pennsylvania) 1914 address 2118 Jefferson. 1929 address 9900 Jefferson	1912?			1939		L14 organized 1912. L14 relocated to E26 at Crane & Brinket in 1939. Building used by pottery company.
	1	L15	Gone	2164		Woodward (just north of Westminister, E side of street) 1915 address 2164 Westminister.	1911			1947		L15 organized 1911. L15 relocated to E35 on Kenilworth in 1947.
	1	L19	Active	10700		Shoemaker (and French) 1929 address 10645 Shoemaker.	1921			--		L19 organized 1921
E42	1	L21	Active	6324	W.	Chicago (and Livernois) 1926 address 6330 W. Chicago.	1921			--		L21 organized 1921. E42 added 1927, with additional building constructed. L21 disbanded 2012 (?).
	1	L22	Active	6830		McGraw (and Martin)	1922			--		L22 organized 1922

### Other Fire Department Facilities

Status	#		Street	Built		Opened	Closed		Notes
Gone	250	W	Larned (and Wayne)	1870					DFD headquarters. See E01, L01. Created with addition to E01 quarters. Housed steam engine, hose company, ladder company, supply wagon, chief engineer's buggy, fire alarm room, Superintendent, Chief Engineers, Secretary, Commissioners.  Fire alarm office relocated 1885 to Larned between St. Antoine and Hastings.
Gone	250	W	Larned (and Wayne)	1888					DFD headquarters. See E01, L01.
Closed	250	W	Larned (and Wayne)	1929					DFD headquarters. See E01, L01. Housed in 1929 were E1, L1, High Pressure 1, Water Tower 1, Chief of Dept, Asst. Chief, Deputy Chief 1, Bat Chief 1, and Fire Marshal car.

Active	1301		3 <sup>rd</sup>	1974	?	2013	--	DFD headquarters, at Detroit Public Safety Center. Facility previously served as MGM Grand Detroit temporary casino, and prior as a computing center for Internal Revenue Service.
Gone		E.	Hastings and Larned	1885			1893	New quarters for fire alarm office. Alarm office relocated 1893. See L2 at E. Hastings.
Gone	10		Howard (just south of Cass)	1897	By			Detroit Fire Notification Co. <b>Was this DFD? Or a private firm?</b>
Gone	1923		Hastings (at Macomb)  1951 address 1923 Hastings.	1920			1985	New quarters for fire alarm office. Fire alarm system discontinued, Central Fire Alarm Office closed, and dispatch duties transferred to police headquarters at 1300 Beaubien, where new computer system was used to alert fire companies.
Gone?	230-234		Jefferson (and Randolph)	1853			1887	Fireman's Hall. Building sold to water department in 1887. Operated by the Fire Department Association organization, which dissolved after the sale.
Gone	Foot		Randolph St.	1922			1956	? High Pressure Pumping Station System discontinued in 1956.
Gone?	378		High 1897 address 378 High	1894			1915	? Heavy repair and paint shop. Located behind Engine 6.
Gone?	670		High 1921 address is 670 High	1921	By			Water supply department, storage of pip and hydrants. Repair shop on second floor. Adjoined Engine 6.
Active	2775		Warren (at Lawston, NE corner) 1950 address 2775 Warren	1930				Training Center.

### Repair Shop on Russell Street

3400 Russell (at Calhoun)

Training stable added 1888.

Repair shop added 1890.

Horse hospital added by 1897.

Wooden training tower added 1907.

Five-story steel training tower added 1912.

First repair shop added 1915.

Main repair shop building added 1917.

Garage addition 1923.

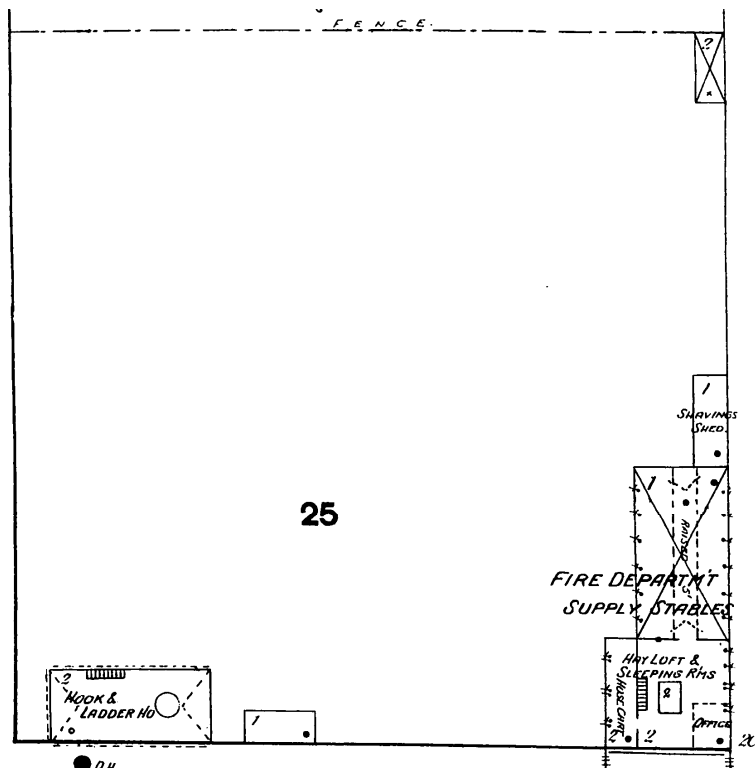
Blacksmith shop 1924.

Repair shop addition 1934.

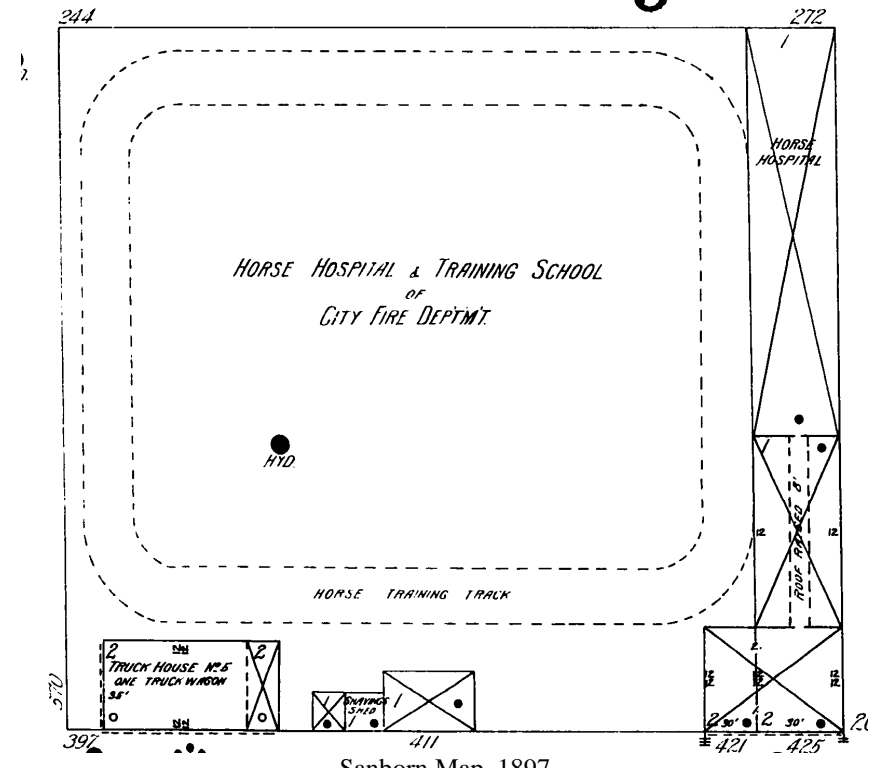
Ladder 5 also housed on same lot.



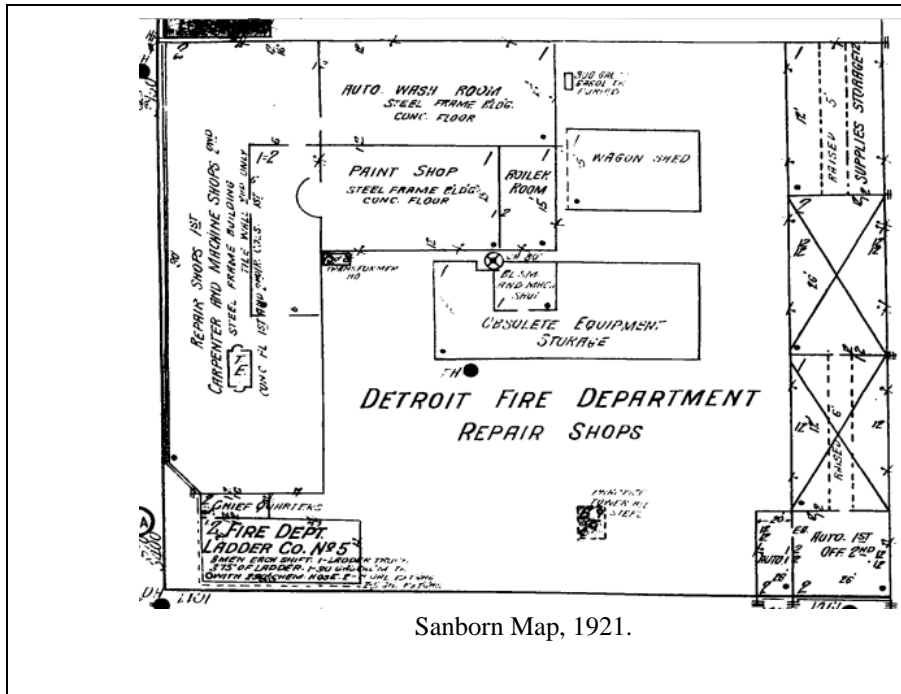
MJL photo.



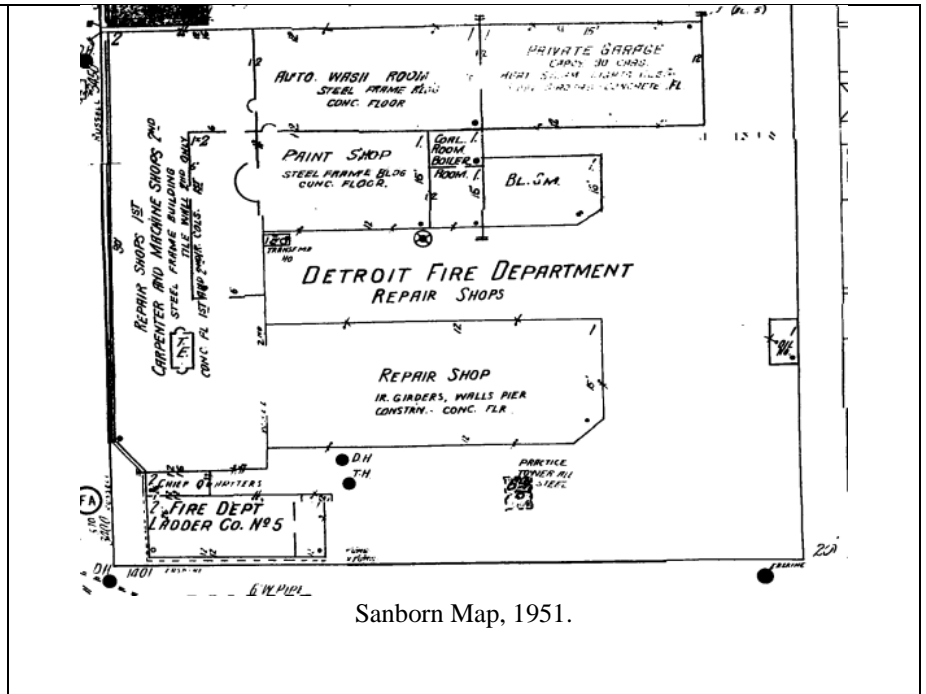
Sanborn Map, 1884



Sanborn Map, 1897



Sanborn Map, 1921.



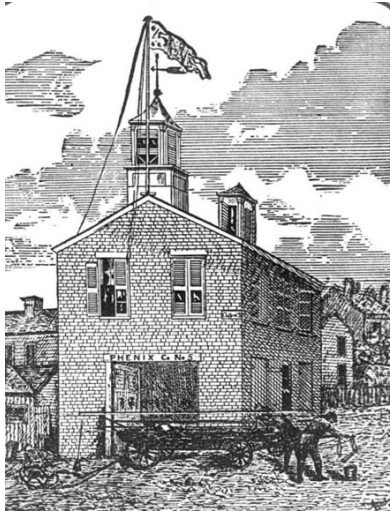

Sanborn Map, 1951.

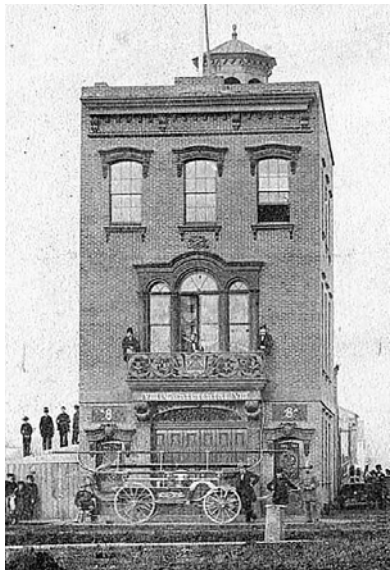
### Volunteer Fire Company Engine Houses

Still compiling, but included:

Company	Address	Date	Notes	Photo
Protection No. 1	Bates and Larned	First engine house - Built 1823.		
Protection No. 1	Bates and Larned	Built 1828 on same site.		
Protection No. 1	Wayne at Larned	Built 1856. With sixty-five foot watch tower. Adjoined Rescue Hook & Ladder quarters		
Fireman's Hall	Bates and Larned	Built 1939, also housed Protection No. 1, Hurlburt Hose No. 1, Rescue Hook & Ladder No. 1.		
Fireman's Hall	Jefferson and Randolph, SW corner	Built 1853.		
Eagle No. 2	Fort and Griswold	Built 1827.		
Eagle No. 2	Fort and Griswold	Built 1836, on same site.		



Engine No. 2	Larned & St. Antoine	Built 1857, new quarters.		
Wolverine No. 3	Randolph and Atwater	Organized 1830.		
Lafayette No. 4	Wayne and Congress	Organized 1834.		
Phoenix No. 5 Later named Washington No. 5	Clifford & Griswold	Built 1845. Razed 1858		 <p>DFN photo.</p>
Michigan No. 6 Later named Alert Later named Rough and Ready Later named Neptune Engine	Larned between St. Antoine and Hastings	Organized 1846.	<p>Pictured photo is described by DPL as “View of Detroit Fire Department old engine house, on Larned St. between St. Antoine and Hastings. Small building on cobblestone street. Handwritten on back: ‘Old engine house, 1881, Larned St. bet. Antoine &amp; Hastings.’”</p> <p>Perhaps located at 189 Larned, where alarm office was built in 1885? Thus why it’s seemingly not present on 1884 Sanborn Map.</p> <p>Note: DFD 2007 book depicts building a L2 original location. However, L2 originated at Old Scott Armory, at Larned and Beaubien, which is about a block away.</p>	 <p>DPL photo.</p>
Union Engine No. 7	Riopelle and Larned, NW corner	Organized 1849.		

Mechanics No. 8 Later named Continental	Third street, E side, between Lafayette and Howard	Organized 1849.		
Detroit Engine No. 9	Gratiot between Beaubien and St. Antoine	Organized 1856.		
Operative Engine No. 10	Orchard (Elizabeth) between 5 <sup>th</sup> and 6 <sup>th</sup>	Organized 1857.		
Hamtramck Spouters No. 11	E. Jefferson and St. Aubin	Organized 1857.		
Woodbridge No. 12	Fort and Thompson (12 <sup>th</sup> ).			
Relief Hook & Ladder No. 2	Old Washington Market building at Washington and Larned.	Organized 1850. Company merged with Rescue Hook & Ladder No. 1, which occupied the Relief building.		
First watch tower	First Presbyterian Church Church steeple, Woodward & Larned	Established 1847.		

### Engine and Ladder Company List

As of January 1, 2015, the following engine and ladder companies are active (shaded in green):

Company	Organized	Disbanded	Reorganized
---------	-----------	-----------	-------------

E-1	1860	1957, 1975	1957, 1978
E-2	1861	1940	
E-3	1861	1976	
E-4	1865	1976	
E-5	1865	2012	
E-6	1868	1994	
E-7	1874	1976, 1979	1978
E-8	1873	2012	
E-9	1880		
E-10	1883	2012	
E-11	1884	1976	
E-12	1886	1976	
E-13	1887	1976	
E-14	1888	1940	
E-15	1888	1940	
E-16	1893	1976, 1983	1979
E-17	1893		
E-18	1893	2005	
E-19	1894	1949	
E-20	1894	1940, 2012	1961
E-21	1896	2012	
E-22	1896	1983	
E-23	1899	2012	

E-24	1894	1940	
E-25	1901	1940	
E-26	1901	2005	
E-27	1902	1979	1983
E-28	1905	1948	
E-29	1907		
E-30	1918	1940	1951
E-31	1909	2012	
E-32	1909	1992, 2013	1994
E-33	1912		
E-34	1918		
E-35	1911		
E-36	1918	1982	
E-37	1916	1976, 2005	1978
E-38	1915	2012	
E-39	1916		
E-40	1919		
E-41	1916		
E-42	1917		
E-43	1921	1983	
E-44	1921	1976	1978
E-45	1922	1983	
E-46	1921		

E-47	1922	2012	
E-48	1924		
E-49	1924	2012	
E-50	1925	1979	1982
E-51	1926	2013	
E-52	1926		
E-53	1926		
E-54	1926		
E-55	1927		
E-56	1927		
E-57	1927		
E-58	1928		
E-59	1930		
E-60	1935		
L-1	1864	1958, 2012	1964
L-2	1871	1951	
L-3	1881	1992	
L-4	1894	1976, 2005	1978
L-5	1889	1976	
L-6	1889		
L-7	1893		
L-8	1893		
L-9	1894	1992	

L-10	1898	2012	
L-11	1906	1992	
L-12	1908	1982	
L-13	1909	2013	
L-14	1912		
L-15	1911	1980	
L-16	1919	2012	
L-17	1920	1998	1999
L-18	1921		
L-19	1921	2013	
L-20	1921		
L-21	1921	2013	
L-22	1922		
L-23	1925		
L-24	1926	2012	
L-25	1926		
L-26	1926		
L-27	1928		
L-28	1927	2013	
L-29	1927	2005	
L-30	1928	2013	
L-31	1942		

Chart created by Jeff Harkey.

### Photo Credits

- DD – Discuss Detroit thread (see Sources below)
- DFD 2007 - *Detroit Fire Department 1907-2007*, published by M.T. Publishing.
- DFD HR – *Detroit Fire Department Historical Record – 1825 to 1977*.
- DFN – DetroitFirefighters.net (see Sources below)
- DPL – Detroit Public Library (see Sources below)
- MJL – Mike Legeros (see [more photos](#))

## Sources

### Primary

- Company histories by Clarence Woodard. Copy posted to [www.legeros.com/history/detroit](http://www.legeros.com/history/detroit).
- Company and station histories by Clarence Woodard and Richard Lancaster. Copy posted to [www.legeros.com/history/detroit](http://www.legeros.com/history/detroit).
- *Detroit Fire Department 1907-2007*, presented by Detroit Firemen's Fund Association, M.T. Publishing, 2007.
- *Detroit Fire Department Apparatus History – A Pictorial History of the Fire Apparatus That Served Detroit Michigan*, by Matthew Lee, self-published, 1989.
- *Detroit Fire Historical Record – 1825 to 1977*, presented by Detroit Firemen's Fund Association, Taylor Publishing, 1977 (first printing), 2005 (second printing).
- Detroit Firefighters web site, photos and other information, [www.detroitfirefighters.net](http://www.detroitfirefighters.net).
- Detroit Public Library Digital Collections, <http://digitalcollections.detroitpubliclibrary.org>.
- Discuss Detroit firehouse thread started 2006: <http://www.atdetroit.net/forum/messages/5/80015.html?1173935391>
- Discuss Detroit firehouse thread started 2008: <http://www.detroityes.com/mb/showthread.php?93-Firehouses>
- FDmaps.com research by Jeff Harkey in 2014 and 2015, <http://www.detroit.fdmmaps.com>
- Sanborn Fire Insurance Maps, 1884 to 1950.

### Secondary

Numerous secondary sources were used, including:

- Abandoned, Historic Fire Stations Now Up For Bid in Detroit – Detroit Curbed – April 26, 2013 - <http://detroit.curbed.com/archives/2013/04/eight-abandoned-historic-fire-stations-now-up-for-bid-in-detroit.php>.
- Detroit Fire Department Wikipedia page, with information on closed companies - [http://en.wikipedia.org/wiki/Detroit\\_Fire\\_Department](http://en.wikipedia.org/wiki/Detroit_Fire_Department)

### Acknowledgements

Thanks to Wayne Isken (retired DFD), John Randall (retired DFD) who operates <http://detroitfirefighters.net>, and DFD Historian Richard V. Lancaster (Retired FEO E-32).