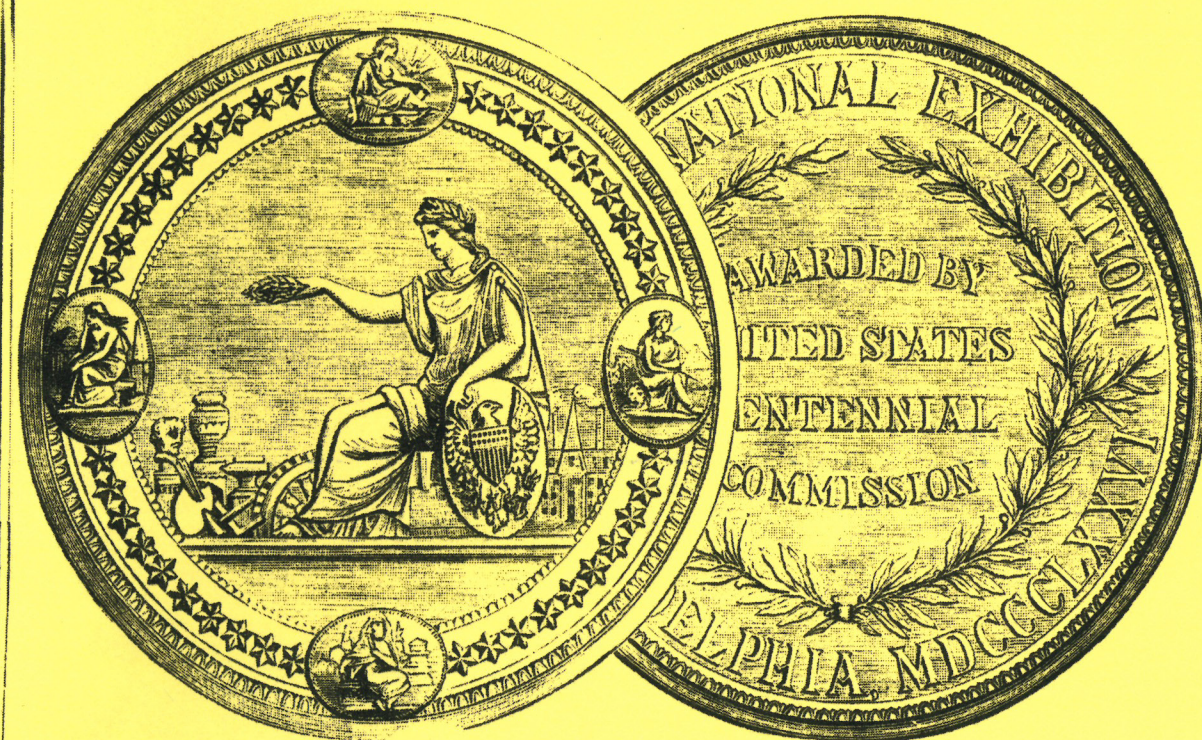
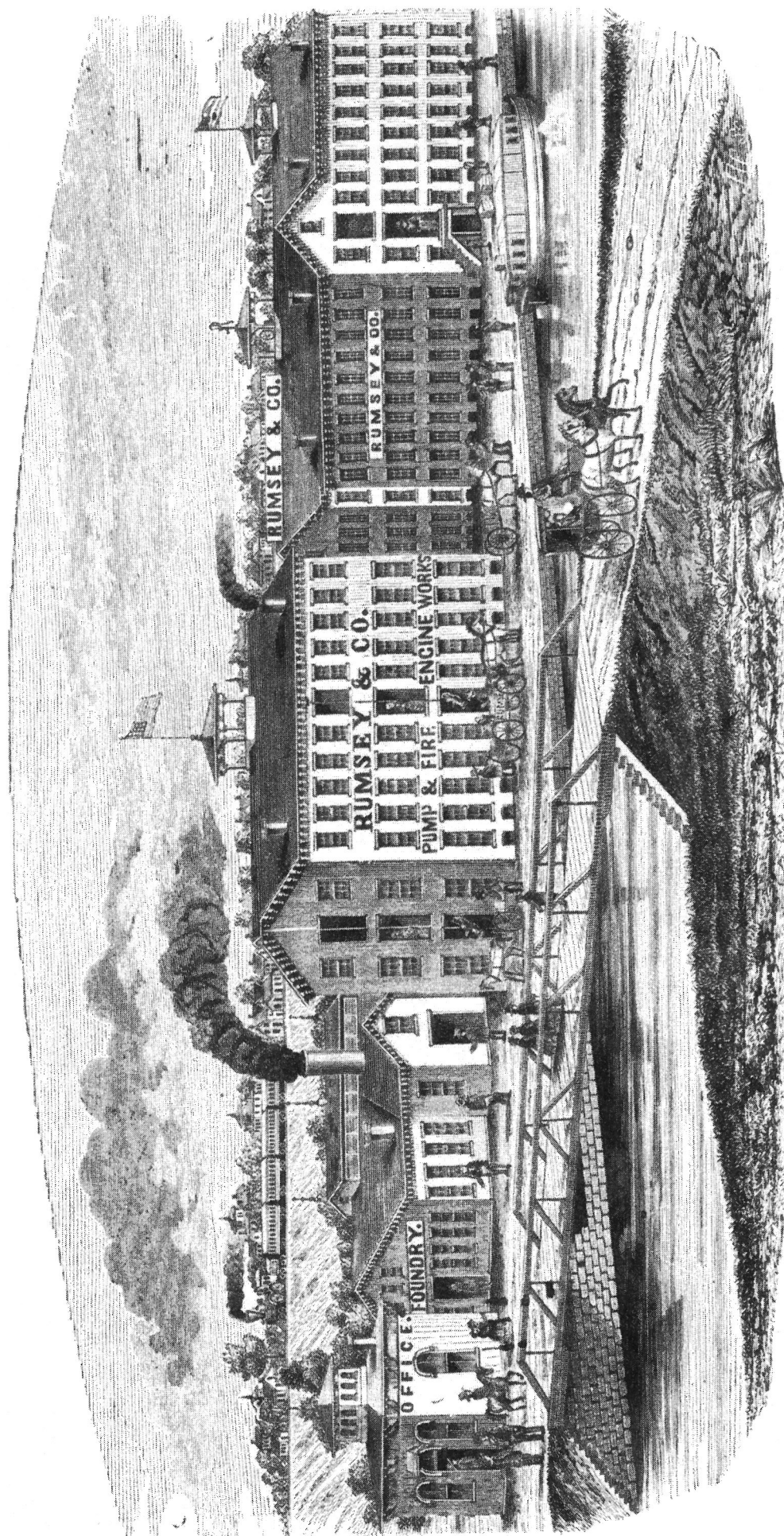


**FIRE ENGINES,
HOSE CARRIAGES, HOSE CARTS,
HOOK AND LADDER TRUCKS,
HOSE AND FIRE DEPARTMENT SUPPLIES.**



(WE RECEIVED THE HIGHEST AWARD GIVEN BY THE CENTENNIAL COMMISSION ON PUMPS AND HAND FIRE ENGINES.)

**RUMSEY & COMPANY
LIMITED,
SENECA FALLS, N. Y., U. S. A.
1878.**



RUMSEY & CO.'S PUMP AND FIRE ENGINE WORKS, SENECA FALLS, N. Y.

1878 FIRE ENGINE CATALOGUE,

The increase of loss by fire during the past year over former years has been enormous. Every town and village without proper protection should lose no time in providing themselves with the means to subdue conflagrations at home and to render assistance to neighboring towns which may have been so forgetful or negligent as to be without the necessary means to extinguish fires. Delays are dangerous, and much property and loss of life may be spared by acting in time.

Many towns and villages, and even cities, being in no condition to stand the heavy expense (by taxation or otherwise) incurred in the purchase of a steam fire engine, which would amount to thousands of dollars, can have their wants supplied by purchasing a good Hand Fire Engine. Such we are making, and with a practical experience of over thirty years in the manufacture of Fire Engines we feel confident that for durability, style, quality, workmanship and variety, our engines are unequalled by any made in the world.

We have added largely within the past year to our already large assortment, and have made many improvements over the engines which a decade since were considered stylish and hard to beat, but which are now considered clumsy and too heavy to handle.

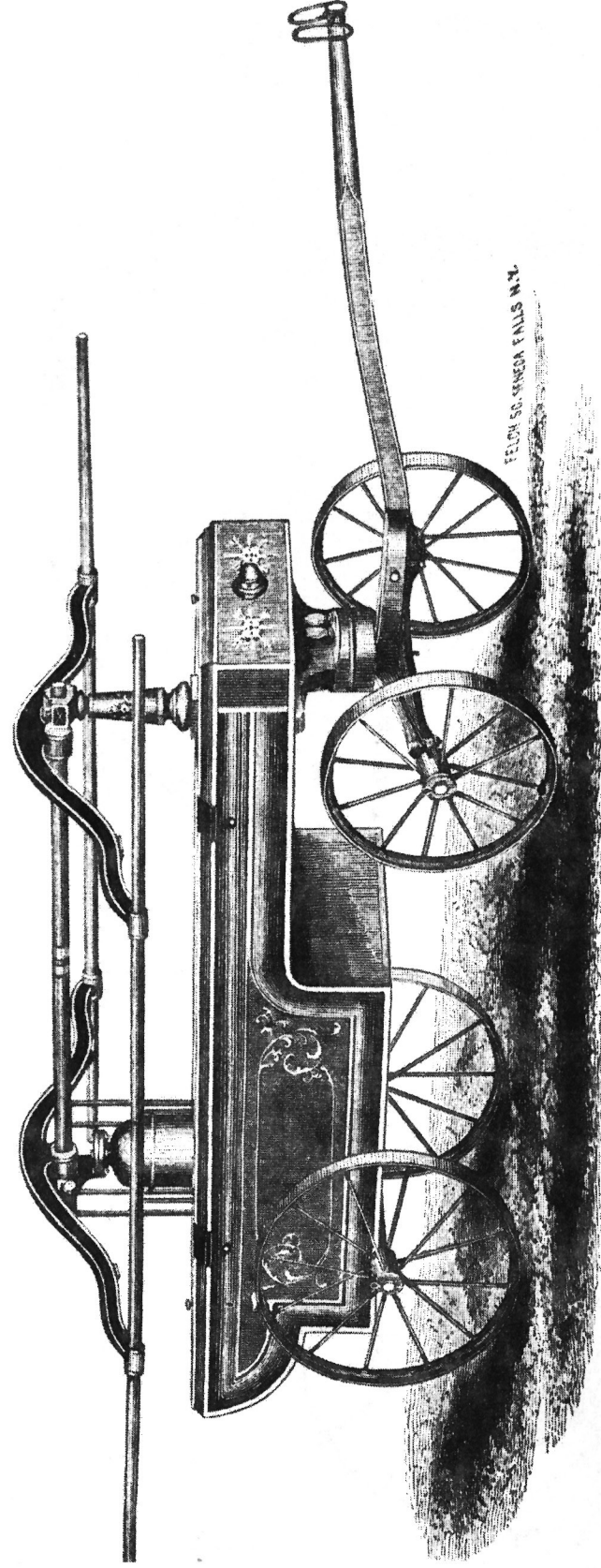
We are now making and are constantly shipping Fire Engines of all sizes and prices, Hose Carriages, Hose Carts, Trumpets, Bells, Lamps, Discharge Pipes, Buckets, Hose Couplings, &c., &c.

We are also prepared to furnish Hose for Fire Departments, of Linen, Cotton, Leather or Rubber, at the lowest market rate, and in any quantity. All our work is warranted to be first class in every particular, and purchasers may be assured of receiving fair and honorable treatment when dealing with us.

RUMSEY & CO., Limited,
SENECA FALLS, N. Y.

BOY'S FIRE ENGINE.

Fig. 244.



This Engine is light and powerful, is easily operated and can be used to good advantage at fires, especially in small Villages. The brakes or arms are stationary and do not fold. It is painted and ornamented in good style, has Brass Cylinders $4\frac{1}{2}$ inches in diameter: length of stroke 7 inches, wheels 24 and 30 inches in diameter, room on brakes for ten men, will throw about 100 feet, is fitted for attaching suction hose. Spokes and Felloes are made of best of timber. Price, net.....\$275.00

We furnish Hose of all kinds at the lowest market rates.

VILLAGE FIRE ENGINE,
With Folding Brakes. Arranged for Attaching Suction Hose. Room on Brakes for 12 or 14 Men.
Fig. 245.

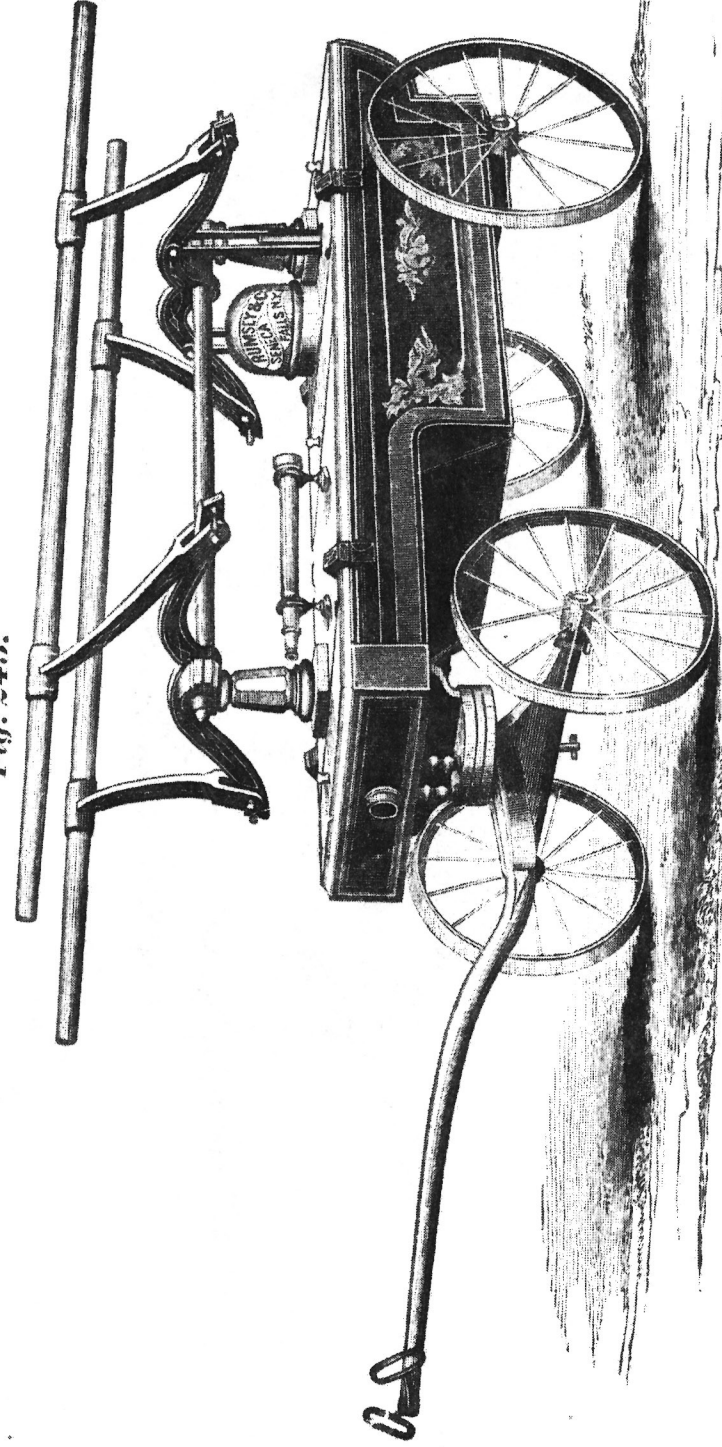


Fig. 245 represents our Village Fire Engine, arranged with Folding Brakes; has Brass Cylinders $4\frac{1}{2}$ inches by 7 inch stroke. Has Wrought Iron Axles, built in the best manner throughout, and painted in good style; furnished with 25 feet of Leading Hose and Brass Discharge Pipe, all ready for use. Room on the brakes for 12 or 14 men. Will throw 100 feet to 130 feet. It is a very nice, cheap Fire Engine for villages, country towns, &c. Price, net.....\$325.00
We furnish Suction and Leading Hose at the very lowest market prices. Spokes and Felloes are made of best of Timber. Arranged for attaching Suction Hose, same as Fig. 246.

CRANE NECK STYLE FIRE ENGINE--WITH FOLDING BRAKES. *Fig. 248.*

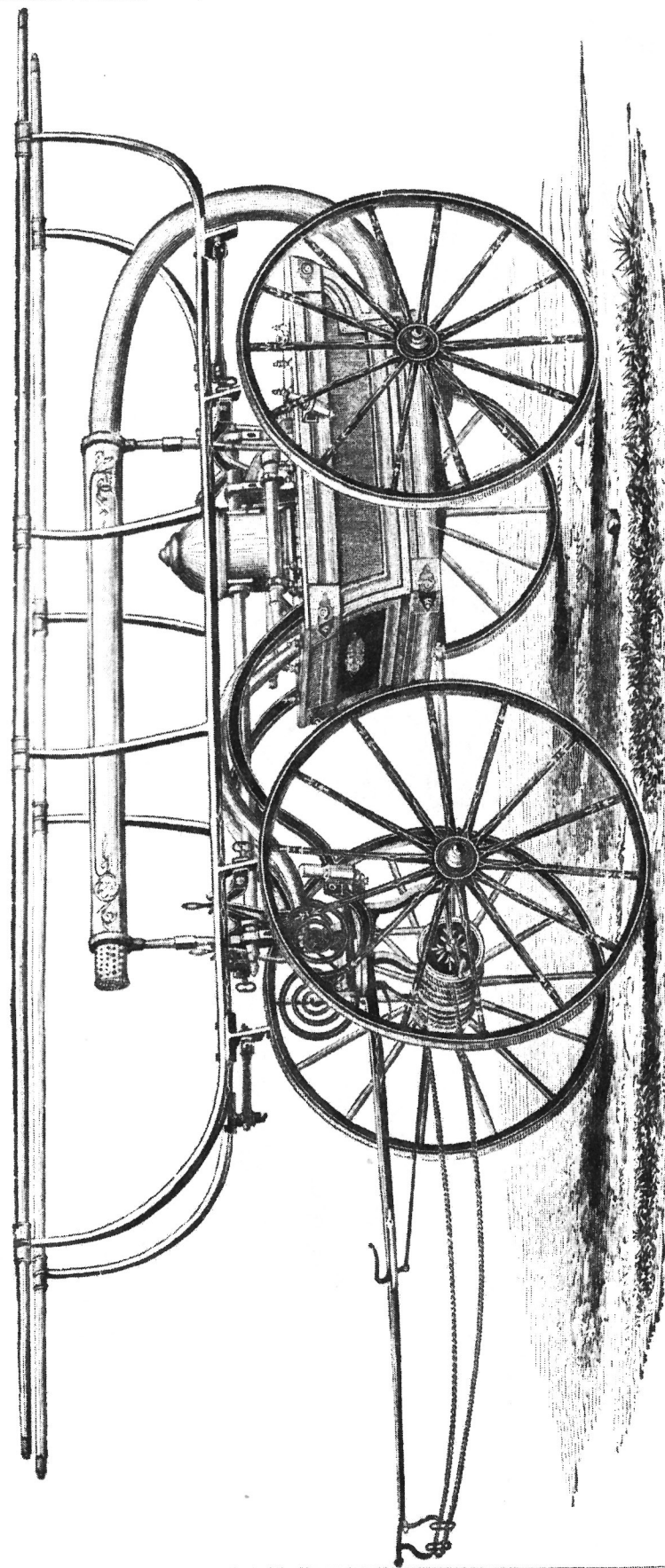


Fig. 248 represents our New Style Crane Neck Engine, of which we make three sizes, viz: 6½ inch, 7 inch and 8½ inch cylinders, with 7 inch stroke. It is made with Folding Brakes of wrought iron; has wheels 44 and 49 inches in diameter; has a solid mahogany box and mouldings, with brass mountings. The 6½ and 7 inch sizes have brakes 16 feet long, and will throw a stream about 140 feet. The 8½ inch size has brakes 18 feet long, and will throw a stream about 175 feet. The two smaller sizes are furnished with 12 feet of Suction Hose, and the largest size with 16 feet, while all sizes have in their equipment Discharge Pipes, Nozzels, Wrenches, Reel for Drag Rope, &c., &c. It is decidedly the handsomest Engine now manufactured.

PRICE.—6½ inch cylinder, 1 stream, \$1400.00; 7 inch cylinder, 2 streams, \$1500.00; 8½ inch cylinder, 2 streams, \$1800.00.

FOUR-WHEELED LAWN OR FIRE ENGINE. Arranged for Suction Hose. *Fig. 280.*

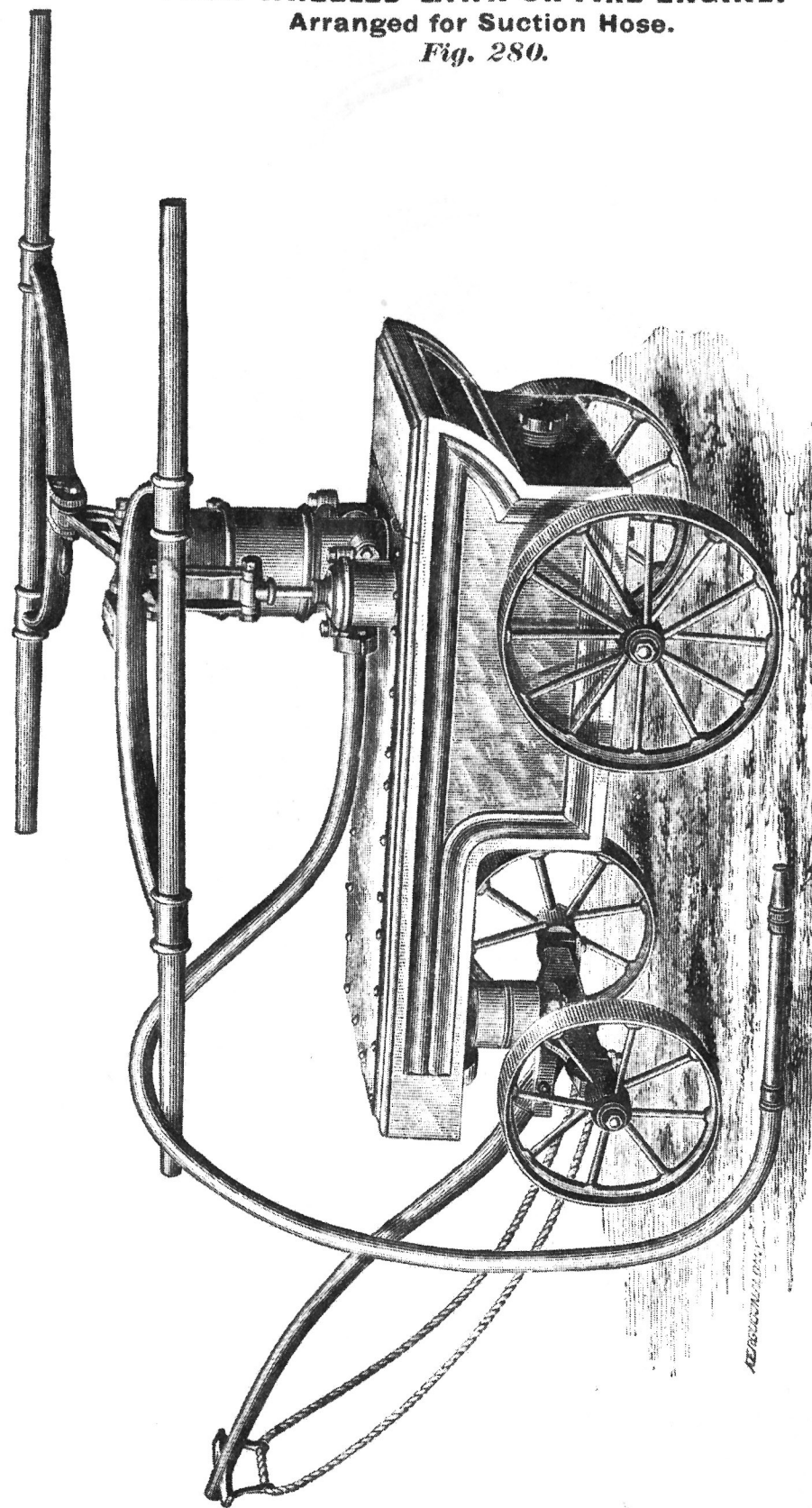


Fig. 280 shows our Four Wheel Lawn or Fire Engine, with Folding Side Brakes, adapted for 2 inch suction and 1½ inch discharge hose. It can draw from the box or through suction hose from well or cistern. Very handy for prompt use in case of fire on low buildings or at elevations of 50 or 60 feet. Six or eight men can work on it. PRICE.—With 10 feet Leading Hose and Discharge Pipe, ½ inch and ¾ inch nozzles, all complete, as shown in cut, less Suction Hose, each, \$135.00. We can furnish Suction Hose and extra Leading Hose at market prices.

Rumsey & Co.'s Portable Force Pump and Fire Extinguisher.
Fig. 271.

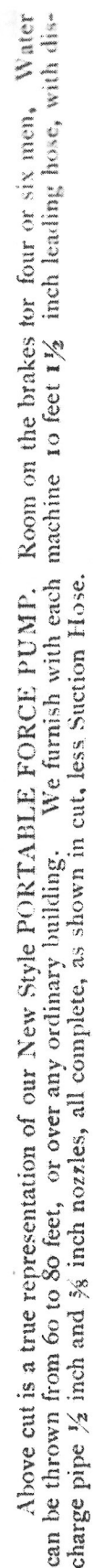
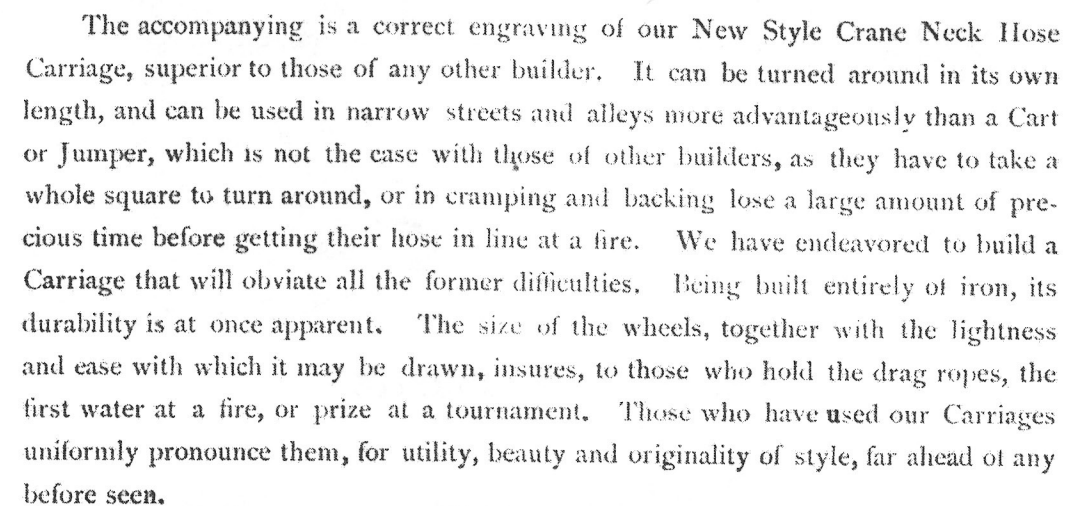


Fig. 271, with Iron Cylinders, without Suction Hose, Price.....	\$165.00
" " " "	" "
" " " Brass	20.00

NEW AND IMPROVED STYLE HOSE CARRIAGE.

Fig. 249.



We are now prepared to furnish Hose Carriages at any price, from \$500 00 to \$1500 00 and upwards, according to finish. We build them in numberless styles of finish : Polished Iron, Brass, Silver Plated and solid Silver mountings. Plain and colored glass Side Lights ; beautiful cut glass Lamps, with the name and No. of the Company engraved on the glass in the highest style of art. Painted and finished in the most attractive and ornamental manner.

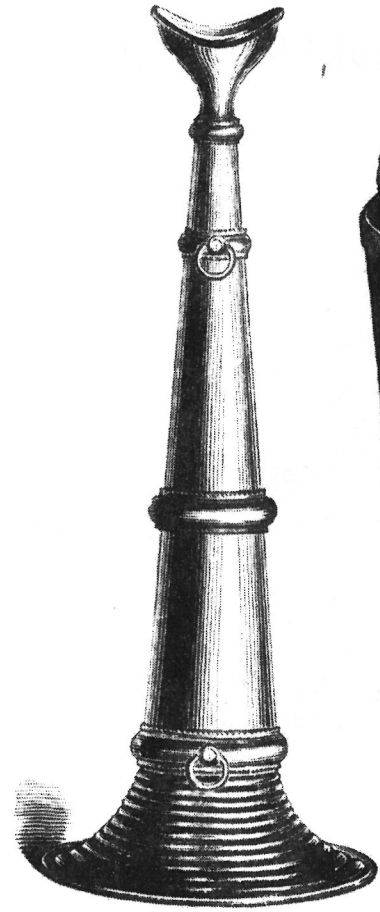
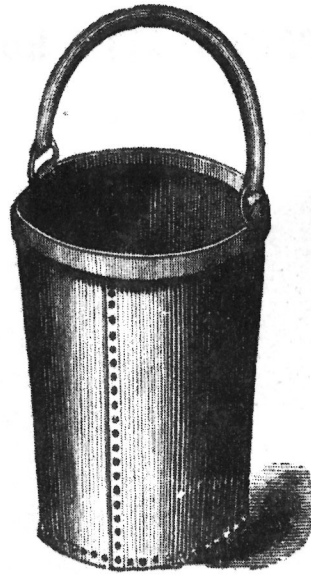
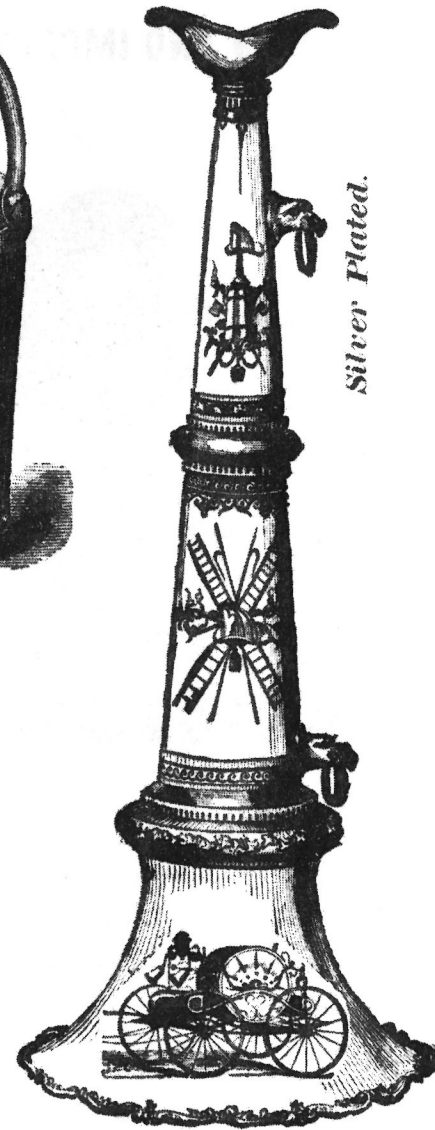
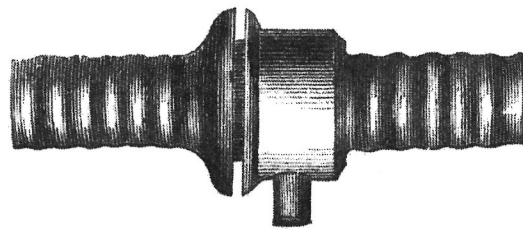
**Corrugated
Trumpet.****Fire Buckets.
Fig. 235.****Fig. 233.***Silver Plated.***BRASS HOSE COUPLINGS.****Fig. 236.**

Fig. 236 is fastened to Hose by winding with copper wire, up to 1½, and larger sizes by brass bands.

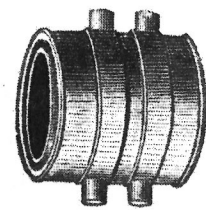
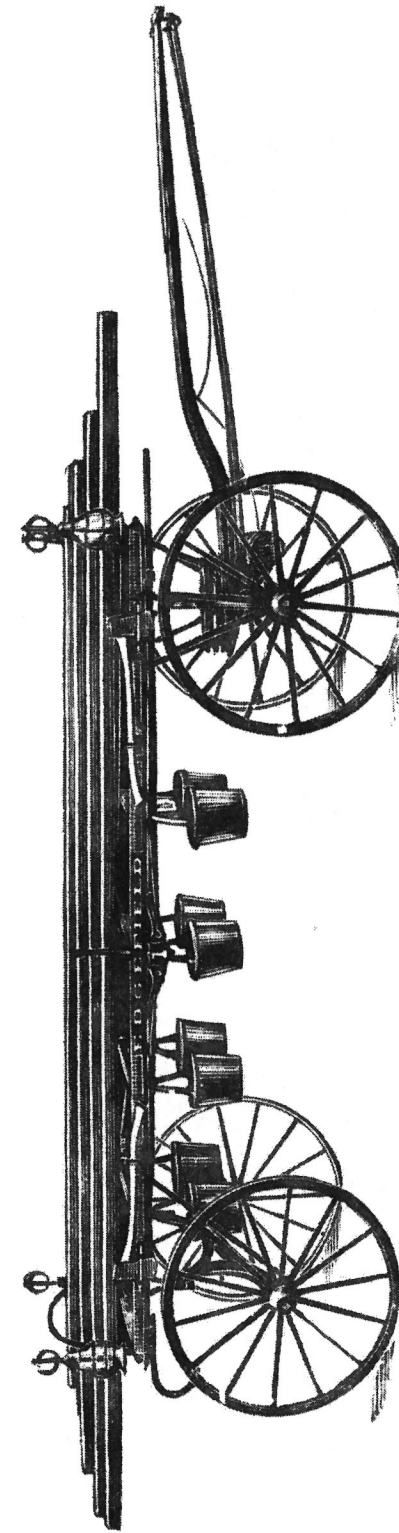
Fig. 237.

Fig. 237 is fastened to Hose by bands, for Leather Hose.

Prices furnished on application.

RUMSEY & CO.'S**IMPROVED HOOK AND LADDER TRUCK,---LADDERS ON ROLLERS.**

No. 1, Fig. 181. Furnished with 4 Ladders, 20, 18, 16 and 14 feet long. The 20 and 18 feet Ladders arranged to splice and make an Extension Ladder 32 feet long, nicely painted and striped; also 3 Hand Hooks, 1 Chain Hook, Rope, Chain and Pole, 4 Axes, 8 Buckets, 4 Brass Lanterns, Rope Reel and Drag Rope. Price \$375.00.

No. 2, Fig. 181. Furnished with 4 Ladders, 26, 24, 20, 17 and 15 feet long. The 26 and 24 feet Ladders arranged to splice and make an Extension Ladder 42 feet long; nicely painted and striped. Also 3 Hand Hooks, 1 Chain Hook, Rope, Chain and Pole, 4 Axes, 8 Buckets, 4 Brass Lanterns, Rope Reel and Drag Rope. Hind Wheels arranged to turn with Tiller. Price \$450.00.

RUMSEY & CO.'S

IMPROVED CRANE NECK REACH TRUCK, ON FOUR ELLIPTIC SPRINGS.

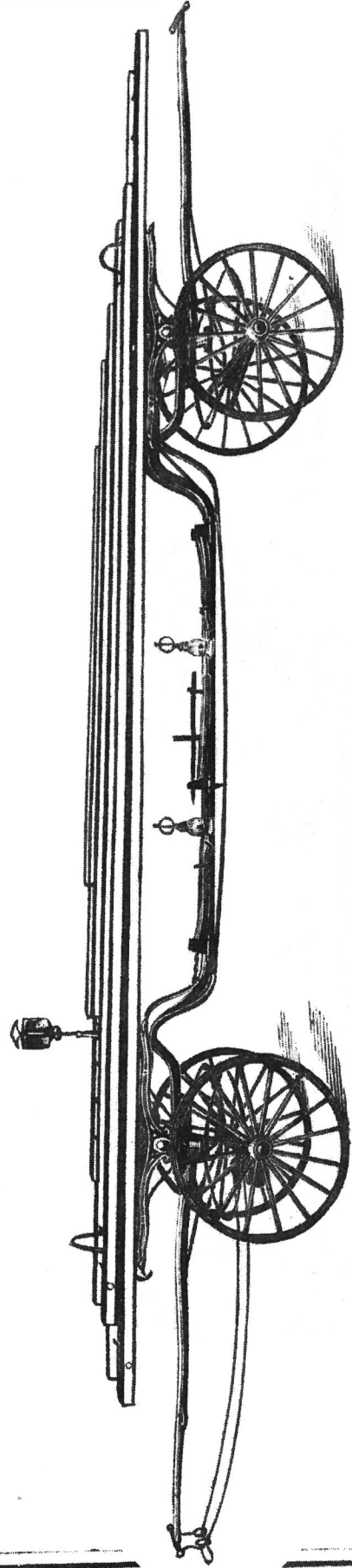
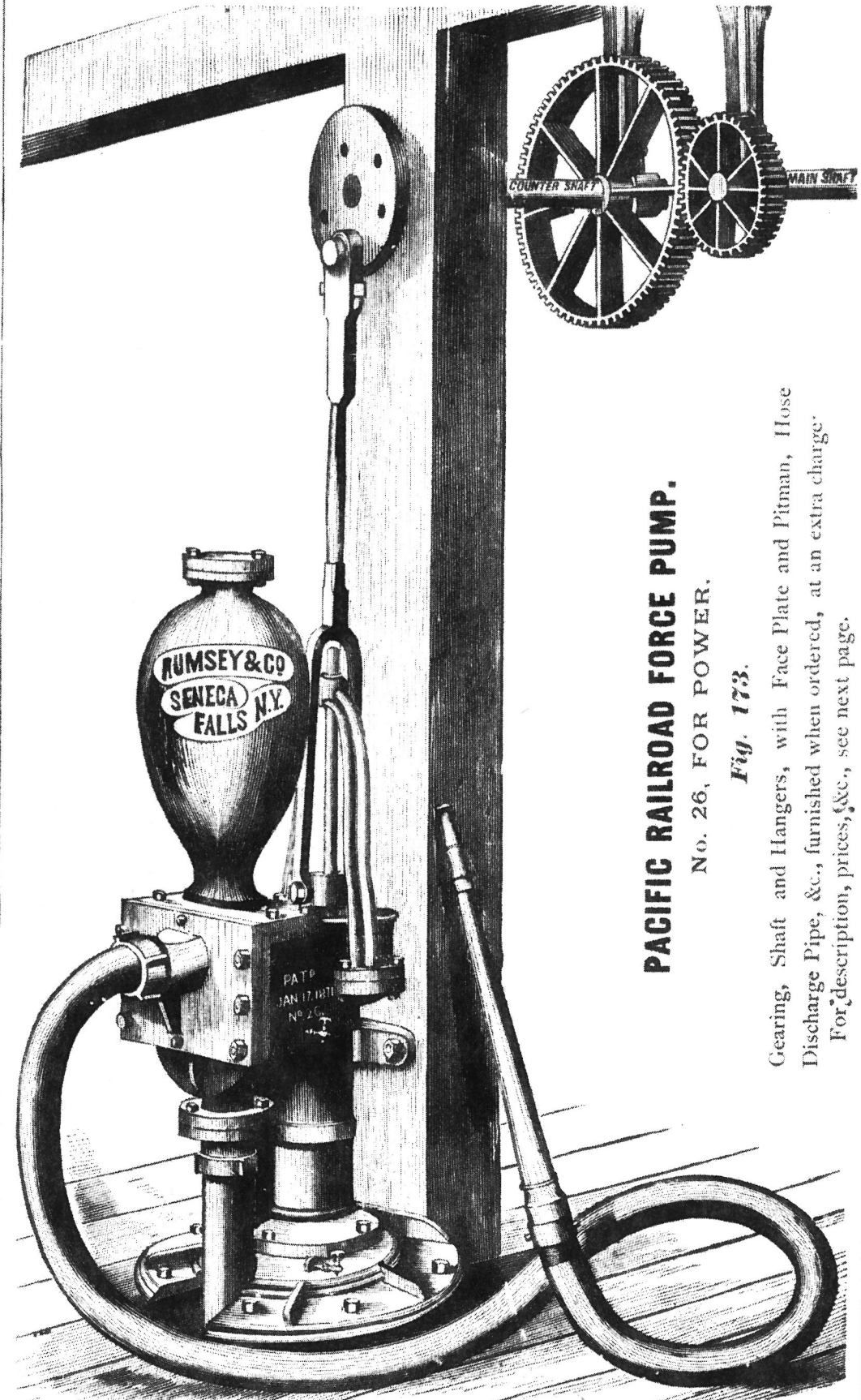


Fig. 282. Furnished with 5 Ladders, 6 Hand Hooks, 2 Axes, 2 Picks, 4 Lanterns, Rope Reel, Drag Rope and Side Ropes. Brass Hub Bands. Nicely painted and striped.

Price \$800.00 and upward, according to finish.

Estimates given for this style of Truck, with such equipments as may be required.



PACIFIC RAILROAD FORCE PUMP.

No. 26, FOR POWER.

Fig. 173.

Gearing, Shaft and Hangers, with Face Plate and Pitman, Hose Discharge Pipe, &c., furnished when ordered, at an extra charge. For description, prices, &c., see next page.

DESCRIPTION OF
PACIFIC RAIL ROAD DOUBLE-ACTING FORCE PUMPS.

For Hand and Power—For Railroads, Distilleries, Etc.

Figs. 171, 172 and 173.

The Rail Road Companies, Manufacturers, Distillers and others of this country, have for years felt the want of a Forcing Pump constructed in such a manner that its parts, when taken separately or combined, could be easily understood and operated. The great demand by these corporations has brought into use many worthless Pumps, and hundreds, now *non-existing*, made, not only through ignorance of mechanical proportions, but in such a frail, loose and unworkmanlike manner, that they were virtually condemned the first day of their practical existence. It must be realized that a Pump weighing several hundred pounds, constructed in a first-class mechanical manner, of Iron and Gun Metal, cannot be produced for a mere trifle above the cost of Pig Iron, and the Pumps we here illustrate and described under Figs. 171, 172 and 173, we will stake our reputation on as manufacturers of Pumps for the past thirty years; and we believe them to be the best and most *thoroughly substantial* Pumps made for supplying Tanks, Reservoirs or Fire purposes generally, and the price at which we furnish them REASONABLE. The Valves in this Pump are all metallic, and the Pump is so constructed that the Valves can be taken out and replaced by simply removing the Face plate without disturbing the connections. The Stuffing Box is surrounded by an oil or water chamber which prevents taking air into the Pump on the downward stroke, making it a perfect Double-Acting Force Pump. The Piston Rod is of Gun Metal, with a solid Cross Head; the Cylinder polished after it is bored out, and the Pump throughout constructed in a strong and durable manner. This Pump has been adopted by nearly all the Western Rail Roads, and gives better satisfaction than any Pump ever before introduced, and they all pronounce it JUST THE PUMP NEEDED.

Pumps with 3, 4 and 5 inch Cylinders, and 8 inch Stroke should be run 50 to 55 strokes per minute. Those with 5, 6, 7 and 8 inch Cylinders, 14 inch Stroke, should be run 40 to 45 strokes per minute.

		Diam of Cyl.	Stroke	Gals. per Min.	Iron	B'ess L'd Cyl
Fig. 171, No. 26.	Hand	3 inches.	8 in.	30 to 40	\$ 65.00	\$ 75.00
"	"	4 "	8 "	40 to 50	75.00	90.00
"	"	5 "	8 "	50 to 60	90.00	110 00
"	"	6 "	8 "	80 to 100	110.00	135.00
Fig. 173, No. 26.	Power	3 "	8 "	30 to 40	65.00	75.00
"	"	4 "	8 "	40 to 50	75.00	90.00
"	"	4 "	14 "	70 to 90	100.00	125.00
"	"	5 "	14 "	90 to 100	130.00	165.00
"	"	6 "	14 "	100 to 125	175.00	215.00
"	"	7 "	12 "	125 to 150	225.00	275.00
"	"	8 "	10 "	200 to 250	275.00	325.00

With Folding Brakes, Fig. 172, \$20.00 extra.

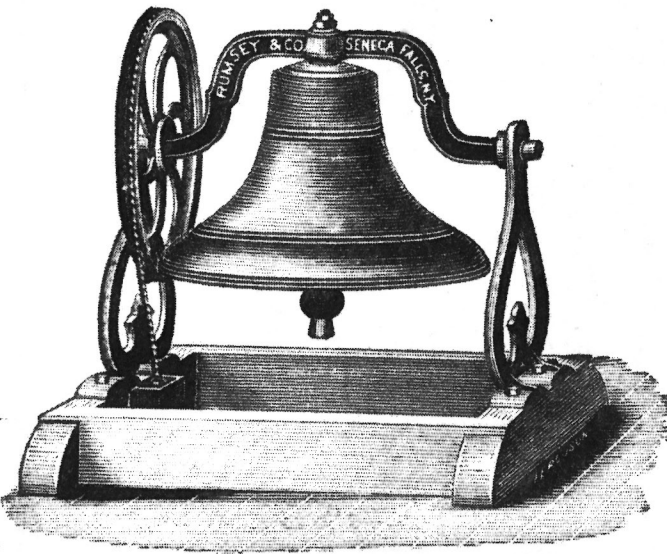
We furnish Wrought and Cast Iron Induction Pipes, Hose, Discharge Pipes, &c., when ordered.

We shall have larger sizes out for power in due time.

SENECA FALLS BELL FOUNDRY.

The Bell is an ancient invention of the church to serve a deep need, and to this day no better substitute can be found for it. But all the people of any town have likewise an interest in owning a Church Bell. They need it for funerals and weddings, for days of rejoicing and for national celebrations. It may ring for fire, and prevent a conflagration. In short, a Church Bell is a possession and a treasure to the whole community in the midst of which it is placed.

STEEL AMALGAM BELLS.



It is important that the belfry should be as open as possible, that the sound may be unobstructed. Mere slatting or small openings are insufficient to secure the full volume of sound. The belfry should be floored above and below, and the side openings should extend to the floor.

FOR SCHOOL HOUSES, ACADEMIES, FACTORIES, SHOPS, ETC.

Sizes and Prices, with Wheel Hangings and Frame Complete.

Diameter of Bells.	Weight with Wheel Hangings and Frame Complete.	Cost of Bell and Hangings.
No. 6.....25 inches.....	230 lbs.....	\$25 00
No. 6½.....27 inches.....	340 lbs.....	36 00
No. 7.....30 inches.....	490 lbs.....	50 00

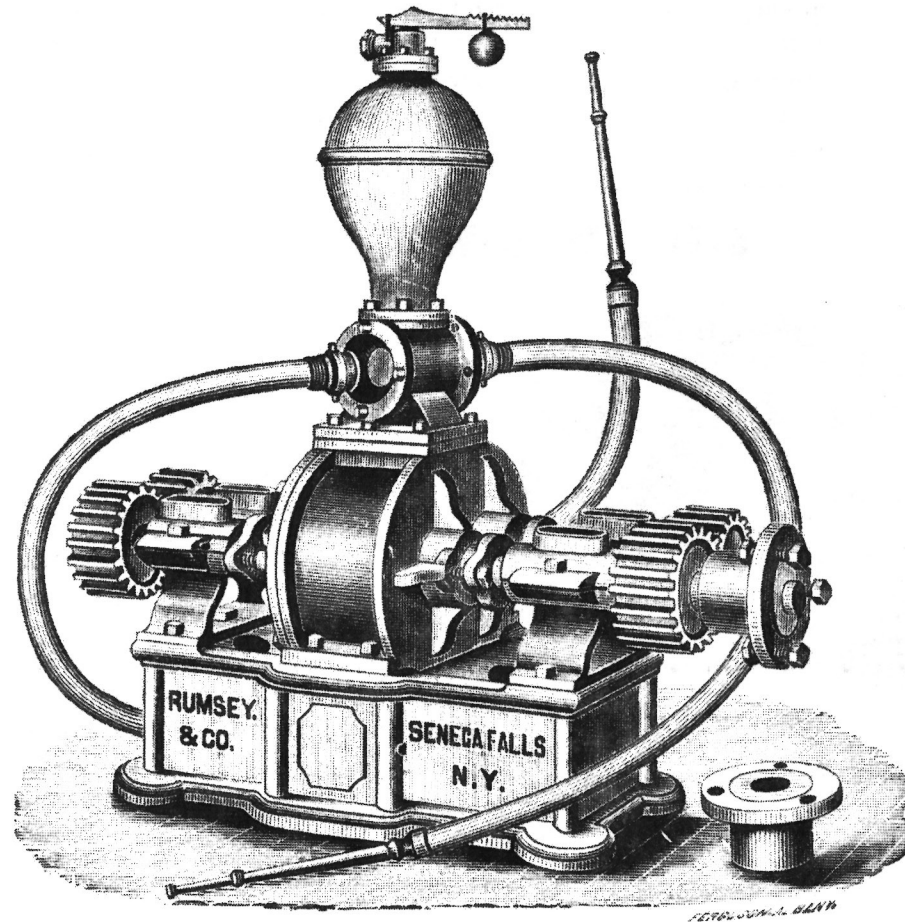
CHURCH BELLS.

Sizes and Prices, with Wheel Hangings and Frame Complete.

Diameter of Bell.	Weight of Bell with Standard.	Cost of Bell and Hangings.
No. 8.....34 inches.....	730 lbs.....	\$ 75 00
No. 9.....38 inches.....	925 lbs.....	130 00
No. 10.....42 inches.....	1200 lbs.....	175 00

These Bells being an alloy of cast steel, combine valuable qualities, among which are tone, strength, sonorousness and durability of vibration, unequaled by any other manufacturer, and costing less than any other in the market.

We are the original manufacturers of Steel Amalgam Bells, and the world-wide reputation they have acquired has induced other parties to adopt a similar name, to enable them to dispose of an inferior article, relying solely on the merits of the name.

ROTARY FIRE PUMPS.*Fig. 199.*

Fire Pumps should be run with strong gearing, if possible. Belts are liable to fail at a critical moment.

Fig. 199, No. 3, with coupling for Counter Shaft, Take-off for 1 or 2 streams, and Safety Valve \$170 00

Fig. 199, No. 4. Under ordinary circumstances, we would recommend the provision of fifteen to twenty horse power to throw a SINGLE stream, and thirty to forty horse power for the full capacity of the Pump. This size should be run about as follows :

Rate of Speed for No. 4.

For 1 one-inch stream thrown 100 feet high, 160 revolutions per minute.

For 2 " " " 100 " 320 " "

Fig. 199, No. 4, with coupling for Counter Shaft, Take-off for 2 streams, and Safety Valve \$225 00

Fig. 199, No. 5. Under ordinary circumstances, we would recommend the provision of fifteen to twenty horse power for a SINGLE stream, and eighty horse power for the full capacity of the Pump.

Rate of Speed for No. 5.

For 1 one-inch stream thrown 100 feet high, 100 revolutions per minute.

For 2 " " " 100 " 200 " "

For 3 " " " 100 " 300 " "

Fig. 199, No. 5, with coupling for Counter Shaft, Take-off for three streams, and Safety Valve \$275 00