

The Raleigh Fire Museum Presents

Fire Museums and Fire Attractions

North Carolina | South Carolina | Virginia | Maryland | DC
Kentucky | Tennessee | Georgia



July 2014

About This Document

This is a digital version of a physical "flip book" that was created in July 2014, for display at the South Atlantic Fire Rescue Expo in Raleigh, NC.

The Raleigh Fire Museum presented information about fire museums and fire attractions in North Carolina and surrounding states.

This digital document was created using the digital source files, and combined with optical scans of the promotional rack cards.



Raleigh Fire Museum

105 Keeter Center Drive, Raleigh, NC

www.raleighfiremuseum.org



Experience the History of Firefighting in Raleigh



See antique fire engines at Fire Station 28

3500 Forestville Road, Raleigh NC

Visitors welcome

Fire Station 28

Fire Station 28 is located at 3500 Forestville Road in Raleigh, NC. It houses a 1905 American LaFrance steam engine, a 1926 American LaFrance pumper, a 1950 Mack pumper, two 1953 rescue boats, a 1961 American LaFrance pumper, and a 1982 Mack pumper. Visitors are welcome.



Raleigh Fire Museum

The Raleigh Fire Museum is located just a few blocks south of downtown Raleigh at the Keeter Training Center at 105 Keeter Center Drive. It's open on the second Saturday of each month, from 10:00 a.m. to 2:00 p.m. The 900 square-foot museum includes hundreds of artifacts and photographs. Major exhibits include the city's 1870 fire alarm bell, an early 19th century hose reel, and color film footage from 1950.



Schedule tours for both locations at
www.raleighfiremuseum.org/tours

Visit the Raleigh Fire Museum

105 Keeter Center Drive, Raleigh NC

Open second Saturday of each month, 10 to 2

Admission is free

www.raleighfiremuseum.org

The Raleigh Fire Museum is a 501(c)(3) non-profit corporation with the mission to preserve and present the history of firefighting in North Carolina's Capital City. Learn how you can contribute. Contact our organization at contact@raleighfiremuseum.org or PO Box 31084, Raleigh, NC 27622. Our phone number is 919-964-1070.

Raleigh Fire Station 28

3500 Forestville Road, Raleigh, NC

www.raleighfiremuseum.org



Vintage Raleigh Fire Stations



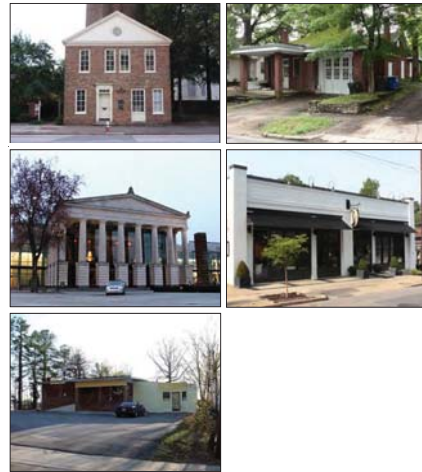
Station 6 (1949)

Fairview Road

Station 3 (1951)
13 S. East Street

Station 1 (1953)
220 S. Dawson Street

Former Raleigh Fire Stations



Capital Hose House – 1887 to 1890
110 W. Morgan Street

Old Station 4 – 1926 to 1963
505 W. Jefferson Street

Old Station 2 – 1932 to 1969
Memorial Auditorium, rear

Old Station 6 – 1943 to 1948
2519 Fairview Road

Old Station 8 – 1960 to 1963
1007 Method Road

Black Mountain Fire Department

106 Montreat Road, Black Mountain, NC

Photographed October 2007



Caswell No. 1 Fire Station Museum

118 S. Queen Street, Kinston, NC

Photographed December 2008, plus photos from web site



CASWELL NO. 1 FIRE STATION MUSEUM



*Kinston's oldest
brick structure*

118 S. Queen Street
Kinston, North Carolina 28501
(252) 939-0171 or (252) 523-2500

Saturday 10am - 5pm
Other times by appointment only

See late 19th century fire equipment, including a truck that was on the scene during Kinston's devastating fire of 1895 that



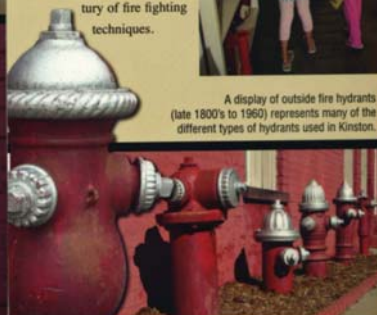
destroyed nearly all downtown homes and businesses. The building, on the National Register of Historic Places, is the city's original fire station and the oldest brick

structure in Kinston. Dramatic photographic exhibits capture the destruction of other major downtown fires as well.

One of the features of the Firemen's Museum is a 1922 American LaFrance Pumper which once protected Kinstonians from fire. A collection of alarm systems, helmets, nozzles, ladders, fire extinguishers and other memorabilia span a century of fire fighting techniques.



A display of outside fire hydrants (late 1800's to 1960) represents many of the different types of hydrants used in Kinston.



Catawba County Firefighters Museum

3957 Herman Sipe Road, Conover, NC

www.catawbacountync.gov/Fire/ffm.asp

CATAWBA COUNTY FIREFIGHTERS MUSEUM

WELCOME TO THE CATAWBA COUNTY FIREFIGHTER'S MUSEUM



This facility was developed with the assistance and support of the fire departments of Catawba County, Catawba County government, and many volunteers and organizations who gave of their time, talents, and often donations to make it a reality. It is dedicated to the firefighters of Catawba County and serves as a resource to educate and entertain visitors. Since the museum was opened to the public on May 1, 1994, we have had over 16,000 visitors to the facility, including visitors from 35 different states and 9 countries. The Firefighter's Museum is located off of Highway 70 on the Herman Sipe Road. Normal operating hours are Saturdays from 9am-4pm and Sundays from 1pm-4pm. We recommend you call the museum at 828-466-0911 before you come to be sure it is open. Weekday tours are by appointment only for school, civic and community groups. For more information, call the Catawba County Fire Marshal's Office at 828-465-8238 or the museum at 828-466-0911 and leave a message.

Driving Directions:

Travel I-40 to the 130 exit. Turn right at the top of the exit ramp. (look for museum sign). Travel past the K-Mart Shopping Center on the right and the fire department on the left. As you go around the curve to the left, turn right at the spotlight on to Herman Sipe Road (look for museum sign). Travel Herman Sipe Road about two miles. The museum is located on the left on Museum Drive, just before you get to the church (look for museum sign). The museum is a rock building with a circle-paved drive.

- [Map](#)
- [Go on a Tour of Our Complex](#)
- [Catawba County Fire/Rescue Division](#)

Catawba County Firefighters Museum

3957 Herman Sipe Road, Conover, NC

www.catawbacountync.gov/Fire/ffm.asp

Photographed October 2007



Charlotte Fire Department

Fire museum closed 2009

The Charlotte Fire Department has a fleet of antique apparatus that is displayed and appears at various special events around the city, including an 1866 Jeffers hand engine, a 1902 American LaFrance steamer, 1928 American LaFrance pumper, a 1948 Mack pumper, a 1958 Seagrave pumper, and a 1971 Mack pumper.



Charlotte's antique apparatus is housed in the fire department's old maintenance shop, adjacent to Station 11, at 620 W. 28th Street.

Donald's Fire Haven Museum

7249 Branson Mill Road, Pleasant Garden, NC

www.firehavenmuseum.com



Donald's Fire Haven Museum – Pleasant Garden, NC

7249 Branson Mill Road, Pleasant Garden, NC

www.firehavenmuseum.com

Photo from web site



Fayetteville Fire Department History Room

Station 2 – 101 Olive Road, Fayetteville, NC

www.bravethefire.com



Fayetteville Fire Department History Room

Station 2 – 101 Olive Road, Fayetteville, NC

www.bravethefire.com

Photographed 2014



Fayetteville Area Transportation and Local History Museum

325 Franklin Street, Fayetteville, NC

www.fcpr.us/transportation_museum.aspx

Photographed 2014



FAYETTEVILLE AREA
TRANSPORTATION MUSEUM



10 a.m. - 4 p.m.
Tuesday - Saturday
Closed Sunday & Monday

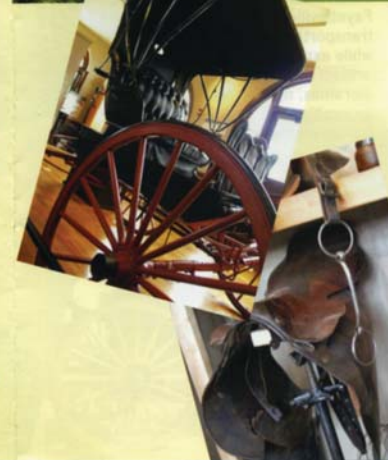
FREE ADMISSION

Groups Please Call Ahead

325 Franklin Street
Fayetteville, NC 28301
(910) 433-1455

Fayetteville  Cumberland
PARKS & RECREATION
www.fcpr.us

Fayetteville Area Transportation Museum



BE A PART OF THE HISTORY...

ARTIFACT DONATIONS

We are currently building our museum collections and would greatly appreciate the donation of artifacts, photographs, or documents related to transportation history. We are also collecting items of local historical interest to display at the Market House.

Items may be donated or placed on loan.

VOLUNTEER ASSOCIATES

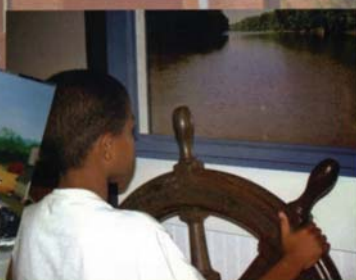
We are currently seeking volunteer museum associates to provide their time and talent as tour guides, research assistants, receptionists, or archival assistants. Museum associates are the sustaining force that helps to keep the museum running effectively.

GROUP TOURS

School groups, church groups, civic groups, and other large groups of people wishing to tour the museum should schedule an appointment in order to avoid conflicts with other groups or programs.

As we enter the 20th century, explore early automobile travel and aviation. The story of transportation extends into the county and surrounding townships of Cumberland County. The history of local transportation is featured in a manner that ties our past to the present.

This enriching experience is ideal for a wide range of audiences to include school groups, local citizens, and visitors.



A GREATER UNDERSTANDING...

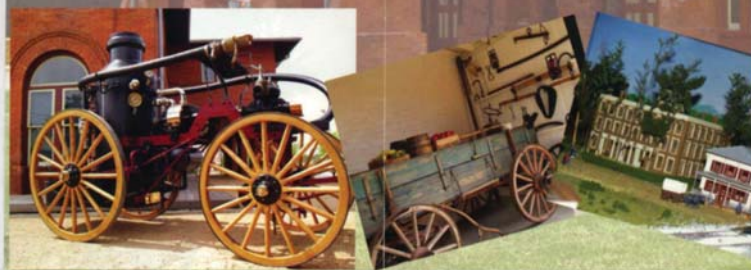
The Fayetteville Area Transportation Museum is housed in the recently restored circa 1890 Cape Fear and Yadkin Valley Railroad Depot.

Historically an important transportation center, Fayetteville was established in the colonial period at the head of navigation on the Cape Fear River and served as a trade link between the west and the port of Wilmington on the lower Cape Fear River. Visitors will experience Fayetteville's rich transportation history while exploring exhibits, artifact displays, dioramas, models and an exciting video on local transportation history.

THE JOURNEY BEGINS...

The journey begins with early Native American transportation and continues with the colonial and revolutionary period as the city grew from two small villages to the vibrant and growing city of Fayetteville.

Explore Fayetteville's river travel, canals, bridges, plank roads, stage coaches, railroads and much more.



King's Mountain Fire Museum

106 Spruce Street, Kings Mountain, NC

www.kmfire.com/firemuseum.htm

Kings Mountain Fire Department
Fire Museum

Home | Contact Us

Museum Speech
Museum Story
Museum Pictures

Kings Mountain Fire Dept.
106 Spruce Street
PO Box 429
Kings Mountain, NC 28386
Phone: 704-734-0555
Fax: 704-734-0555

The Kings Mountain Historical Fire Museum was begun in November, 1975 and completed in early 1976. Over the following years additional buildings and improvements have been made. All of the work has been done by the past and volunteer firefighters. Very little of the work has been done by outsiders other than some brick work and roofing.

The museum was born as a result of a conversation between then-Chief Gene Tignor and volunteer firefighter Jerry White, while trying to decide what to do with the city's 1938 Ford fire truck. White suggested that a museum be built to house this truck and all kinds of old firefighting apparatus.

The museum houses several different fire trucks, the first pull-by-hand hose cart, first wooden ladder, and also the first fire pole used in Kings Mountain. There are old sets of turn out gear, early fire extinguishers, a showcase of past chiefs, and fire patches from around the world.

The Kings Mountain Historical Fire Museum welcomes visitors to its facility. To schedule a tour, contact the Fire Department at 704-734-0555. The Museum is located on Cleveland Avenue just off of the 74 By Pass in Kings Mountain. We also welcome donations of fire equipment for display in the museum. We are very proud of our extensive collection of patches also. Is your department's patch on display? We welcome patches from all organizations, not just fire departments. Send us your to:

Patch Collection
c/o Kings Mountain Fire Department
P.O. Box 429
Kings Mountain, N.C. 28386





King's Mountain (NC) Fire Museum

106 Spruce Street, Kings Mountain, NC

www.kmfire.com/firemuseum.htm

Photos from web site



Mount Airy Museum of Regional History

301 North Main Street, Mount Airy, NC

www.northcarolinamuseum.org

Photographed 2014 and 2009

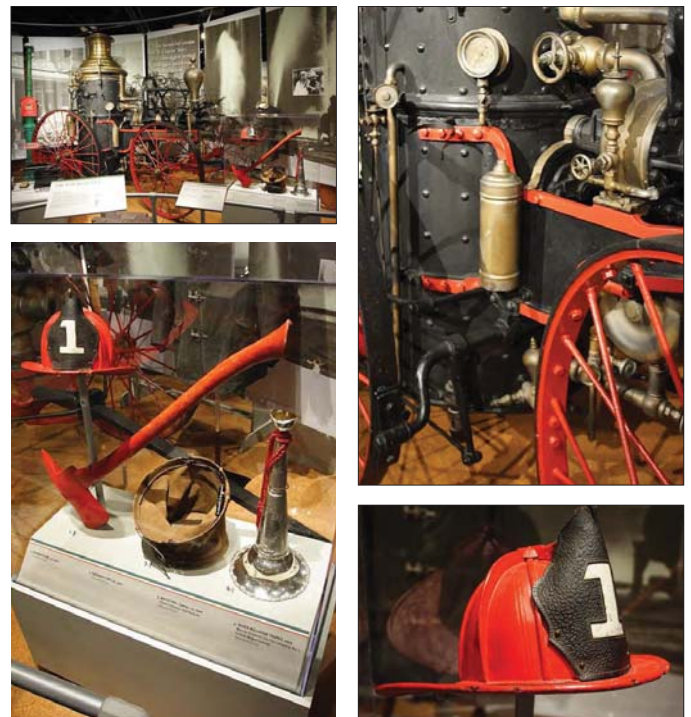


Museum of the Albemarle

501 S. Water Street, Elizabeth City, NC

www.ncdcr.gov/ncmoa

Photographed April 2009



MUSEUM OF THE ALBEMARLE



501 S. Water Street
Elizabeth City, NC 27909
(252) 335-1453
museumofthealbemarle.com



Under Both Flags CIVIL WAR IN THE ALBEMARLE



Come experience the stories of people who lived, served, and sacrificed during America's greatest conflict. Their experiences are woven together in a unique exhibit commemorating the 150th anniversary of the Civil War. Discover how this turning point in our history brought freedom to slaves, required great sacrifice by all, and left lasting memories.



OPEN
Tuesday through
Saturday
10 am - 4 pm
Admission Free



North Carolina Transportation Museum

411 S Salisbury Ave, Spencer, NC

www.nctrans.org

Hand reel displayed in Roundhouse - Apparatus stored in Back Shop

Photographed June 2014



Visit the N.C. Transportation Museum!



The N.C. Transportation Museum
411 S. Salisbury Ave., Spencer, North Carolina
Phone: 704-636-2889 Fax: 704-639-1881
Online at www.nctrans.org

Visiting the N.C. Transportation Museum requires admission and train ride fees. Operational hours and train ride schedules are seasonal. Please visit nctrans.org to find current hours and admission rates.

NOTE: Admission pricing differs for special events. Hours and train ride schedule are seasonal. Please visit the museum's website for the current schedule.



The N.C. Transportation Museum is part of the Division of State Historic Sites, which is a division of the Department of Cultural Resources. The Department of Cultural Resources is a state agency dedicated to the promotion and protection of North Carolina's arts, history and culture. Additional support for the museum and its programs is provided by the N.C. Transportation Museum Foundation.



North Carolina Transportation Museum

...the museum that moves you!



Discover the people and machines that moved North Carolina

I-85 at Exit 79 - Spencer, NC

The N.C. Transportation Museum in Spencer



History



The N.C. Transportation Museum is located on the site of what was once Southern Railway Company's largest steam locomotive servicing facility. J.P. Morgan, Southern's owner, chose the site because of its location midway between the railroad's major terminal points of Washington, D.C., and Atlanta, Ga. Construction of the Shops began in 1896, and they were named in honor of the first president of Southern Railway, Samuel Spencer.

During its peak, Spencer Shops employed nearly 3,000 people, which directly and indirectly provided most of the jobs for the towns of Spencer, East Spencer and other surrounding Rowan County communities.

Grounds and Exhibits

Barber Junction

Barber Junction, built in the small Rowan County town of the same name in 1896, was gifted and moved to the site in 1980. The building was renovated and dedicated in 1996, becoming the museum Visitor's Center and first point of contact for visitors. The building still serves as a depot. The museum's on-site train ride departs from this building.

The Back Shop

The immense Back Shop structure was built in 1905 and served as the major overhaul facility for steam locomotives. The largest structure on the site and once the largest industrial building in North Carolina, two to three locomotives per week emerged as new from the Back Shop during its peak. The Back Shop opened to the public in September of 2010, adding an interior deck on the south end to allow visitors to step inside and appreciate the size and scope of the massive structure.

The Bob Julian Roundhouse

The 37-stall Bob Julian Roundhouse, one of the largest remaining such structures, was built in 1924 and is one of the few preserved roundhouses remaining in the country. Home to some 40 restored locomotives and rail cars, in 2011, the Roundhouse was named a Historic Mechanical Engineering Landmark by the American Society of Mechanical Engineers.

Exhibits at the Roundhouse focus on the lives of the men who made Spencer Shops run and the history of railroads in North Carolina. Aviation exhibits are also displayed. Stop by the orientation room to get a map of the building, watch the orientation film, and ride the 100-foot turntable.

The Master Mechanic's Office Wagons, Wheels and Wings

The Master Mechanic's Office, built in 1911, once housed the head of operations for Spencer Shops, but today the Wagons, Wheels, and Wings exhibit hall and the Gift Station fill the historic structure.

Displays trace the history of all forms of transportation in the state, while Wagons, Wheels, and Wings is also used to house temporary and traveling exhibits.

The Flue Shop Bumper to Bumper

The Flue Shop, built in 1924 with hundreds of glass panes, was used to repair the flues, or pipes, used in steam locomotive boilers. The building now houses the Bumper to Bumper auto exhibit, a collection of antique automobiles ranging from a 1901 White Steamroller to a 1978 Plymouth N.C. Highway Patrol car. It traces the evolution of the automobile in North Carolina from tiny buggy-type vehicles to sleek 1940s roadsters and modern cars.



New Bern Firemen's Museum

408 Hancock Street, New Bern, NC

www.newbernfiremuseum.com

Photographed December 2008



FIREMEN'S MUSEUM

NEW BERN FIREMEN'S MUSEUM

FAMOUS WORLD RECORDS
ANTIQUE FIRE-FIGHTING EQUIPMENT



ADMISSION
Adults \$5.00
Children \$2.50
Children 5 & under FREE

VISITING HOURS
Monday-Saturday
10:00 A.M.-4:00 P.M.
Winter hours may vary
Educational Programs Available

Gift Shop & Souvenirs

*We welcome your visit to
Historic New Bern,
the first capital of
North Carolina.*

408 Hancock Street
New Bern, North Carolina
(252) 636-4087
WWW.NEWBERNFIREMUSEUM.COM



ON DISPLAY

New Bern's original fire-fighting equipment,
dating back to the early 19th century

1884 Horse-drawn Steamer

1914 New Bern's First Motorized Fire Engine

1927 New Bern's First Ladder Truck

1800s Leather Fire Helmets

Civil War Display Case

Murals & pictures from 1890 to 1920, depicting
scenes and memories of old New Bern



Free on-site parking while visiting the museum!
408 Hancock Street • (252) 636-4087



WWW.NEWBERNFIREMUSEUM.COM

Old Salem Market Fire-Engine House

600 S. Main Street, Winston-Salem NC

Photographed October 2013 and December 2009



Steam Engine at Visitors Center, 900 Old Salem Road
Photographed October 2013



OLD SALEM MUSEUMS & GARDENS

ONE OF AMERICA'S MOST AUTHENTIC
HISTORICAL ATTRACTIONS

The Historic Town of Salem and The
Museum of Early Southern Decorative
Arts, along with award-winning heirloom
Gardens, invite today's visitors to
experience the complete story of those who
lived and worked in the early South.



Founded in 1766 by the Moravians, a Protestant faith that began in what is now known as the Czech Republic, the restored town of Salem is a vision of life in a congregational community in the early American South. Costumed tradesmen and women re-create life by producing essential goods like tools, ceramics, furniture, and metals using traditional practices of long ago. The Moravian Church and Salem residents kept meticulous records and accounts of their lives, interactions, buildings, and landscapes, allowing Old Salem Museums & Gardens to restore accurately the remaining original buildings and reconstruct those that are no longer standing. These records, diaries, and accounts also provide the details needed to tell the stories of those who lived and worked in Salem.



The Museum of Early Southern Decorative Arts (MESDA) at Old Salem Museums & Gardens is the nation's preeminent center for the exhibition and research of decorative arts made in the early South.

Founded in 1965, MESDA contains the finest collection of its kind in the nation, featuring architecture, furniture, ceramics, metalwork, needlework, paintings, prints, and other decorative arts made and used by the early settlers of Maryland, Virginia, the Carolinas, Georgia, Kentucky, and Tennessee, from the seventeenth to the mid-nineteenth centuries. From the first English footsteps at Jamestown to the first shots fired at Fort Sumter - and from the shores of the Atlantic to the banks of the Tennessee - MESDA's guided tour explores Southern people and Southern places through the decorative arts. The 50-minute tour takes visitors through 12 gallery rooms exhibiting the most important and engaging pieces in our collection.

Changing exhibitions take place in the G. Wilson Douglas, Jr. Exhibition Gallery.



SHOPPING IN OLD SALEM

There are several opportunities throughout Old Salem to shop for souvenirs, treats, and gifts.



Purchase tasty cookies, cakes, and breads at Winkler Bakery.



Shop for Moravian stars, beeswax candles, and other unique gifts and reproduction items at T. Bagge Merchant.

- Marketplace in the Visitor Center
- Souvenir Shop in the Visitor Center
- Candy Shop in the Visitor Center
- The Frank L. Horton Museum Center Store
- The A. Butner Hat Shop
- The Moravian Book and Gift Shop
- The Old Salem Garden Shop

DINING IN OLD SALEM

There are two independently owned and operated restaurants within the historic district.

The Tavern in Old Salem offers an authentic dining experience, with costumed servers preparing traditional Moravian meals, including the local favorite, chicken pie.

The sandwich shop above Winkler Bakery serves sandwiches and other lunch items.

EVENTS

From fun hands-on events to book signings; furniture seminars to holiday activities, our attractions offer more than 100 unique and exciting events each year. Visit oldsalem.org for a complete and up-to-date list of events.

HOURS OF OPERATION

Tuesday – Saturday: 9:00 a.m. – 5:00 p.m.
Sunday: 12:30 p.m. – 5:00 p.m.
Closed Mondays, Easter, Thanksgiving, Christmas Eve & Day.

TICKETS

All-in-One tour tickets are \$23 Adults/\$11 Children (ages 6 – 16). A variety of ticket options are offered. Tickets can be purchased online in advance or at the Old Salem Visitor Center upon arrival. Prices subject to change.

MEMBERS ENJOY GREAT BENEFITS!

Join Old Salem and experience authentic American history brought to life. As a member, you can enjoy discounts when shopping as well as special rates on programming and free admission to the Museum all year long.

DIRECTIONS: Conveniently located south of downtown Winston-Salem, NC, and west of US Highway 52 (use exit 108-c). From Interstate 40 take Highway 52 North to exit 108-c. From Business 40, take Highway 52 South to exit 108-c.

OTHER SITES TO VISIT: Old Salem recommends these quality Southern Highland Attractions for you to consider when planning your trip: North Carolina Biltmore Estate, Cherokee Historical Association, Chimney Rock Park, Grandfather Mountain, Great Smoky Mountains Railroad, The Museum of the Cherokee Indian, Nantahala Outdoor Center, and Tweetsie Railroad; Virginia Baret Theatre, Luray Caverns, and Natural Bridge, Shenandoah Caverns; Tennessee Gatlinburg Sky Lift, Lookout Mountain Incline Railway, The Lost Sea, Rock City Gardens, and Ruby Falls. www.southernhighlands.org.

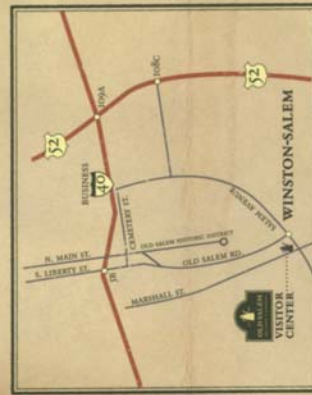
Old Salem Museums & Gardens, including MESDA, was among the first museums in the country to be accredited by the American Association of Museums (AAM). Old Salem Museums & Gardens is also a member of the Outdoor History Museum Forum, a nationwide partnership of outdoor history museums. www.outdoorhistory.org.

To maintain the historic character of Old Salem, brick sidewalks and stone walkways are used that can be uneven, rough, or slippery. Visitors are advised to exercise caution walking in the historic area, including inside buildings with rough floors. For those with special needs, please ask for assistance at the Visitor Center at the time of purchase.

Visit oldsalem.org • Call 336-721-7350



600 South Main Street
Winston-Salem, NC 27101
336-721-7350 • oldsalem.org



Visitor Center: 900 Old Salem Road, Winston-Salem, NC 27101
336-721-7350 • oldsalem.org



OLDSALEM.ORG
336-721-7350

Rocky Mount Fire Department Museum

404 S. Church Street, Rocky Mount, NC

www.rockymountnc.gov/fire/museum.html

Photographed April 2009



More in North Carolina

Badlin Firehouse Museum

60 Falls Road, Badin, NC

www.badinmuseum.stevelee.name/firehouse.html



Farmville Fire Museum

3713 N. Main Street, Farmville, NC

Graham Historical Museum

135 W. Elm Street, Graham, NC

Located in 1914 city hall, courtroom, police station, and fire station

Plummer Hook & Ladder Museum

211 S. Bragg Street, Warrenton, NC

Current under renovation, future site of fire museum

Antique Fire Apparatus

For more information on locations of antique fire apparatus in North Carolina, see www.fdmmaps.com/fire-apparatus-antiques

Anderson City Fire Department Museum

400 S. McDuffie Street, Anderson, SC 29624

www.downtownanderson.com/attractions.shtml



Anderson City Fire Department Museum
400 S. McDuffie St.
Anderson, SC 29624

[Map it!](#)

Experience an amazing collection of four fire trucks from the late 19th and early 20th century. The collection includes: a 1880s horse-drawn wagon; a 1911 American LaFrance hose and chemical truck, the city's first motorized fire truck has solid rubber tires and is driven by a chain drive; a 1915 Seagrave Motor Pumping Engine, the first with spring-loaded bumpers and a 1919 Seagrave Motor Pumping Engine. The museum also features other antique fire fighting equipment. Open Monday-Friday 9:00 a.m.-5:00 p.m. and by appointment.

Anderson City Fire Department Museum

400 S. McDuffie Street, Anderson, SC 29624

<http://www.downtownanderson.com/attractions.shtml>

Photos by Mark Brian, <http://tinyurl.com/andersonfirem>



Columbia Fire Department Museum

Station 1, 1800 Laurel Street, Columbia, SC


www.columbiascfire.net/ColaFireMuseum.htm

Columbia Fire Department Museum

Station 1, 1800 Laurel Street, Columbia, SC

<http://www.columbiascfire.net/ColaFireMuseum.htm>

Photos from web site




Columbia Fire Department Web site

Welcome to The Columbia Fire Department's Fire Museum

Columbia Fire Museum:

The Columbia Fire Museum celebrates the rich history of South Carolina's largest fire department. Located downtown at Fire Department Headquarters, 1800 Laurel Street, it is near the historic Market Place, Old Market Square, and the historic "Old Market" home. Some of the exhibits date to the mid-1800's and include antique fire fighting equipment, an extensive exhibit, a photo history of fire fighting in Columbia.

Visiting the Museum

Individuals and groups are invited to visit anytime from 9:30 a.m. to 5 p.m., weekdays, excluding holidays. Admission is free. For more information or to schedule a guided tour, call (803) 744-1700 or click here: [Visiting the Museum](#)

Photographs of Exhibits

1860 Metropolitan Engine

Firefighter's Memorial

Fire Bell

1919 American LaFrance

Fire Alarm Clock

Shore Cam



North Charleston Fire Museum and Educational Center Includes American LaFrance Collection

4975 Centre Pointe Dr, North Charleston, SC

www.legacyofheroes.org

Photographed April 2007



**CELEBRATING 175 YEARS
OF MANUFACTURING
AMERICA'S FIRE APPARATUS**

- IS FULLY RESTORED AMERICAN LaFRANCE FIRE APPARATUS
- INTERACTIVE SAFETY EXHIBITS
- CHILDREN'S ACTIVITY CENTER

HOURS: Monday - Saturday 10 am - 5 pm
(Last ticket sold at 4 pm)

ADMISSION: Ages 13 and above - \$6
12 and under free with an accompanying adult

SCHOOL GROUPS • BIRTHDAY PARTIES • EDUCATIONAL TOURS

legacyofheroes.org • 843.740.5550

4975 Centre Pointe Drive • North Charleston, SC 29418
I-26 Coliseum Exit, #213

Also the location of the North Charleston Visitor Center
CharlestonCVB.com • 843.853.8000

Kentucky Fire Museums

Louisville Fire History & Learning Center

3228 River Park Drive, Louisville, KY 40210

www.louisvilleky.gov/LouisvilleFire/Fire_History_Learning_Center.htm

Vintage Fire Museum (featuring Fred Conway Collection)

723 Spring Street, Jeffersonville, IN 47130 (across river from Louisville)

www.vintagefiremuseum.org



Tennessee Fire Museums

Fire Museum of Memphis

118 Adams Avenue, Memphis, TN 38103

www.firemuseum.com



Georgia Fire Museums

Atlanta Old Fire Station No. 6

Boulevard Ave (Auburn Ave), Atlanta, GA 30312

www.nps.gov/malu/planyourvisit/firestation_no_6.htm



Fitzgerald Fire Engine Museum

315 East Pine Street, Fitzgerald, GA 31750

www.exploregeorgia.org/listing/1749-fitzgerald-fire-engine-museum



Marietta Fire Museum

Station 1, 112 Haynes Street, Marietta, GA 30060

www.mariettaga.gov/city/fire/museum



Norcross Fire Station No. 1 Museum

189 Lawrenceville Street, Norcross, GA 30071

www.norcrossga.net/index.aspx?NID=461



Roswell Fire Museum

1002 Alpharetta Street, Roswell, GA 30075

www.roswellgov.com/index.aspx?NID=208

Friendship Firehouse Museum

107 S. Alfred Street, Alexandria, VA 22314

<https://www.alexandriava.gov/FriendshipFirehouse>

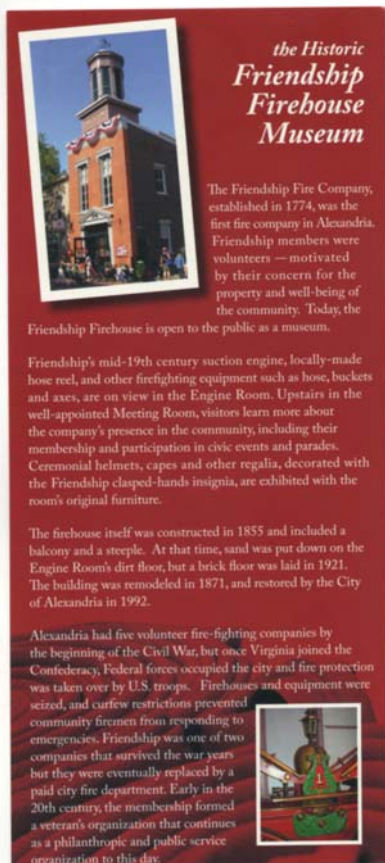


Friendship Firehouse Museum

107 S. Alfred Street, Alexandria, VA 22314

<https://www.alexandriava.gov/FriendshipFirehouse>

Photographed 2009



Friendship Firehouse Museum is located at 107 South Alfred Street in Alexandria. The site is open to the public from 1-4 PM on Saturdays and Sundays; closed on Thanksgiving, Christmas Eve and Christmas Day, and New Year's Day. The museum is owned and operated by the City of Alexandria, and managed by the City's Office of Historic Alexandria.

Museum contact information:

phone (703) 746-3891

fax (703) 838-4997

www.friendshipfirehouse.net



As an agency of the City of Alexandria government, the staff of Friendship Firehouse Museum comply with the terms of the Americans With Disabilities Act. Any individual who wishes to request an accommodation may call (703) 746-4994. Please provide at least seven calendar days' notice.

More in Virginia

Bedford Area Welcome Center

House fire department museum and restored 1927 Seagrave pumper
816 Burks Hill Road, Bedford, VA 24523



Blacksburg Fire Department Museum

Fire Station 2, 2700 Prices Fork Road, Blacksburg, VA
Includes 1880s American LaFrance ladder wagon and 1941 Chevy/Oren pumper

Harrisonburg Fire Department Museum

101 North Main Street, Public Safety Building, 3rd Floor
Harrisonburg, VA 22801
www.harrisonburgva.gov/hfd-museum



Lynchburg Fire Department Museum

Temporarily housed at 1201 Thurman Avenue, Lynchburg, VA
Open by appointment only
www.lynchburgfiremuseum.org



Keystone Tractor Works

880 W. Roslyn Road, Colonial Heights, VA 23834
Ten pieces of antique fire apparatus on display
www.keystonetractorworks.com

Norfolk Police & Fire Rescue Museum

401 E. Freemason Street, Norfolk, VA 23510
www.norfolk.gov/index.aspx?nid=163



Roanoke - Historic Fire-EMS Station 1

13 East Church Avenue, SE, Roanoke, VA 24011
Public education facility with antique apparatus
www.tinyurl.com/rfdstal



Staunton Antique Fire Engine

1911 Robinson pumper, oldest motor apparatus in Virginia
Fire Station 1, 500 N. Augusta Street. Staunton, VA



Baltimore City Fire Museum

414 North Gay Street, Baltimore, MD

www.facebook.com/Box414Association

Photographed 2009



Fire Museum of Maryland

1301 York Road, Lutherville, MD

www.firemuseummd.org

Photographed 2007



FIRE MUSEUM of Maryland

**FIRE MUSEUM
of Maryland**
1301 York Road, Lutherville, MD 21093
410-321-7500 • www.firemuseummd.org



The Museum is located behind the Heaver Plaza Office Building, just one block north of Exit 26B (York Road/Lutherville) off the Baltimore Beltway (I-695). Accessible via MTA Bus Line #8.

Explore the real thing...

- over 40 fire engines
- working fire alarm system
- children's discovery room

Open Saturdays, May through December
Wednesday-Sunday, June, July & August
HOURS:
Wed.-Sat., 10 a.m. - 4 p.m.; Sun., 1-4 p.m.

APPARATUS DEMONSTRATIONS:
1st Sat. in May - Hand & Horse-Drawn Show
2nd Sat. in Sept. - Motor Driven Show

CALL FOR DETAILS OR CHECK WEB SITE

- * Group Tours
- * Facility Rentals
- * Birthday Parties
- * Fire Engine Rides
- * Memberships available at many levels

www.firemuseummd.org

Frederick County Fire & Rescue Museum

300B S. Seton Ave, Emmitsburg, MD 21727

www.frederickmdfiremuseum.org



Frederick County Fire & Rescue Museum

Home Application Contact

Search: [] Saturday, July 05, 2014 5:30:41 PM

Welcome to the Museum

As you "Walk Through the History of the Frederick County Fire & Rescue Service", you will find artifacts, pictures, and apparatus that tell the story of the individual companies and the many members of the county fire and rescue service.

Main Menu:

- Home
- Application
- Events
- Photo Gallery
- Academy Students
- NFHC
- Contact
- Links
- Sitemap

Welcome

Frederick County Fire & Rescue Museum
1911 Only
Emmitsburg, Maryland

Frederick County Fire & Rescue Museum

300B S. Seton Ave, Emmitsburg, MD 21727

www.frederickmdfiremuseum.org

Photos from web site



More in Maryland

Chesapeake Fire Museum

27013 Lillian St., Hebron, MD 21830

Ellicott City Firehouse Museum

3829 Church St., Ellicott City, MD, 21043

www.howardcountymd.gov/ellicottcityfirehousemuseum.htm

Gaithersburg - Washington Grove V.F.D. Fire Museum

13 E. Diamond Ave, Gaithersburg, MD 20879

www.gwgvfd.org/museum.cfm

Photographed 2010



About the Fire Museum Network

Dore Miskolc

The Fire Museum Network is a nonprofit entity that provides a means for networking among fire museums and promotes the interests of those dedicated to collecting, preserving, and interpreting the artifacts, history, and traditions of the fire service. The Network is incorporated in the State of Wisconsin, and is a 501(c)(3) non-profit organization.

Our Goals

TO EDUCATE

FAMN sponsors a multi-day seminar each year in a different host city to educate fire museum professionals and other interested individuals about fire service history, proper museum techniques, and other key topics important to the museum community at-large.

TO PROVIDE A NETWORK

FMIN strives to be the leader in providing an internet-based forum for fire museums and fire service supporters through our comprehensive web site: www.firemuseumnetwork.org and other publications sent to its members.

TO SERVE AS A PRESERVATION RESOURCE

FMN seeks to preserve the rich history and traditions of the fire service. The officers, directors, and members collectively form an

enormous base for information, including research, grant request support, collections analysis and other technical information

Benefits of Membership

DISCOUNTS
Members receive registration discounts to the annual seminar.

Full Access

Members receive access to a special section of the FMN web site, as well as access to top museum professionals in the field.

GRANTS

Members receive opportunities for grants to the annual seminar and other special FMN events.

Membership

Membership is open to any museum or individual dedicated to collecting, preserving or interpreting the artifacts, history and traditions of the fire service.

For More Information
Visit www.mhfi.com

Visit our website:
www.firemuseumnetwork.org

Note that a "Google"⁸ search for "fine museums" returns the FMN in the top three results, providing excellent exposure for your organization.

Mail Contact:
Fire Museum Network
2912 S Otis St
Denver CO 80227

Join Today

Complete the application below and send, along with a check for \$30.00 made payable to the "Fire Museum Network" to the address above.

I wish to join the Fire Museum Network and contribute to the preservation of the traditions of the rich history of the fire service.

Membership Name

Contact Person, if an organization

Museum Affiliation, if any

Address

City, State, ZIP

Telephone/FAX

Email/website address

Fire Museum Network, Inc.
2912 S Otis ST
Denver CO 80227
www.firemuseumnetwork.org

