

Fires in Historic Oakwood

Compiled by Mike Legeros

Version 7.1 – November 12, 2014

See one-page summary of this data at <http://www.legeros.com/ralwake/raleigh/history/writing/historic-oakwood-fires-summary.pdf>

Contents

- Introduction
- Historic Oakwood
- Historic District
- Fire Data
- Other Information
- Sources
- Index of Fires

Introduction

This document attempts to answer the question “how many fires have occurred in Historic Oakwood?” The data is presented below, and split into five tiers:

1. Building burned down or demolished after fire.
2. Major fire.
3. Working fire, but not a major fire.
4. Outbuilding, such as a garage or barn.
5. Unconfirmed fire, missing date or street address.

Plus a couple other lists of fires, addresses, and errata.

Historic Oakwood

Refers to both a National Register of Historic Places district and a local historic district. There are 591 main buildings in the national district, and 509 in the local district. For the purposes of this document, “historic Oakwood” refers to either district. This document also includes outbuildings in addition to main buildings. These numbers and just about every piece of building information comes from Oakwood Historian Matthew Brown. His contributions to this research are invaluable.

Historic District

The district is defined as these blocks and building numbers. See also the interactive map on the Historic Oakwood [web site](#):

Bloodworth St.	100 S. thru 0 S. 0 N. thru 800 N.	Lane St.	300 E. thru 600 Plus 701, 703, 705	Pell St.	300
Boundary St.	300 N. thru 600 N.	Latham Way	600	Person St.	100 N. thru 500 N. east side only Plus 401 and 407.
East St.	100 S. 100 N. thru 700 N.	Leonidas Ct.	600	Polk St.	300 thru 600
Edenton St	300 E. thru 400 E.	Linden Ave.	200 thru 300	Watauga St.	500 Plus odd numbers of 600
Elm St.	200 thru 700 800 west side only	Morson St.	400		
Euclid St	500	New Bern Avenue	400 Plus 501		
Franklin St.	400 E. thru 700 E.	Oakwood Ave.	300 thru 600 Plus 701		
Jones St.	300 E. thru 500 E.	Pace St.	300 thru 500		

Exceptions?

The property of 215 E. North also appears to be part of the district.

Prior Street Names

- 600 block McGruder - Changed to Elm.
- 400 block E. Morgan - Changed to Morson.
- N. Swain - Changed to Watauga.

Fire Data

Inclusion/Exclusion from This List

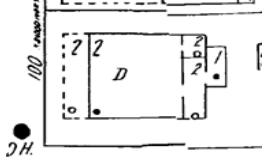
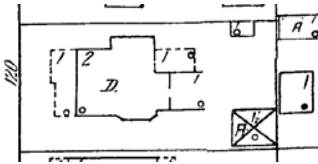
- Residential or commercial structures, or outbuildings larger than an outhouse (kitchen, garage, barn, etc.).
- Significant fires only. Excluded are chimney fires, “pot on stove,” many mattress or “smoking in bed” fires that resulted in small damage, and outdoor brush and vehicle fires.
- Including “room and contents” or greater.

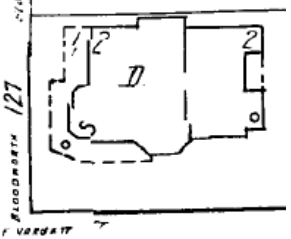
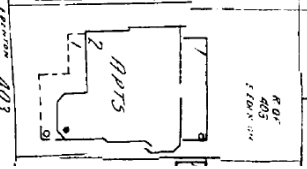
- “Code 2” fire or “working fire” in more recent language, in most cases.
- “Confirmed fire” means that there’s either written documentation or physical evidence that a fire occurred.
- What constitutes a “major fire?” For early fire reports (1960s and earlier), three or more lines used. In more recent language, “Code 3,” or “major working fire,” or second alarm fire.


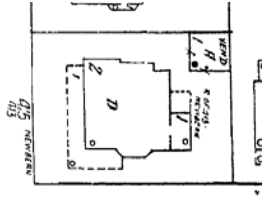
What’s the threshold for damage amount?

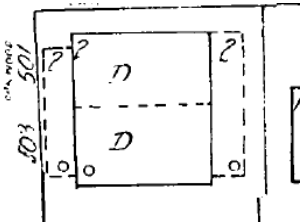
- Good question.
- First, we must note that “loss” means amount not covered by insurance. Different amount than “damage.”
- For dollar amount, let’s use \$500 or greater for the 1920s through 1940s, \$1000 or great for 1950s through 1960s.

Fires That Destroyed Buildings – Tier 1

Address	Cross Street(s)	Date	Building Then	Building Now	Damage	Notes
100 N. Bloodworth	Edenton	Jul 5, 2001	House (2s), ca. 1905 Sanborn, 1950: 	Prado-Zink House (2s), 2004-05 Single-Fam	Destroyed	Boarding house. Dispatched 1400, E1 arrived 1403, E1 cleared 1911. Units included E1, E13, E7, T1, R6, C52. Code 2 house fire. Heavy fire on second floor and attic. Started in front left room on first floor. (MJL/RFD) WRAL story.
120 N. Bloodworth	Edenton	Jan. 10 1978	House (2s), built by 1950 Sanborn 1950: 	George & Nell Kahdy House (1s), 1981 Single-Fam	Destroyed	Engine 3 first due dispatched 0214. Cleared 0518. Home served as boarding house. Arriving units found fire in both stories and roof. Home valued at \$22,000. Five occupants who all escape without serious injury. Three engines, two ladders, one rescue fought fire for two hours. House was valued at \$22,000 and was total loss. ‘It was burnt to the ground’ said a neighbor. (RT, 1/?/78)

127 S. Bloodworth	Hargett	Apr 10, 1992	House (2s), built by 1992 Sanborn 1950: 	Vacant lot	Destroyed	Two alarms. Engine 3 first due, dispatched 0422, arrived 0424, cleared 1138. Code 3 fire. Vacant building, formerly housed non-profit ReEntry. Heavy damage to attic area. Arson/incendiary, started under a first floor stairwell. Building "gutted". (N&O, 4/11/92; MJL/RFD)
521 N. East	Euclid	Jun 27, 1904	Still looking Residence of Raleigh E. Barnes	Rowlett E. Barnes House (2s) c.1904	Destroyed	Alarm received at 9:50 p.m. from Box 12. All four companies respond. Three streams and 2,400 feet of hose used. Caused by lightning. (MJL/RFD)
403 E. Edenton	East	July 23, 1978	House (2s), built before 1978 Sanborn, 1950: 	Prado-Hilbert House (2s), 2005 Single-fam	Destroyed	Reported about 5:30 p.m. Engine 3 first due, dispatched 1733, arrived 1734, cleared 2117. Eight tenants inside at the time of the fire, three rescued by firefighters using ladders. No serious injuries. One resident helped from the second floor said she heard someone screaming to get out of the house. "When I opened the door to go downstairs, smoke rushed in. There was no way I could get downstairs."
Five fire companies battled the flames for "over two hours." Firefighter George Jones was overcome by smoke and "had to be helped down the ladder." Converted to apartments, most of structure destroyed. Fire apparently started in rear of house.			Said a neighbor watching the fire "There were people coming down the ladders. It scared me to death. I like to went crazy."	Cause suspected as kids playing with smoking materials. (N&O, 7/24/78, MJL/RFD)		

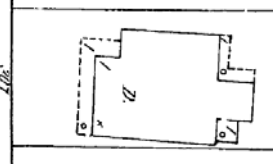
500 E. Franklin	East	March 6, 1992	The Gospel Chapel (1s), 1935 Sanborn 1950: 	House (2s), 1995 Addressed 502	Destroyed	Two alarms. Dispatched 0229. E3, E7, T1, R7, C52. Code 2 to Code 3 at 0247. E1, E13, T8, R6, C51, SR 1, C1, C2, C3, C5, C10, C12. E16 relief, E19 relief. The church was built in 1935, with additions in 1955 (MJL/PU, N&O 3/6/92)
537 E. Jones Parcel now addressed 200 Elm	Elm	Apr 29, 1982	House (2s), built before 1982 Sanborn 1950: 	Michael Weeks House (2s), 1986 Single-fam	Major Damage	Four people killed, three family members (ages 45, 16, and two) and a boarder (age 40). One of deadliest fires in city's history. Dispatched at 4:05 a.m. Engine 3 first arriving at 4:07 a.m. Found front of building—a house divided into four apartments—fully involved, and heavy smoke coming from all openings. Crews contained fire within 45 minutes. Victims found in two bedrooms in upstairs apartment. They were overcome by smoke. Two other residents jumped from second floor. One transported with burns to UNC burn center with second and third degree burns and smoke inhalation, the other to Wake Medical Center for inhalation and minor burns.
<p>Probably cause was portable electric heater, which burned hole in floor, and fell into first-floor entranceway. There was a motorcycle parked in the hall. The fuel line burned, spilling gasoline into the front of the house. The flames from the fuel jumped to the second floor.</p> <p>N&O carrier outside “heard a pop and looked back and saw fire coming out of the lower right section.” He tried to “rouse someone” at the house and at several others nearby, but “got no answer.” He “flagged down a taxicab” who radioed the dispatcher to call the fire department.</p> <p>The newspaper reported criticism of firefighters by neighbors for not trying to save the victims.</p> <p>Arriving Captain J. C. Munns told the News & Observer that he “immediately radioed the second truck to have firefighters ready [with breathing masks] to attempt a rescue.”</p> <p>But they couldn’t enter the building. “The intense heat alone drove [us] out.” He added “People think someone can walk right in. You just can’t.”</p> <p>The house had been cited by structural and electrical violations in December, but was in compliance when inspected in January.</p> <p>House was estimated to be worth \$40,000 to \$50,000. (RT, 05/1/82)</p>						

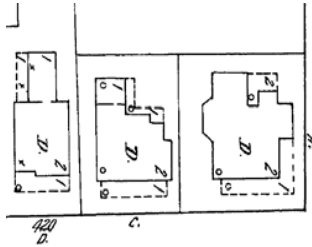
501 Oakwood Addressed 503 Oakwood in fire records	East	Nov 3, 1999	House and store (2s), ca. 1907 Originally twin storefronts with dwellings above them Sanborn, 1950: 	Stuart Cullinan House (2s), 2012 Single-fam	Destroyed	Two alarms. Two-story wood frame building fully-involved. Truck 1 flowing. E7, E3, E1, T1, R6, C52, SR5, C5, special call E13. Second alarm: E5, E20, T11, R21, C51, C2, C3, C1, special call E11, overnight watch: E4. House was being renovated. Entire house was aflame, including flames shooting out second story windows. Damage also to exposures (buildings) on either side of fire. House was total loss. One firefighter transported with burns to hand. (MJL) “As the bottom and top of the building were open, and it was all made of pine, the flames spread instantly, and soon shot up forty feet in the air, visible all over Oakwood. The fire department [arrived] quickly, but made no attempt to save the building. They rather trained all their hoses on the two adjacent houses, to keep them from catching fire. The heat of the fire cracked the windows on those houses. About 100 neighbors watched the fire.” “Building caught fire under suspicious circumstances, but no arson charges were filed.” (MMB)
--	------	----------------	---	---	-----------	--

Major Fires – Tier 2

But that didn't result in the building's demolition, as far as can be determined.

Address	Cross Street(s)	Date	Building Then	Building Now	Damage	Notes
800 N. Bloodworth	Franklin	Dec. 21, 2008	Briggs-Argo-Aycock House (2s), ca. 1881	Same Single-fam	Major damage presumed	Engine 3 arrived and found nothing showing. After walking around fire was found in rear corner of structure. Fire was contained to point of origin, Christmas ornament close to a wall. Electrical malfunction as cause. Damage estimated \$2,500. Dispatched 0649, arrival 0653, cleared 0751. E3, Units included E1, E13, E7, L1, R7, B2, A8, C20, C5. (RFD/FRWP) WRAL story

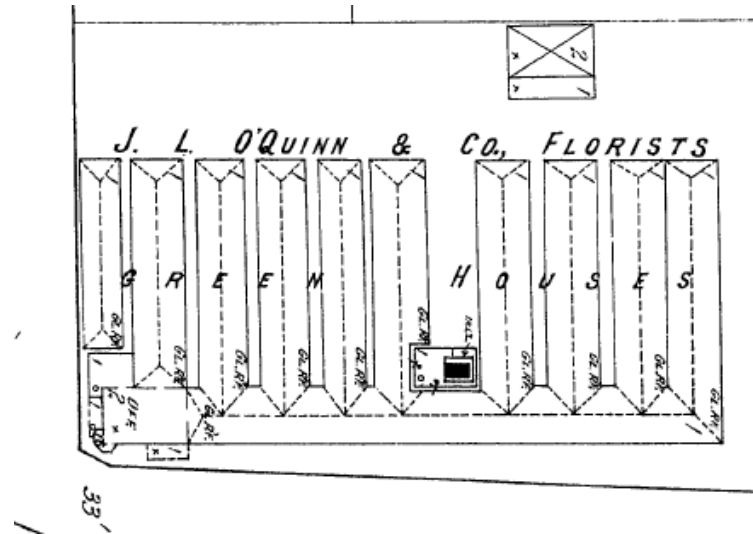
307 E. Edenton	Person	Jan 3, 1927	House (1s), built by 1914 Sanborn, 1914: 	Parking lot	Likely major damage	The 7:50 p.m. alarm is transmitted from Box 18. Three lines and 950 feet of hose are used on the one-story, frame structure. Loss \$2,300. (MJL/RFD)
516 Jones	Elm	April 18, 2012	Thompson-Anderson-Allen House (2s), c.1851	Same Single-fam	Major damage	Engine 3 arriving with heavy fire showing through roof in the rear. Interior operations followed by Ladder 4 flowing into roof and attic space. Dispatched 0147, controlled 0407. Half of building damaged. Cause determined as accidental due to unspecified electrical failure. Units on scene included E3, E1, E13, E7, E17 (special called, was likely covering at Station 1), L4, R2, B2, A1, C10, C20, C40. (MJL) Read blog post . Second oldest house, largest in Oakwood.
312 Linden	Oakwood	Dec. 21, 1979	Hightower-Lambert House (2s), c.1909	Same Four apts	Heavily damaged	Fire started about 6:20 p.m. in apartment of Clarence Cheatham, who told firemen "he left some grease on the stove while he momentarily left the kitchen, and when he returned the room was one fire." Engine 3 first due, dispatched 1823, arrived 1825, cleared 2148. Code I, condition red. Fire coming out of windows in upper story. Used three 1.5 inch lines and two booster lines. Fire prevented from spreading to other three apartments. Estimated damage \$10,000. (N&O or RT, 12/21/79)
312 N. Person	North	Jun 23, 1890	Marcellus Parker Kitchen (1s), c.1880	House (1s), 1901 Single-fam	Presume major	Alarm received at 10:45 p.m. from Box 24. Hose Company No. 5 responds. Two-story frame dwelling owned and occupied by Jos. R. Ball. Caused by lightning. (MJL/RFD)
530 N. Person	Pell	April 12, 1942	Charlotte Montgomery Williamson House (2s), c.1898	same	Likely major damage	Fire #1 of 2 The 3:15 a.m. alarm is transmitted from Box 13. Three lines and 1,550 feet of hose are used. Loss \$2,600. (MJL/RFD)

404 Polk St	Bloodworth, East	Apr 4, 1943	<p>House (2s), built before 1970</p> <p>Sanborn 1914 shows likely one of these two-story buildings:</p> 	Empty lot	Likely major damage	<p>Fire #1 of 2</p> <p>The 5:00 p.m. alarm is transmitted from Box 12. Three lines and 850 feet of hose are used. \$1,221 loss. (MJL/RFD)</p>
407 Polk Street	East	Feb. 18, 1958	Polk St. Moser-Dudley House (1s) c.1907	Same Single-fam	Major Damage	<p>Fire #1 of 2</p> <p>Two-family residence owned by Mr. and Mrs. Harvey Thorne. Started about 6:45 a.m. Second floor severely damaged.</p> <p>The fire apparently started in the basement and spread to the second story along the chimney. Reported the newspaper, "firemen were forced to fight the blaze from the attic entrance."</p> <p>Five fire companies battled the blaze. They were handicapped by freezing temperatures, which "quickly turned water into sheets of ice" and made "footing" difficult on the ladders. (RT, 2/18/58)</p> <p>Firefighter Claude Johnson broke his leg after leaping over a fence and falling on ice. His leg was later amputated. He became a fire department dispatcher, unable to return to firefighting. (MJL)</p>
625 Polk	Watuaga	Apr 2, 1939	Greenhouse(s) (1s), built ?	Three houses, 621 Polk and 505 and 509 Watuaga	Likely major damage	<p>The 7:20 p.m. alarm is received by telephone. Three lines and 1,800 feet of hose are used. Loss \$1,110. (MJL/RFD)</p> <p>Sanborn Maps in 1914 show J. L. O'Quinn & Company florist on corner. Building occupied about a third of block. Mostly greenhouses, with two-story office building on corner.</p> <p>The 1950 map shows Fallon Florists on entire block of Watuaga, from Polk to Boundary. Mostly greenhouses, with one-story (?) building in center of block.</p>

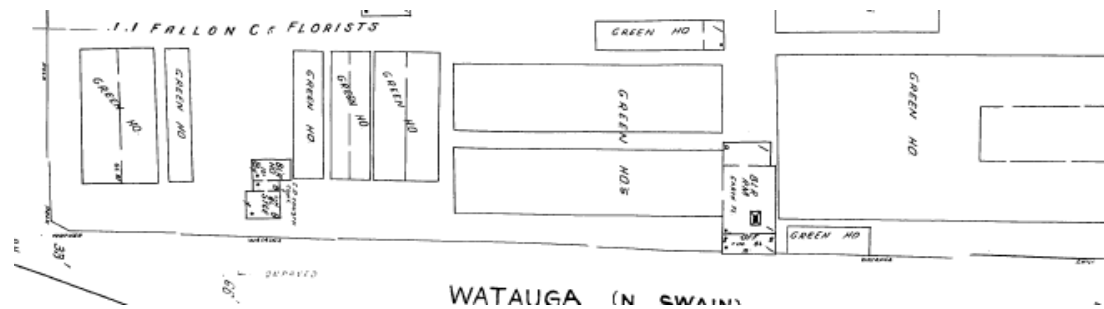
Sanborn Maps

Map excerpts for 625 Polk:

Sanborn 1914:



Sanborn 1950:



Working Fires – Tier 3

Less than major damage, or damage amount unknown:

Address	Cross Street(s)	Date	Building Then	Building Now	Damage	Notes
216 N. Bloodworth	Jones, Lane	Dec 10, 1993	Heck-Fowle House (2s), c.1875	Same Single-fam		Engine 3 first due, dispatched 0839, arrived 0840, cleared 1003. Dispatched as smoke investigation, Code 1 on arrival with/later working fire. (MJL/RFD)
222 N. Bloodworth	Lane	Feb. 12, 1957	Lee & Broughton Grocery (1s), c.1901 Barnes Grocery at time of fire.	Same Now Oakwood Bakery & Sweet Shop.	Stockroom, attic	Fire starts just after noon. Firefighters save main part of store after blaze rages through adjoining stockroom and in attic. Damage estimates \$5,000 to \$6,000. Store is one of Raleigh's oldest neighborhood grocers. (NO, 2/13/57)
307 N. Bloodworth	Lane, Oakwood	Jan 1, 1994	Horton-Page house (2s), ca. 1914	Same Four apts.		Engine 3 first due, dispatched 1749, cleared 2000. Units included E3, E1, E13, T1, R7, C52, C5. Code 2 house fire. Fire controlled in approximately 30 minutes. (MJL/ RFD)
517 N. Bloodworth	Pell, Polk	Apr 9, 1977	St. Jacob S. Allen House (2s), c.1898	Same Single-fam		E3 first due, dispatched 0126, arrived 0128, cleared 0426. Code red. One firefighter transported with slight burns. Fire possibly set. (MJL/RFD)
809 N. Bloodworth	Holden	Jun 30, 1996	Barnes-Gattis House (1.5s), c.1900	Same Four apts		E3 first due, dispatched 0335, arrived 0340, cleared 0528. Code 2 fire. (MJL/RFD)
117 S. Bloodworth	Morson, Hargett	Dec. 2, 1890	House (1s), built by 1890	Vacant lot, part of 125		Alarm received at 6:15 p.m. from Box 26. Bucket and Ladder Company responds. One-story frame dwelling owned by W. R. Blake and occupied by J. R. O'Neil. Caused by chimney on fire. (MJL/RFD)
10 N. East	Edenton	Nov 26, 1987	Montague-Webb House (2s), c.1915	Same Single-fam		Dispatched 0903, arrived 0906, cleared 1142. Including E3, E7, others. Apartment fire that spread into attic. Started in front upstairs room. (MJL/RFD)
16 N. East	Edenton	Dec 23, 1993	Montague-Marshall House (2s), c.1915 Originally addressed 14 and 16 East	Same Group home		Engine 3 first due, dispatched 0128, cleared 0338. Included E3, E7, T1, R7, C52. Code 2 apartment fire at rooming house. Fire confined to one room and hallway. Intentionally set. (MJL/RFD)

116 N. East	Edenton, Jones	Oct 12, 1972	Peter Francis House (2s), ca 1872	Same Two apts		Fire #1 of 2 Dispatched 0257, first arrival 0259, last cleared 0456. Including E3, E7, T7. \$1,000 loss. Unoccupied at time of fire. (MJL/RFD)
116 N. East	Edenton, Jones	May 12, 1988	Peter Francis House (2s), ca 1872	Same Two apts		Fire #2 of 2 Engine 3 first due, dispatched 0433, arrived 434, cleared 0711. One firefighter injured, fingers and lower back. House had been converted to upstairs and downstairs apartments. \$13,000 damage. Started by cigarette. (MJL/RFD)
405 N. East	Oakwood	Jan 10, 2010	May Budd House (1.5s), ca. 1921	Same Single-fam	Minor damage	Ladder 4 arriving with light smoke showing. Engine 1 found smoke coming from crawl space. Fire found under house and extinguished with booster line. Crews checked for extension inside and found areas starting to burn near heat ducts. Source traced to heat system located in crawl space. Controlled in about twenty minutes Walls, flooring, and siding removed in several places during overhaul. Fire watch established until about midnight to ensure no rekindle. Dispatched 1437, arrived 1441, cleared 2155. Units included E1, E13, E7, E3, L4, R2, B2, C10, C20, A1, L2 for relief; EMS13, EMS2, EMS8, D1, T1. "A" shift. (WRAL, MJL, RFD/FRWS) WRAL story
533 N. East	Boundary	May 29, 2000	M. Ashby Lambert House (1s), c.1923 Address 531 at time of fire. House previously addressed 531 and 533, as a duplex.	Same Single-fam		Engine 3 first due, dispatched 1952, arrived 1956, cleared 2131. Code 2 fire. Contained to a bedroom in one apartment. Started from overloaded electrical outlet. Includes E3, E1, E13, T1, C52. (MJL/RFD)
534 N. East	Boundary	Sep 22, 1959	Lambert-Shepard House (1s), c.1924	Same Single-fam	Modest damage	Engine 3 (only unit?) dispatched 5:10 p.m. Found trash burning behind stove. \$4,200 loss to building, \$10 loss to contents. (MJL/RFD)
216 Elm	Jones, Lane	Mar 31, 1994	Yates-Jackson House (1s), ca. 1915	Same Three apts		Engine 3 first due, dispatched 2224. Cleared 0004. Code 2. Fire in floor, walls, ceiling. Includes E3, E1, T1, R7, C52, plus E16, T8 relief. (MJL/RFD)
229 Elm		Dec 10, 1983	Darnell-O'Connor House (2s), c.1908	Same Single-fam		E3 dispatched 2118. Working fire on second floor in rear of apartment building. Including E3, E7, T12, C52. (MJL/RFD)

306 Elm	Lane, Oakwood	Feb 5, 1991	Womble-Penven-Crew House (2s), 1908	Same Single-fam		Engine 3 first due, dispatched 155, arrived 158, cleared 536. Code 2 fire. Fire contained to one apartment. Occupant transported for observation. Caused by microwave oven. (MJL/RFD)
416 Elm	Oakwood, Polk	Nov. 10, 1908	Pullen-Meacham House (2), c.1888	Same Single-fam	Modest damage	Fire reported about 11:00 a.m. Started on back porch by bucket of ashes. Rear of house destroyed. Loss about \$300. (N&O, 11/11/08)
605 ½ Elm	Boundary	Aug 26, 1971	Jane Pescud Withers House (1s), c.1911	Same Two apts		Fire #1 of 2 Engine 3 first due, dispatched 0603, arrived 0607, cleared 0742. Rear of house in flames. Used 1 1/2-inch and booster lines. (MJL/RFD).
605 ½ Elm	Boundary	Nov 15, 1971	Jane Pescud Withers House (1s), c.1911	Same Two apts		Fire #2 of 2 Vacant at time of fire. Engine 3 first due, dispatched 0134, arrived 0136, cleared 0258. Fire in back room. Included E3, E7, T7. Loss \$1,000. (MJL/RFD)
704 E. Franklin	Watagua	October 10, 2011	Earl & Pearl Fry House (1s), 1949	Same Single-fam	Moderate ? damage.	Engine 3 arriving with heavy smoke coming from ridge vent and rear of house. Fire found coming from back door. Bulk of fire found in kitchen with some extension to roof. Access issues due to amount of personal belongs in kitchen. Dispatched 1306, arrived 1310, cleared 2022. Mini 3 remained on scene for restoration company, and Engine 3 returned about 2030 to perform final walk through with thermal imaging camera. No hot spots found. Units on scene included E3, E1, E13, E7, L4, C20, E16 and E21 (special called for relief?), M3. (RFD/FRWS)
304 E. Jones	Person	Mar 23, 1973	St. Lewis-Joyner House (2s), 1878	Same Single-fam		Dispatched 1542, first arriving 1544, last cleared 1648. Mattress involved. Loss \$1,628. Units included E3, E7, T7. Truck 7 used two Scott air packs, three salvage covers, two smoke ejectors, three cords, two mops, two brooms, one shovel, and one squeegee bucket. (MJL/RFD)
312 E. Jones	Person, Bloodworth	Mar 13, 1896	Lewis-West-Uzzell House (2s), ca. 1878	Same Single-fam + apt	Modest damage	Residence of E. M. Uzzell, printer. Owned by N. W. West. Fire between roof and ceiling, with little damage to lower part of house. "Badly damaged" reported paper. (N&O, 3/13/96)

315 E. Jones	Person, Bloodworth	July 23, 1976	Fabius H. Busbee House (2s), ca. 1901	Same Law offices	Room and contents	Rooming house. Started about 10:00 a.m. from cigarette left burning in ashtray. Guttled one second-story bedroom. Damage estimated at \$2,000. Engine 3 first due, dispatched 1005, arrived 1007, cleared 1206. One resident, asleep upstairs, was awoken by shouting. "The smoke was so thick I had to feel my way out of the bedroom and down the stairs." Said Doris Ann Scott, a cook, tried to go upstairs, to warn the "boys upstairs," but the smoke was too thick. She returned to the kitchen, "cut off the stove," and then called the fire department. "Annie F. Johnson was rounding the corner [...] when she spied smoke billowing out of an upstairs window of her burning house." "Lord God, my house is on fire" she remembers saying to herself at the time. (RT, 7/23/76; MJL/RFD)
404 ½ E. Lane		Oct 18, 1977				E3 first due, dispatched 1532, arrived 1532, cleared 1757. Code red. Apartment fire. Includes E3, E7, T7, R.
501 E. Lane	East	Jul 22, 1972	Raleigh Christian & Missionary Alliance Church (1s), c.1939 Boys Club at time of fire.	Same		Dispatched 0349, cleared 552. Units included E13, E15, T1. Loss \$4,788. (MJL/RFD)
609 E. Lane		Jul 9, 1986				Engine 3 first due, dispatched 0150, arrived 0152, cleared 0255. Working house fire. Includes E3, E7, T1, R7.
202 Linden	Jones	Sep 16, 1970	John A. Mills House (2s), c.1920	Same Duplex		Fire #1 of 3 Engine 3 first due, dispatched 0118, arrived 0119, cleared 0253. Extinguished with 1 ½-inch line. Fire originated in and confined to downstairs bedroom. (MJL/RFD)
202 ½ Linden	Jones	Jul 18, 1974	John A. Mills House (2s), c.1920	Same Duplex	Modest damage	Fire #2 of 3 Engine 3 first due, dispatched 0322, cleared 0556. Fire in living room and back bedrooms. Intentional. (MJL/RFD)

202 Linden	Jones	Mar. 20, 1984	John A. Mills House (2s), c.1920	Same Duplex	Modest damage	<p>Fire #3 of 3</p> <p>Engine 3 first due, dispatched 1015, arrived 1016, cleared 1217.</p> <p>Fire started in front of house on first floor. Cause was electrical outlet supplying a radio and a heater.</p> <p>Flames “ignited the baseboard, then set the curtains on fire, trailed up the wall and out a large bay window” said the fire investigator.</p> <p>The upstairs was “beginning to smolder” when 16 year-old Casey King was watching television. He smelled smoke, stepped out on the front porch, and saw flames “flaring from the second story.”</p> <p>Damage \$10,000 to \$20,000. Owner was planning renovations soon.</p> <p>Building was converted boarding house. Nine or ten people were displaced. One resident was taken to the hospital for smoke inhalation. Linda Hold and her son Casey were only tenants who were home. (RT, 3/20/84; N&O, 3/21/84)</p>
216 ½ Linden		Dec 28, 1984				E3 first due, dispatched 1923, arrived 1926. Working house fire (in building with two apartments), with fire in downstairs apt. Including E3, E7, T1, R7, C52. (MJL/RFD)
218 Linden	Lane	Jan 17, 1931	William P. Matthews House (1s) c.1909	same Two apts		The 9:40 a.m. alarm is received by telephone. Three lines and 1,200 feet of hose are used on the one-story, frame structure. \$800 loss. (MJL/RFD)
416 E. Morgan		Jan 16, 1977			Minor damage?	E3 first due, dispatched 0823, arrived 0823, cleared 0911. Fire in attic. Includes E3, T7.
405, 407 New Bern	Bloodworth	Jun 20, 1993	Annie Hoover Browne House (2s), c.1914	Same Duplex	Major damage	<p>Two alarms.</p> <p>E3 first due, dispatched 2216, arrived 2217, cleared 0304. Units on scene were E3, E1, T1, R7, C52 on first alarm, E13, E7, T11, R6, C53 on second alarm.</p> <p>Four apartments in building. Started in attic, with flames through roof and eventual roof collapse. Controlled by 11:00 p.m.</p> <p>Fire appeared to be intentional. (MJL/RFD, MJL/PU, N&O, 6/21/93)</p>
408 New Bern	East, Bloodworth	Oct 19, 1970	Effie Willis Choplin House (2s), c.1920	Same Rooming House	Modest damage	Verbal alarm at 1:28 a.m. for Engine 3. E1, T1 dispatched 1:34 a.m. Kate Hearn owner/occupant. Wood frame house. \$2,100 loss. (MJL/RFD)

415 New Bern	East	Jan 28, 1988	Vivian E. Denton House (2s), c.1912	Same Single-fam	Room and contents	E3 first due dispatched 1433, arrived 1435, cleared 1555. Code 1 fire, with booster line used. Gutted one room. Fire started from electric heater too close to chair. E3, E1, T1, R7, C52. (MJL/RFD)
315 Oakwood	Person, Bloodworth	Feb 18, 1977	Miriam Carson Williams House (2s), c.1883	Same Single-fam		E3 first due dispatched 1116, arrived 1119, cleared 1256. Code red fire in attic. Includes E3, E7, T7, R. Engine 3 laid feeder line and attacked from exterior. Engine 7 used other 1 ½" line from Engine 3 and attacked interior. Truck 7 laddered building. Minor damage, recorded in E3 log book. E7, T7 returned to station and found rear window on apparatus floor broken and station burglarized. (MJL/RFD) Fire damaged beams and floor in attic. (RT, 2/18/77)
515 Oakwood	East, Elm	Oct 12, 1991	Love-Goodwin House (1s), c.1894	Same Single-fam	Modest damage	E3 first due, dispatched 1458, cleared 1629. Included E3, E7, T1, R7, C52, SR5, C98, C12. Code 2 fire in attic. Fire started on porch area. (MJL/RFD, MJL/PU, MMB)
216 N. Person		Sep 12, 1988	Mansion Square Inn (2s) Building demolished c. 1995 by NC Medical Society.	Vacant lot		Engine 3 first due, dispatched 2118, arrived 2119, cleared 2251. Code 2 house fire. Includes E3, E1, T1, R, SR1.
618 N. Person	Pace	October 11, 2007	Store (1s), 1925	Same	Modest damage	Engine 3 arriving with fire found in a window beside the entry door. Fire found inside and between metal ceiling and roof. Investigator requested due to suspicious nature. Building was divided into three occupancies. Fire building was vacant and without power. Adjoining occupants included Conti's Restaurant. Dispatched 0937. Arrived 0940. Controlled 1030. Cleared 1254. Units included E3, E1, E13, E7, L1, R7, B2, B1, C5, A8, special E3, E5 for manpower, relief E4, L23. Damage \$50,000. (MJL, RFD/FRWS)
325 Polk St.	Blooworth	Jan. 27, 1985	Justice Walter Clark House (2s), c.1896	Same Single-fam	Moderate?	The residents returned home one evening to find two fire engines in front of their home, and some streaming out of the front door. (MMB) Engine 3 first due, dispatched 2015, arrived 2018, cleared 2231. Fire caused by electrical short in kitchen and dining area. (MJL/RFD, MMB)
502 Polk	East	Sep 30, 1972	St. Allcott-Thompson House (2s), c.1890	Same Single-fam		Dispatched 9:31 a.m. Cleared 11:23 a.m. E3, E7, T1. Loss \$1,000. Caused by "leaves." Unoccupied at time of fire. (MJL/RFD)

608 Polk Street	Elm, Watauga	Apr 19, 1909	Margaret Young House (1s), 1897	Same Single-fam	Moderate	Reported at 9:30 a.m. from Box 12. Fire started in kitchen, "probably from a coal of fire dropping from the cook stove." When discovered, fire had "made great headway and the kitchen was past saving." Kitchen and dining room were "left a total wreck." Heavy water damage to other rooms. (RT, 4/20/1909)
614 Polk	Watauga	Jun 6, 1961	Jesse L. O'Quinn House (2s), c.1909	Same Four apts		Engine 3 as only unit (?). ouch involved. Loss \$1500.

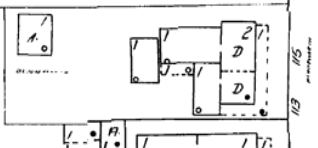
Outbuildings – Tier 4

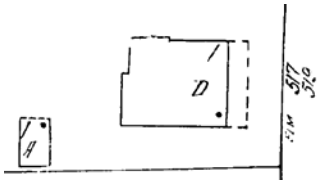
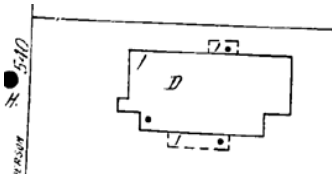
601 N. Bloodworth	Boundary, Pace	Jan 19, 1893	Anna Ball Stronach House (2s), c.1878 Servant's house burned	Same Single-fam	Servant's House Destroyed	Between 8 and 9 a.m., fire reported in small house occupied by servants at the residence of W. C. Stronach. Housed burned down, but did not extend to Stronach's residence.
600 N. Boundary		Oct 17, 1985	John G. Pearson House (1s), c.1927 Fire in garage.	Same Single-fam		Engine 3 first due, dispatched 1329, arrived 1331, cleared _____. Vacant (house?). Included E3, E7, T1, C52 (MJL/RFD)
112 N. East	Edenton, Jones	Sep 12, 1915	Samuel Glass House (2s), 1916 Barn burned	Same Single-fam	Barn destroyed	Fire reported from Box 213 about 4:30 p.m. Destroyed barn and pony belonging to Mr. S. Glass. (N&O, 9/13/15)
223 Elm	Jones, Lane	Oct. 24, 1941	Wilkinson-Wishy House (1s), 1899 Garage burned	Same Three apts	Likely major damage	Garage at one-story frame building owned by Meredith College. The 3:39 p.m. alarm is received by telephone. Three lines and 1,050 feet of hose are used. No loss listed. (MJL/RFD) Note: Meredith College was previous located on the northwest corner of Edenton and Person.
701 E. Franklin	Watauga	Oct 31, 1971	Joseph E. Sanderford House (1s), c.1913	Same Seven apts	Garage	Engine 3 first due, dispatched -0407, arrived 0410, cleared 0506. Included E3, E1, T1. Loss \$1,400. Engine 3 returned for trash fire, dispatched 0822, arrived 0834, and cleared 0835. (MJL/RFD)
710 E. Franklin	Watauga	Dec. 28, 1965	Jarrett-Summers House (1s), ca. 1927	Same Single-fam	Garage destroyed	Garage of firefighter Oscar Summers, who responds on the truck company that answers the call. Garage is destroyed. (N&O, 12/28/65)

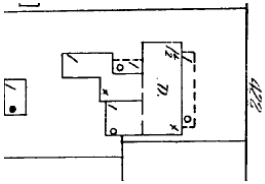
530 E. Jones		Apr 10, 1889	Andrew Syme House (2s), c.1874 Detached kitchen	Same Single-fam	Kitchen presumed destroyed	Reported about 8:30 a.m. from Box 14. Fire in kitchen of Mr. J. M. Brought on Jones Street. When firefighters arrived, fire had spread to main building, located about ten feet from kitchen. Damage to dwelling was slight. Presume kitchen destroyed. House owned by Andrew Syme. (N&O, 4/11/1889)
426 N. Person		Jan 3, 1877	Hoke-Broughton House (2s), 1872 Stable on property	Same Four apts		Reported at 11:00 p.m. Stable on premises of Dr. B. F. Arrington, now occupied by Dr. T. D. Martin. Fire destroyed stable, but "horse, carriage and harness" were saved. The former was "driven out by a policeman." Cause said "it is manifest that this fire was the work of an incendiary." (N&O, 1/4/1877)
311 Polk	Person	Aug 11, 1986	John Cox Winder Kitchen (1s), ca 1875 Built for and attached to Major John Cox Winder House (2s) c.1875 at 504 N. Person	Same Single-fam		E7 first due, dispatched 1422, arrived 1425, cleared 1631. Extended two 1.5-inch lines and one booster line. E13 laid supply line. Also T1, R7, C52. Caused by faulty wiring in window fan. (MJL/RFD)

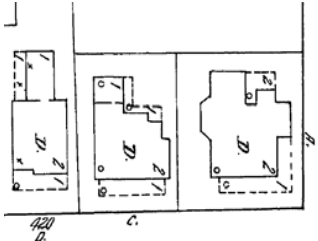
Unconfirmed Fires of Any Severity – Tier 5

Where dates or addresses are still being determined.

Address	Cross Street(s)	Building Then	Building Now	Building Then	Damage	Notes
115 N. Bloodworth	Edenton, Jones	Circa 1973 Need exact date	House (1s, 2s), built ? Sanborn, 1950: 	Jim & Sharon Bright House (1s), 1995 Single-Fam	Destroyed	
407 N. Bloodworth	Oakwood	Still looking	John H. Finlator House (2s), ca. 1922	Same Single-fam		

721 N. Bloodworth	Franklin	Circa 1950s (?)	John M. Sherwood house (1s), ca. 1887	Same Single-fam		House originally had a large pyramidal roof which was truncated when rebuilt after the fire. Charred timbers could be seen in the attic when the house was restored a few years ago. (KL)
318 N. Boundary	Bloodworth	Jun 5, 1989	Ellen Mordecai House (2s), ca 1874	Same Single-fam + apt		Engine 3 first due, dispatched 2233, arrived 2235, cleared 0032. Code 2 fire. Including E3, E7, T1, R7, SR1. House struck by lightning. (MJL/RFD)
109 N. East	Jones	Circa 2005	Young-Haywood House (2s), ca. 1909	Same Single-fam		No entries found in reading/skimming Engine 3 and Rescue 7 log books for 2005.
215 N. East	Jones	Still looking	Mebane-Stein House (1s), ca.1897	Same Single-fam		
530 N. East	Euclid	Still looking	Shore-Keil House (1s), ca. 1907	Same Single-fam		
517 Elm	Euclid	1970's	House (1s), built 1920s Sanborn, 1950: 	Empty lot	Destroyed	
550 E. Franklin		Nov 29, 1978	Invalid address.			Engine 3 first due, dispatched 1150, arrived 1152, cleared 1303. Code one, condition red. Fire in attic. Caused by short in wiring. Includes E3, E7, T7, R. (MJL/RFD)
628 E. Franklin	Watagua	Still looking	House (1s), built before 1957 Sanborn 1950, from 540 N. Person: 	St. Lovick-Sherman House (1s) ca. 1929 at 540 N. Person, moved to site 1957	Destroyed	

547 E. Jones	Linden	Still looking	Samuel M. Parish House (2s) c.1872	Same Single-fam		
523 E. Lane	Elm	Still looking	Friedlander-Iverson House (1s), c.1920	Same Single-fam		
601 E. Lane	Elm	Circa 1960 (?)	Ogden-Kline House (1s) c.1909	Same Single-fam		Visible charring still in structure. (MMB)
309 Linden	Oakwood	Still looking	Caroline G. Teachey House (2s) c.1925	Same Single-fam		
501 New Bern	East	Mid-1990s?	St. Luke's Home (2s), c.1923	Same Group home		Fire date source MMB. First thought circa 1995, but no entries in log books for that year.
410 Oakwood	East	Still looking	Patrick H. Hughes House (2s), c.1893	Same Single-fam		
418 N. Person Address 420 N. Blount at time of fire. Moved to this parcel in 1974.	Oakwood, Polk	1930s	Garland S. Tucker House (2s), c.1915 Sanborn, 1914: 	Empty lot	Moderate damage	One night in the 1930s, as the family slept in the upstairs bedrooms, fire broke out on the first floor. The people escaped without injury, but damage was severe in some downstairs rooms. The damage was repaired, however, and life went on. (MMB/interview with Garland Tucker)
530 N. Person	Pell	Circa 1984	Charlotte Montgomery Williamson House (2s), c.1898	Same Offices		Fire #2 of 2

404 Polk Street	Bloodworth, East	Early 1970s	<p>House (2s), built before 1970</p> <p>Sanborn 1914 shows likely one of these two-story buildings:</p> 	Empty lot	Demolished	House demolished after fire. (KL)
-----------------	------------------	-------------	---	-----------	------------	-----------------------------------

Other Information

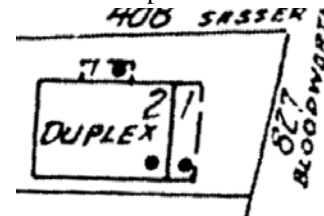
Notable Fires Not Inside Historic District

- A&P Food Store, 800 N. Person, February 22, 1966, “fire visible from fifteen blocks away.”
- IGA Grocery Store, 718 N. Person, Dec. 20, 1992. Three alarm fire.
- Krispy-Kreme, 549 N. Person, at least one working fire on May 15, 1994.
- Len Adams residence, 227 N. Edenton, October 16, 1884, three-story house, largest private residence in city said newspaper.
- Murphy Graded School, 423 N. Person, July 1, 1915, heavy damage.
- Shaw University, many blocks from district and site of many notable fires.

Nor This One

- 827 N. Bloodworth, which is outside the district by one parcel, because the property was demolished by the time of the application for district designation.
- Aug 19, 1984
- Then: House (2s), built by 1950
- Today: Oakwood Office Center (2s), 1985
- Major damage presumed, later demolished
- E3 first due, dispatched 2348, arrived 2351, cleared 0312. Working fire. (MJL/RFD)

- Sanborn Map 1950:



Firemen Who Lived in Historic District

- 522 N. Bloodworth – Lucius Q. Godwin, including 1940s, 1950s
- 701 N. Boundary - Oscar Summers, 1943, 1954
- 410 N. East - F. Laurel Blake, 1954
- 521 N. East - Charles A. Doan, 1954
- 532 N. East - Bernard C. Dowd, 1943
- 704 N. East - L. Grimes Stephenson, 1943
- 706 N. East – W. Ernest Holland, from circa 1925 (built) to 1960s
- 226 Elm - Robert B. Bland, 1954
- 512 E. Franklin – W. Ernest Holland, from 1914 to... ?
- 632 E. Franklin - Robert G. Wiggs, 1943
- 628 E. Franklin – Norman E. Conyers, including late 1950s and early 1960s
- 710 E. Franklin - Oscar Summers, 1963
- 711 E. Franklin - Roy R. High, 1963
- 408 New Bern – Willis Choplin, from circa 1920 (built) to 1950s
- 519 E. Jones - Thomas R. Gresham, 1954
- 536 E. Jones - R. Glenn Davis, 1933
- 536 ½ E. Jones - J. Roy King, 1943
- 511 Oakwood - George E. Pearce, 1943
- 307 Pace - John D. Grimes, 1933, 1943

Note: Single years listed above reflect City Directory entries.

Fire Chief's Stable Burns

News & Observer, June 23, 1881 – At 3:40 o'clock yesterday morning an alarm of fire was given, caused by the breaking out of flames in the stable of Mr. John Weir, chief of the fire department in the center of the square bounded by East, Morgan, Bloodworth and Hargett streets.

The stable was of wood, and contained five horses, some harness, vehicles, forage, etc. Four of the horses were taken out, but it was evident that one had been stolen before the building had been set on fire. One set of harness and the forage was burned.

The building, of wood, 40x20 feet, was valued at \$250, the harness, etc., at about \$100, while the stolen horse was valued at about \$150. The double tank chemical engine, drawn by the Rescue horses, made very quick time to the fire. No other building was burned saved the stable.

Comic Relief

Chicken house on E. Street burns. From the April 16, 1896 edition of the News & Observer: "At three o'clock yesterday afternoon there came an alarm of fire from box No. 12, corner of Polk and Person streets. People paused for a moment to watch the fire trucks rattle by, and then started about their business. They knew the ability of the home department and didn't worry. But then came in a second alarm. Someone looked over in the northeast section of the city and save hovering there a cloud of black smoke.

Then a rush commenced. Fire engines and hose reels went pelle melle through the streets. People rushed pantingly along the sidewalks; hackmen hit their galloping horses viciously in their haste. Everybody went to the fire on foot, on horseback, in carriages, street cars, and on bicycles. Another alarm came in; excitement naturally increased. But the alarm was about all there was to the fire. At the house of Mr. W. S. Barnes on East Street, a chicken house was utterly consumed. A lady hen received a severe shock to her nervous system, and had her unhatched brood prematurely fried. (April 15, 1896)

Smaller Fires

There have been many smaller fires in historic Oakwood. They include:

- 6 N. Bloodworth - 8/16/07 - Grease fire, largely out on arrival.
- 117 N. Bloodworth – 8/21/92 – Mattress fire.
- 123 N. Bloodworth - 1/12/73 - 2111, 2112, 2149. Loss \$408.92.
- 216 N. Bloodworth – 11/23/92 – 1501, 1502, 1513 – Pot on stove.
- 534 N. East - 5/8/71 - 1055, 1057, 1132 – Electrical short, minor damage - \$25 loss.
- 703 N. East - 2/14/60 - 5:29 p.m. - \$75 loss.
- 300 E. Edenton - 10/18/70 - 10:02 p.m. –Watkins Grill - Deep fat fryer.
- 329 E. Edenton - 5/9/60 - Mattress fire - \$25 loss.
- 404 E. Edenton – 1/10/77 – 0029, 0030, 0056 – Mattress in upstairs apartment.
- 223 Elm - 7/18/60 - Living room - 3:45 p.m. - \$200 loss.
- 417 Elm - 9/6/71 - 1102, 1105, 1129 - Minor damage - \$10 loss.
- 522 Elm - 8/22/84 - 0230, 233, 352 - Smoke investigation, remove smoke from residence.
- 605 Elm - 3/29/60 - 1:22 p.m. - Couch on fire.
- 605 ½ Elm – 9/4/70 – 0450 – 0455 – 0520 – Smoking in bed.
- 305 Jones - 7/28/60 - Heater in meat case.
- 315 E. Jones - 1/4/1918 – Floor in front of a goal grate. Minor damage.
- 542 E. Jones - Sunday before 3/30/1886 – Roof, slight damage.
- 405 E. Morgan - 4/11/72 - 446, 447, 519 - Two story - Fire in light fixture - \$400 loss.
- 501 New Bern – 12/11/08 – 0432, 0434, 0531 – Paper and curtains burned in bathroom.
- 511 Oakwood - 12/1/72 - 927, 928, 945 - Pot on stove - \$200 loss.
- 602 Oakwood - 4/1/71 - 1204, 1206, 1222 - Pot on stove - \$25 loss.
- 112 N. Person - 5/9/60 - 9:49 a.m. - Living room fire - \$410.00 loss.
- 118 N. Person - 1/30/72 - 530, 531, 558 - Floor around heater - \$250 loss.
- 118 N. Person - 5/21/84 - 2001, 2003, 2015 - Mattress in “derelict building.”
- 222 N. Person – 8/5/13 – 0913, 0917, 1137 – Small fire in hallway.
- 222 N. Person – 8/15/13 – E3 dispatched 1309 – Small smoldering fire in office.
- 516 N. Person – 4/15/72 – 0325, 0327, 0341 – Mattress.
- 501 Polk - 11/22/71 - 343, 345, 358 - Room fire - \$50 loss.
- Bloodworth and Polk, resident of W. C. Douglass – 1/18/1900 – Roof, quickly extinguished.
- N. Person near North – Monday before 6/4/1884 – Explosion of kerosene lamp, one child fatally burned.

Sources

Abbreviated above:

- MJL - Mike Legeros
- MJL/RFD - Mike Legeros using Raleigh Fire Department information
- MJL/PU - Mike Legeros using Raleigh Fire Department Photo Unit information
- MJL/LW - Mike Legeros using Lee Wilson notes
- MMB - Matthew Brown, Oakwood historian
- N&O - News & Observer
- RFD/FRWS – Raleigh Fire Department [fire report web site](#).
- RT - Raleigh Times.

Other sources include:

- Historic Oakwood web site
- National Register of Historic Places submission forms
- Oral histories
- Raleigh City Directories
- Sanborn Fire Insurance Maps
- Wake County Real Estate Records
- WRAL.

Index of Fires

Not including the smaller fires listed above. Check both lists!

- | | | |
|---|---|--|
| • 100 N. Bloodw. - Jul 5, 2001 - Tier 1 | • 721 N. Bloodw. - Circa 1950s (?) - Tier 5 | • 109 N. East - Circa 2005 - Tier 5 |
| • 115 N. Bloodw. - Circa 1973 - Tier 5 | • 800 N. Bloodw. - Dec. 21, 2008 - Tier 2 | • 112 N. East - Sep 12, 1915 - Tier 4 |
| • 120 N. Bloodw. - Jan. 10 1978 - Tier 1 | • 809 N. Bloodw. - Jun 30, 1996 - Tier 3 | • 116 N. East - Oct 12, 1972 - Tier 3 |
| • 216 N. Bloodw. - Dec 10, 1993 - Tier 3 | • 117 S. Bloodw. - Dec. 2, 1890 - Tier 3 | • 116 N. East - May 12, 1988 - Tier 3 |
| • 222 N. Bloodw. - Feb. 12, 1957 - Tier 3 | • 127 S. Bloodw. - Apr 10, 1992 - Tier 1 | • 215 N. East - Still looking - Tier 5 |
| • 307 N. Bloodw. - Jan 1, 1994 - Tier 3 | • 318 N. Boundary - Jun 5, 1989 - Tier 5 | • 405 N. East - Jan 10, 2010 - Tier 3 |
| • 407 N. Bloodw. - Still looking - Tier 5 | • 600 N. Boundary - Oct 17, 1985 - Tier 4 | • 521 N. East - Jun 27, 1904 - Tier 1 |
| • 517 N. Bloodw. - Apr 9, 1977 - Tier 3 | • 10 N. East - Nov 26, 1987 - Tier 3 | • 530 N. East - Still looking - Tier 5 |
| • 601 N. Bloodw. - Jan 19, 1893 - Tier 4 | • 16 N. East - Dec 23, 1993 - Tier 3 | • 533 N. East - May 29, 2000 - Tier 3 |

- 534 N. East - Sep 22, 1959 - Tier 3
- 307 E. Edenton - Jan 3, 1927 - Tier 2
- 403 E. Edenton - July 23, 1978 - Tier 1
- 216 Elm - Mar 31, 1994 - Tier 3
- 223 Elm - Oct. 24, 1941 - Tier 4
- 229 Elm - Dec 10, 1983 - Tier 3
- 306 Elm - Feb 5, 1991 - Tier 3
- 416 Elm - Nov. 10, 1908 - Tier 3
- 517 Elm - 1970's - Tier 5
- 605 ½ Elm - Aug 26, 1971 - Tier 3
- 605 ½ Elm - Nov 15, 1971 - Tier 3
- 500 E. Franklin - March 6, 1992 - Tier 1
- 550 E. Franklin - Nov 29, 1978 - Tier 5
- 628 E. Franklin - Still looking - Tier 5
- 701 E. Franklin - Oct 31, 1971 - Tier 4
- 704 E. Franklin - October 10, 2011 - Tier 3
- 710 E. Franklin - Dec. 28, 1965 - Tier 4
- 304 E. Jones - Mar 23, 1973 - Tier 3
- 312 E. Jones - Mar 13, 1896 - Tier 3
- 315 E. Jones - July 23, 1976 - Tier 3
- 516 Jones - April 18, 2012 - Tier 2
- 530 E. Jones - Apr 10, 1889 - Tier 4
- 537 E. Jones - Apr 29, 1982 - Tier 1
- 547 E. Jones - Still looking - Tier 5
- 404 ½ E. Lane - Oct 18, 1977 - Tier 3
- 501 E. Lane - Jul 22, 1972 - Tier 3
- 523 E. Lane - Still looking - Tier 5
- 601 E. Lane - Circa 1960 (?) - Tier 5
- 609 E. Lane - Jul 9, 1986 - Tier 3
- 202 Linden - Sep 16, 1970 - Tier 3
- 202 ½ Linden - Jul 18, 1974 - Tier 3
- 202 Linden - Mar. 20, 1984 - Tier 3
- 216 ½ Linden - Dec 28, 1984 - Tier 3
- 218 Linden - Jan 17, 1931 - Tier 3
- 309 Linden - Still looking - Tier 5
- 312 Linden - Dec. 21, 1979 - Tier 2
- 416 E. Morgan - Jan 16, 1977 - Tier 3
- 405, 407 New Bern - Jun 20, 1993 - Tier 3
- 408 New Bern - Oct 19, 1970 - Tier 3
- 415 New Bern - Jan 28, 1988 - Tier 3
- 501 New Bern - Mid-1990s? - Tier 5
- 315 Oakwood - Feb 18, 1977 - Tier 3
- 410 Oakwood - Still looking - Tier 5
- 501 Oakwood - Nov 3, 1999 - Tier 1
- 515 Oakwood - Oct 12, 1991 - Tier 3
- 216 N. Person - Sep 12, 1988 - Tier 3
- 312 N. Person - Jun 23, 1890 - Tier 2
- 418 N. Person - 1930s - Tier 5
- 426 N. Person - Jan 3, 1877 - Tier 4
- 530 N. Person - April 12, 1942 - Tier 2
- 530 N. Person - Circa 1984 - Tier 5
- 618 N. Person - October 11, 2007 - Tier 3
- 311 Polk - Aug 11, 1986 - Tier 4
- 325 Polk St. - Jan. 27, 1985 - Tier 3
- 404 Polk St - Apr 4, 1943 - Tier 2
- 404 Polk Street - Early 1970s - Tier 5
- 407 Polk Street - Feb. 18, 1958 - Tier 2
- 502 Polk - Sep 30, 1972 - Tier 3
- 608 Polk Street - Apr 19, 1909 - Tier 3
- 614 Polk - Jun 6, 1961 - Tier 3
- 625 Polk - Apr 2, 1939 - Tier 2.