



History of Fire Station 3

Presented by Mike Legeros



The Timeline

City of Raleigh
Created
1792

Volunteer RFD
created
1852

Career RFD
created
1912

New Station 3
opened
1951

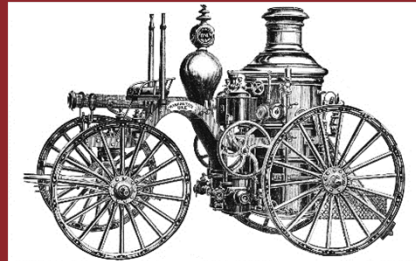
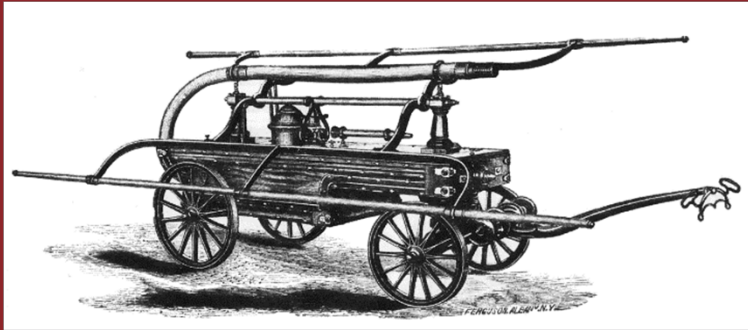
First fire engine,
First volunteer
fire company
1819

First Station 3
opened
1913

New Station 3
construction
2024



Volunteer Era



Members Exempt from State, County and City Poll Tax, Jury and Militia Duty. Seven Years Active Service Exempts for life Jury and Militia Duty.

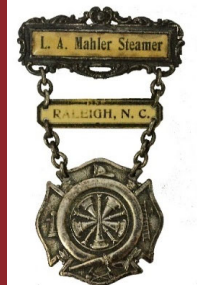
RESCUE STEAM FIRE ENGINE CO No. 1.

RALEIGH, N. C.,-----19----

SIR:—You are hereby notified that you were elected a member of this Company,----- 19----, and are entitled to all benefits of same. The Company meets in regular session the first Monday evening of each month. You are expected to attend all meetings and fires when possible.

Recording Secretary.

Article 7, Section 1. Dues shall be TEN CENTS per month, payable monthly. Sec. 2. The name of any member whose dues are SIX months in arrears shall be dropped from the roll of the Company. If injured while in service, entitled to \$2 per day. Burial Benefit of \$30.





Volunteer Era

REPORT OF CHIEF FIRE DEPARTMENT.

FIRE DEPARTMENT HEADQUARTERS,
RALEIGH, N. C., March 1, 1891.

*To the Honorable the Mayor and the Committee on
Fire Department of the City of Raleigh.*

GENTLEMEN:—In compliance with Chapter 5, Section 5, I herewith respectfully submit for your consideration my third annual report of the department under my charge for the fiscal year ending February 28th, 1891:

ORGANIZATION OF FIRE DEPARTMENT.

COMMITTEE ON FIRE DEPARTMENT.

W. R. WOMBLE, Chairman. G. E. LEACH.
Mayor A. A. THOMPSON. H. W. JACKSON.
W. W. PARISH.

CHIEF.

E. B. ENGELHARD.

ASSISTANT CHIEF.

J. R. FERRALL.

SUPERINTENDENT FIRE-ALARM TELEGRAPH.

E. B. ENGELHARD.

COMPANY OFFICERS.

HOOK AND LADDER COMPANY.

W. A. WYNN, Foreman. MILKS GOODWIN, Assistant Foreman.
W. W. PARISH, Secretary.

RESCUE STEAM FIRE-ENGINE COMPANY.

R. E. LUMSDEN, Foreman. JOHN S. RIDDLE, Assistant Foreman.
W. A. FAUCETT, Secretary.

CAPITAL HOSE COMPANY.

W. WOOLCOTT, Foreman. L. A. MAHLER, Assistant Foreman.
F. WOOLCOTT, Secretary.

VICTOR ENGINE COMPANY.

S. J. HAWKINS, Jr., Foreman. T. B. BURGESS, Assistant Foreman.
S. P. MALLETT, Secretary.

BUCKET AND LADDER COMPANY.

W. P. SNOW, Foreman. THEO. HENLY, Assistant Foreman.
FRANK MILLIGAN, Secretary.

WORKING FORCE OF DEPARTMENT.

RESCUE CO., No. 1—Membership.....	33
WOMBLE HOOK AND LADDER, No. 1—Membership, ..	18
CAPITAL HOSE, No. 3—Membership.....	19
VICTOR CO., No. 2—Membership.....	33
BUCKET AND LADDER CO., No. 1—Membership... ..	20
Total	123

LOCATION OF COMPANIES.

RESCUE CO., Fayetteville street; Court-house Square.
WOMBLE HOOK AND LADDER CO., West Morgan street,
between Salisbury and McDowell streets.

CAPITAL HOSE, West Morgan street, between Salisbury
and McDowell streets.

VICTOR CO., corner Salisbury and Davie streets.

BUCKET AND LADDER CO., South Wilmington street,
east end of Market-house.

EQUIPMENT OF DEPARTMENT.

One wagon, horse, drop harness, &c., for Chief, (personal
property).

RESCUE CO.—One one horse four-wheeled wagon; one
two-horse four-wheeled reel; three horses; 1,500 feet hose;
one Gould Steamer (Rescue).

WOMBLE HOOK AND LADDER CO.—One two-horse steel-
frame city-service truck, thoroughly equipped; two horses;
215 feet ladders and thirty-five feet pompier ladders.

CAPITAL HOSE.—One two-horse four-wheeled wagon;
two horses; 1,000 feet hose.

VICTOR CO.—One two-wheeled hand-reel; 650 feet of
hose; one Rumsey hand-engine (reserve).

BUCKET AND LADDER CO.—One four-wheeled truck;
buckets, 18; fifty feet of ladders.

RESERVE FORCE.—One Gould Steamer; one hand-
engine; two hand-reels; 750 feet of hose.

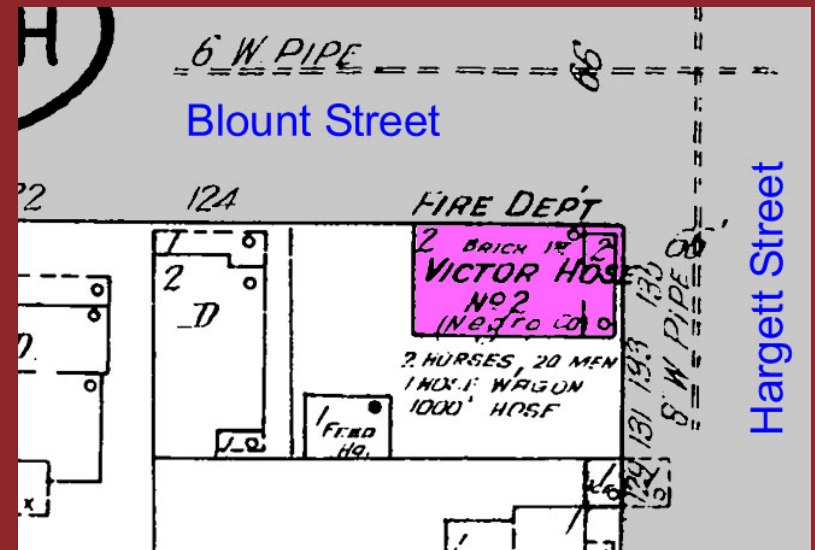
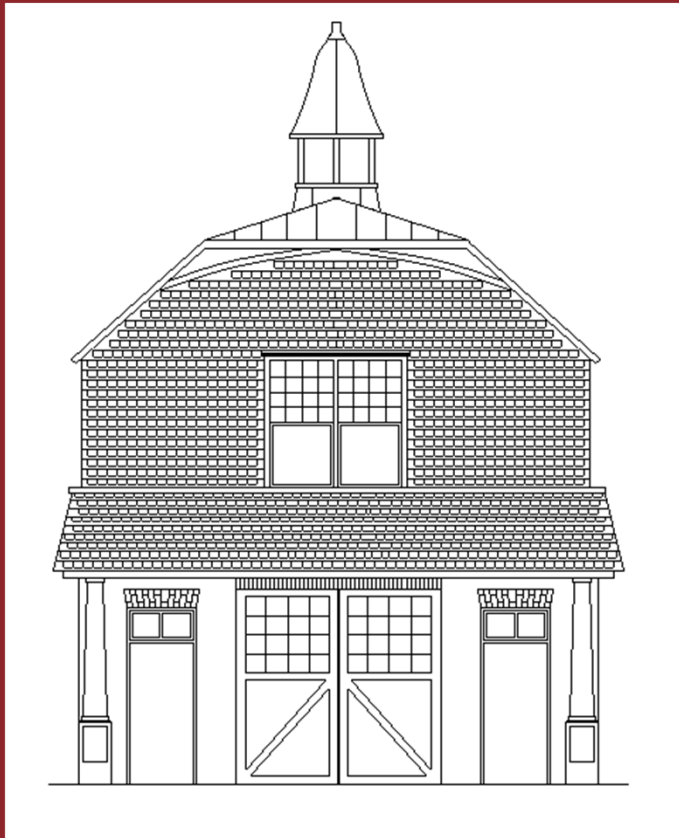
1891 Annual Report

Five vol. fire companies

123 volunteer firefighters



1898



New engine house for
Victor Fire Company



1912

RALEIGH WILL HAVE A PAID DEPARTMENT

First Class Fire-Fighting Apparatus to Cost
Less Than \$35,000 Will Be Installed By
Capital City at Early Date

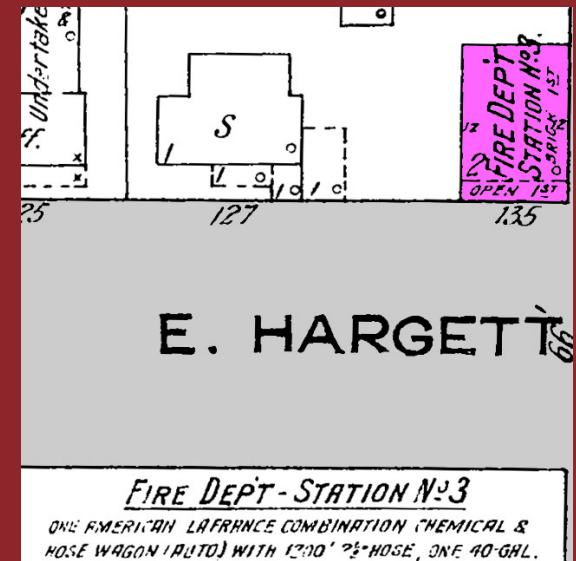


Full-time, full-paid fire department created

← Photo from 1913



1913



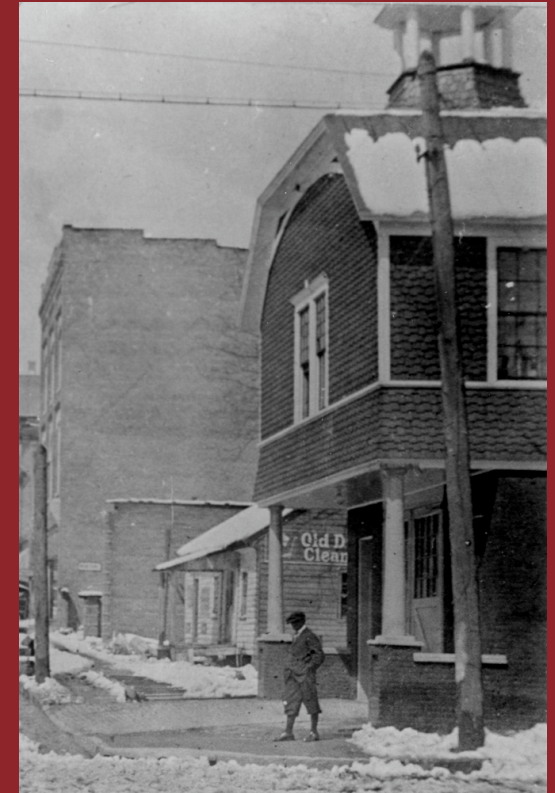
Original Station 3
opened



Station 3 on Hargett Street



Very few surviving photos





1917 - 1919

CITY DISCONTINUES ONE FIRE STATION

Company No. 3 Transferred To Headquarters House On West Morgan Street

Station No. 3 of the Raleigh fire department, which was located on the northwest corner of Hargett and Blount streets, has been discontinued and Company No. 3 has been transferred to the headquarters station on West Morgan street. The department now has only two fire stations, at headquarters where truck companies Nos. 1 and 3 and aerial company are located, and at the station on South Salisbury street where truck company No. 2 is located.

The consolidation of truck companies Nos. 1 and 3 in one station means an expense saving to the city of about \$2,500 a year and at the same time keeps three truck companies in the fire district as required by fire insurance underwriters. It also places company No. 3 in a position to respond to alarms without crossing main streets in the center of the business district.

In order to accommodate the firemen of company No. 3, the headquarters station is being repaired and enlarged.

NEW FIRE STATION IN EAST SECTION

City Sells Old Victor House For \$7,500; New Place Will Be On Martin Street

The city yesterday sold its old Victor fire house at the intersection of Hargett and Blount streets and will immediately erect a new fire house on East Martin street. The Victor property brought \$7,500. It was bought by the Interstate Motor Equipment Company, a new Raleigh enterprise.

In the erection of a new fire station on East Martin street, the city is granting a request from many property owners in that part of Raleigh. Since the

NEW FIRE STATION TO BE ON BUNGALOW STYLE

Truck Company Located in Old "Victor" House Until New Building Is Completed

The new truck station of the Raleigh Fire Department, to be located on East Martin street, will be a handsome building and will cost about \$3,500. Plans show that the station will be bungalow style with a large front. There will be five bedrooms, bath and truck space. It will be a one-story building.

Until the new building is completed about three months from now, Commissioner Mooneyham has decided to locate the Eastern Station in the old "Victor" house at the intersection of Hargett and Blount streets. One of the truck companies from the Central Station will be transferred at once to the "Victor" house.

The location of one company in the

ABANDON PLANS FOR NEW STATION

City Will Use Old Victor Fire Station Instead of Proposed New One

The plans for the establishment of a new fire station in the Eastern section of the city on Martin street have been abandoned for the present owing to the expensiveness of the proposed building. It will cost \$7,100 to build the new station and the city has not the means of donating such a sum when money is needed badly for other causes. When plans were formulated for a

Station 3 closed for two years



1919





Station 3 on East Street

New Station 3 opened
July 26, 1951

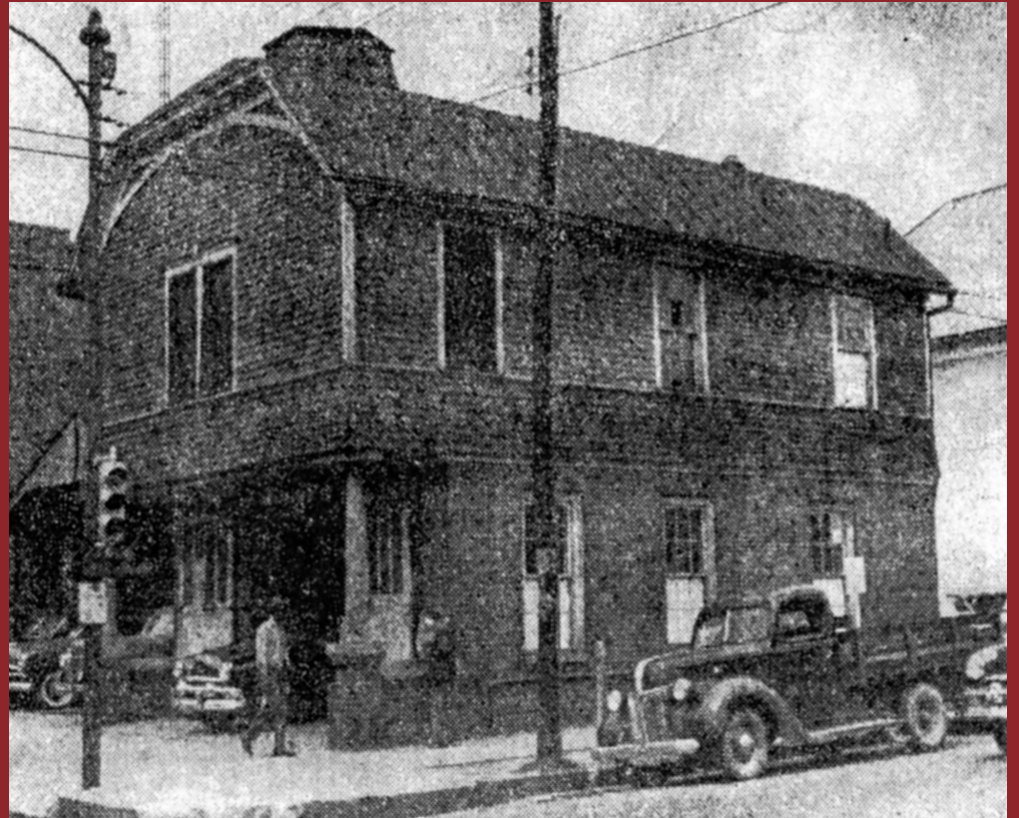




Old Station 3

Old Station 3 leased to
Carolina Motor Sales

Demolished spring 1952





Over the Years



Engine 3

Rescue Co. (1976-78)

Brush Truck (1983-85)

Mini Pumper (1986-201_)



By The Numbers

Year	E1	E2	E3	E4	E5	E6	E7	E8	E9	E10	E11	E12	E13	E14	E15	E16	E17	E18	E19	E20
1991	802	657	1,806	515	1,403	536	797	510	800	455	695	699	781	547	628	453	441	424	419	275
1992																				
1993	993	797	1,803	493	1,465	656	1,432	631	998	481	974	725	1,035	671	809	565	395	433	531	393
1994																				
1995	1,150	864	2,278	614	1,832	788	1,538	823	1,246	571	1,414	1,198	1,224	981	929	717	668	441	810	674
1996	1,303	879	2,307	626	1,898	922	1,619	1,050	1,386	632	1,605	1,224	1,417	1,036	1,087	877	780	535	993	741
1997	1,410	988	2,173	698	1,857	850	1,617	1,060	1,300	712	1,539	1,291	1,587	1,058	1,178	786	900	547	1,109	700
1998	1,509	1,071	2,313	714	2,084	1,102	1,824	1,060	1,442	795	1,616	1,380	1,880	1,263	1,236	996	1,047	634	1,170	668
1999	1,635	1,263	2,383	770	2,224	1,206	2,077	1,089	1,656	809	1,686	1,456	1,768	1,505	1,341	1,130	1,130	726	1,089	726
2000	1,548	1,242	2,236	953	2,065	1,150	1,901	1,182	1,458	905	1,746	1,516	1,978	1,562	1,385	1,046	1,046	761	1,153	785
2001	1,622	1,414	2,489	926	2,161	1,287	1,799	1,286	1,724	939	1,652	1,683	1,956	1,546	1,543	1,091	931	728	1,295	893
2002	1,477	1,329	2,312	998	2,272	1,432	1,832	1,337	1,870	1,005	1,774	1,897	1,781	1,686	1,601	1,095	1,031	807	1,303	964
2003	1,675	1,438	2,379	836	2,095	1,172	2,002	1,423	1,707	1,014	1,818	1,982	1,726	1,648	1,671	1,199	1,031	833	1,580	868
2004	2,243	1,450	2,311	1,261	1,711	1,344	1,789	1,589	1,478	1,186	2,268	2,116	1,624	1,302	2,057	1,590	1,197	903	1,856	859
2005	2,245	1,481	2,433	1,208	1,732	1,443	1,707	1,742	1,527	1,234	2,206	2,227	1,607	1,382	2,101	1,716	1,097	958	2,025	1,185
2006	2,329	1,415	2,578	1,143	1,669	1,323	1,968	1,918	1,489	1,187	2,013	2,178	1,603	1,360	2,259	1,622	1,108	919	2,089	1,097
2007	2,259	1,389	2,664	1,247	1,732	1,523	2,000	1,939	1,583	1,279	2,276	2,622	1,731	1,607	2,095	1,835	1,284	1,074	2,022	1,299
2008	2,271	1,477	2,661	1,099	1,326	1,350	1,790	1,777	1,463	1,225	1,933	2,547	1,348	1,482	1,798	1,706	1,061	1,054	1,787	1,372
2009	2,287	1,394	2,682	1,133	1,306	1,238	1,771	1,677	1,482	1,391	1,962	2,508	1,198	1,347	1,835	1,594	1,124	999	1,723	1,297
2010	2,171	1,487	2,438	1,121	1,281	1,314	1,897	1,664	1,566	1,443	2,081	2,527	1,216	1,506	1,943	1,751	1,213	1,100	1,865	1,317
2011	2,018	1,440	2,574	1,137	1,454	1,302	1,871	1,764	1,504	1,418	2,213	2,442	1,240	1,454	1,919	1,706	1,178	1,087	1,901	1,299
2012	2,151	1,493	2,547	1,142	1,412	1,250	1,844	1,774	1,544	1,379	2,096	2,433	1,405	1,475	1,967	1,590	1,178	1,129	1,951	1,368
2013	1,922	1,740	2,684	1,160	1,291	1,228	2,027	1,981	1,484	1,586	2,129	2,412	1,388	1,760	2,436	1,628	1,234	1,065	2,075	1,396
2014	1,842	1,717	2,696	1,234	1,261	1,228	1,935	1,861	1,529	1,636	2,303	2,391	1,337	1,639	2,334	1,664	1,309	1,117	2,101	1,536
2015	1,974	1,720	2,696	1,212	1,297	1,200	2,163	1,944	1,547	1,740	2,462	2,608	1,355	1,560	2,380	1,697	1,312	1,114	2,239	1,591
2016	2,026	1,860	2,718	1,348	1,057	1,320	2,079	2,093	1,598	1,778	2,481	2,565	1,449	1,611	2,343	1,743	1,294	1,125	2,290	1,695
2017	2,017	1,686	2,695	1,262	1,287	989	2,160	1,993	1,656	1,538	2,535	2,542	1,298	1,714	2,429	1,886	1,315	1,154	2,414	1,605
2018	1,983	1,830	2,668	1,249	1,305	882	2,400	2,070	1,834	1,689	2,735	2,622	1,431	1,600	2,539	1,963	1,345	1,178	2,556	1,713
2019	1,849	2,248	2,604	1,404	1,358	1,198	2,472	2,233	2,234	1,902	2,159	2,517	1,681	1,875	2,706	1,998	1,369	1,202	2,793	1,709
2020	1,393	2,084	2,403	1,245	1,003	991	2,697	1,918	1,761	1,866	2,691	2,499	1,374	1,688	2,273	2,035	1,396	1,180	2,490	1,765
2021	1,728	2,162	2,508	1,385	1,358	1,235	2,900	2,231	1,871	1,968	2,955	2,812	1,726	1,838	2,599	2,214	1,560	1,407	2,974	1,972
2022	1,945	2,494	2,943	1,500	1,615	1,505	3,014	2,114	2,088	1,970	3,006	3,037	1,956	2,069	3,017	2,515	1,588	1,494	3,181	2,037



February 28, 2021



Victor Company honored



Public Art at New Station 3





Public Art at New Station 3



Artist Maxwell Emcays



The End